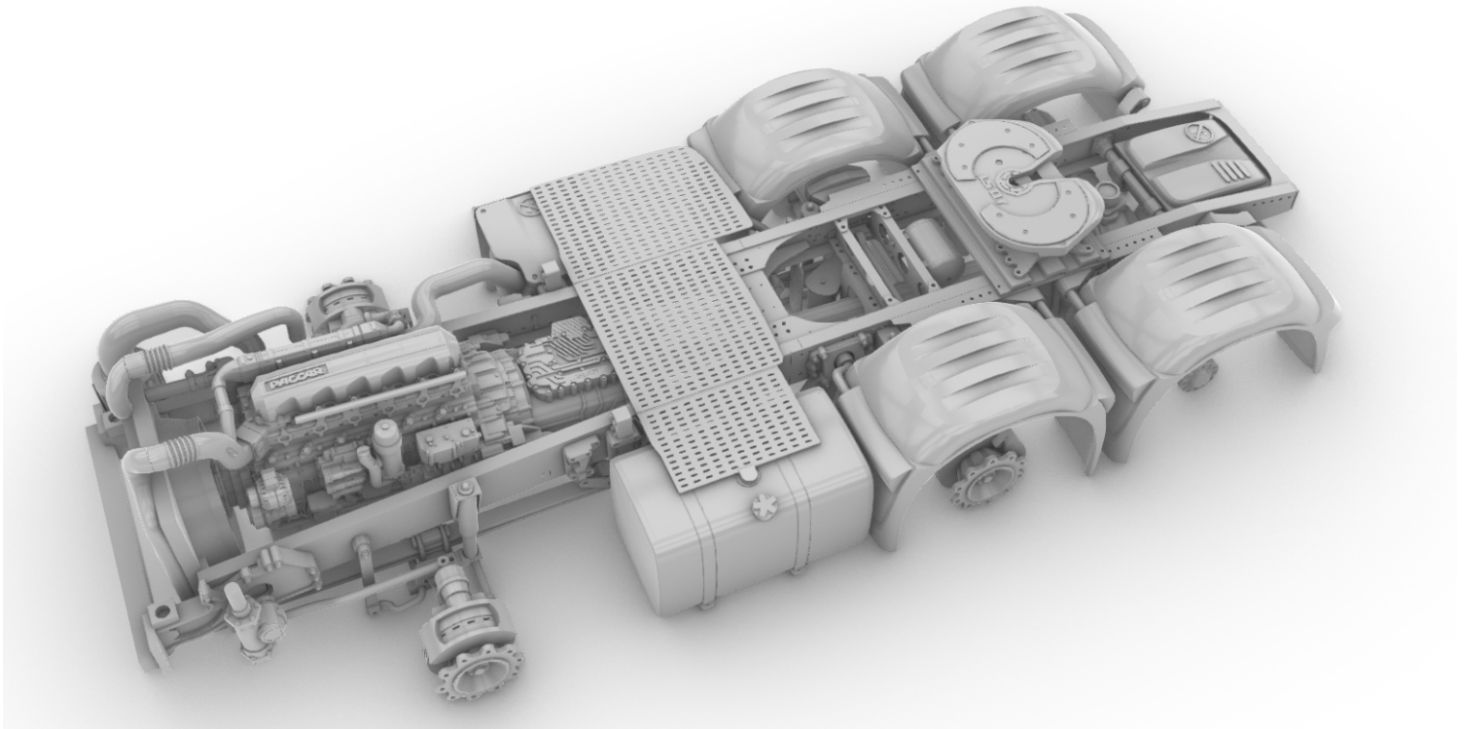


A&N Model Trucks



Dutch truck XG+ 6x4 chassis (FTT)

Multimedia kit, 1/24

Warning!

Read carefully this instruction and please follow it during assembling, otherwise you could face problems with assembling the model.


Photo-etched parts have sharp edges, please be careful.

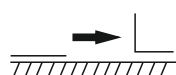
This model kit contains very small parts and is not suitable for children. THIS IS NOT A TOY!

We suggest to solder photo-etched frames. Check how-to videos on our [YouTube channel](#).

Symbols:

 - glue parts;


 - do not glue parts;

 - bend parts;

 - attention;

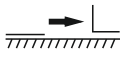
 - moving parts;

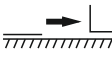
 - your choice;

 - cut;

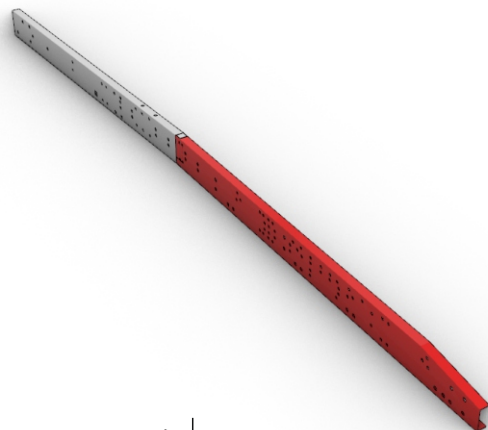
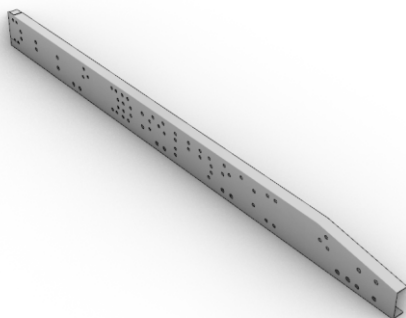
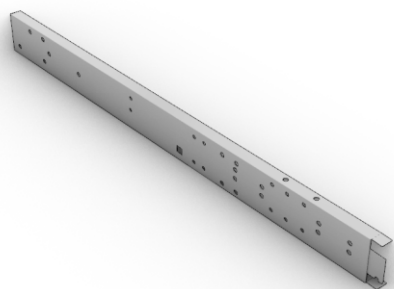
 - drill;


Dutch truck XG+ 6x4 chassis (FTT). Scale 1/24

1. 
PE-part #1


2. 
PE-part #2

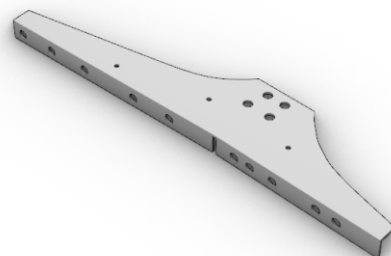
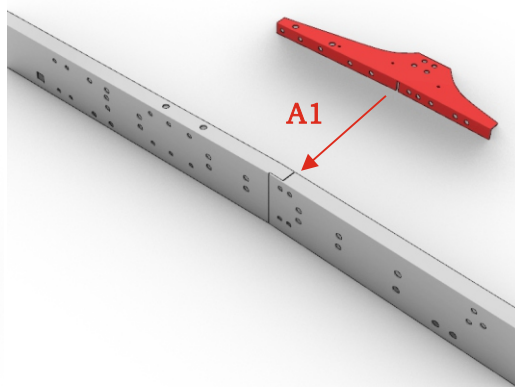
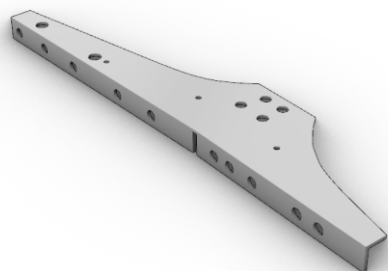
3. 



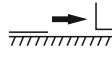
4. 
PE-part #7

5. 

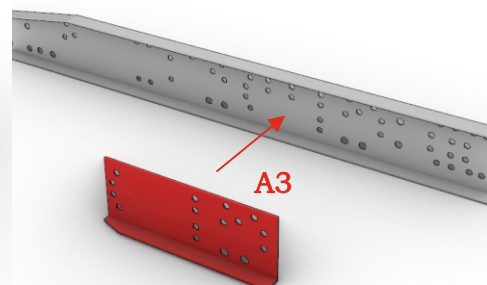
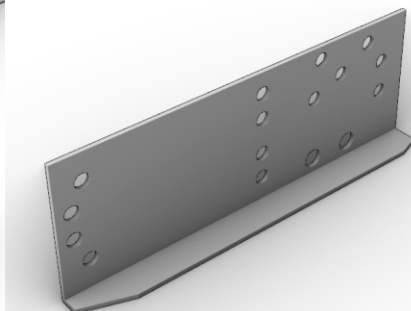
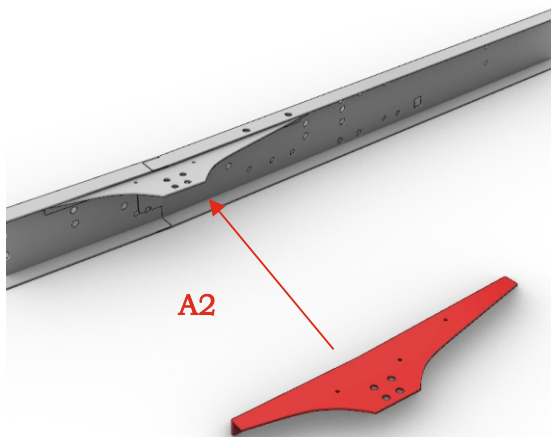
6. 
PE-part #9



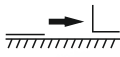
7. 

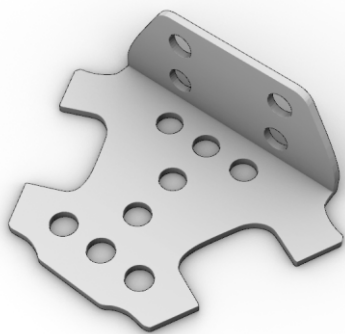
8. 
PE-part #11

9. 

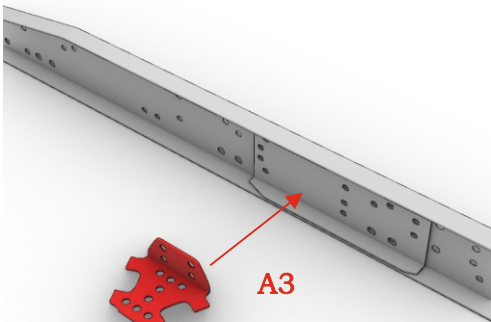


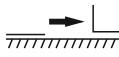
Dutch truck XG+ 6x4 chassis (FTT). Scale 1/24

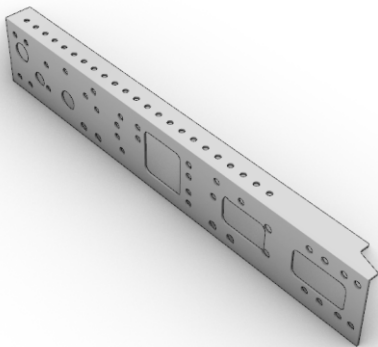
10. 
PE-part #14



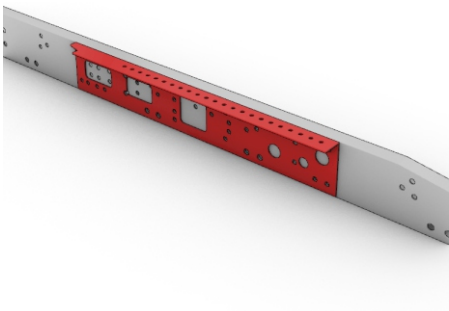
11. 

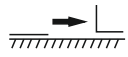


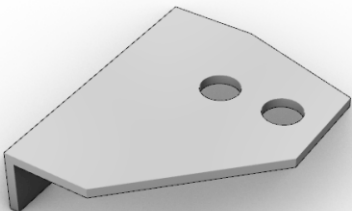
12. 
PE-part #5



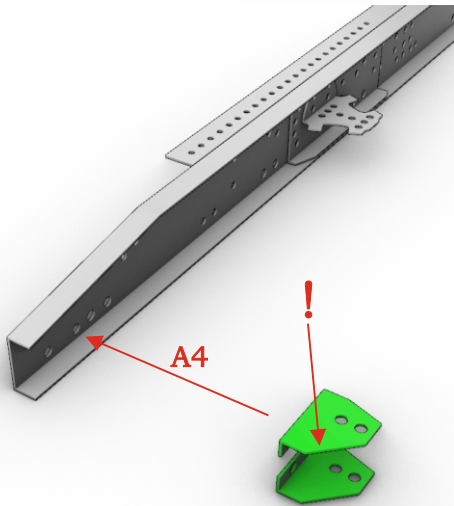
13. 

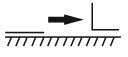


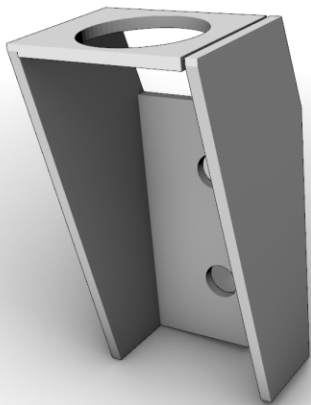
14.  x2
PE-part #21



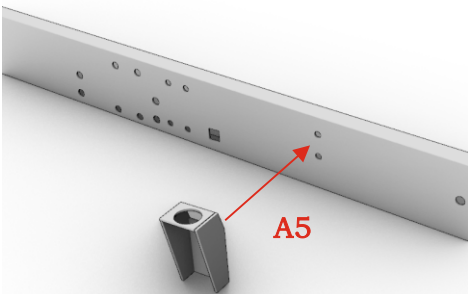
15. 



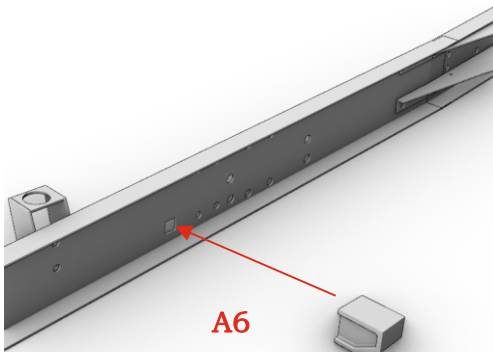
16. 
PE-part #17



17. 



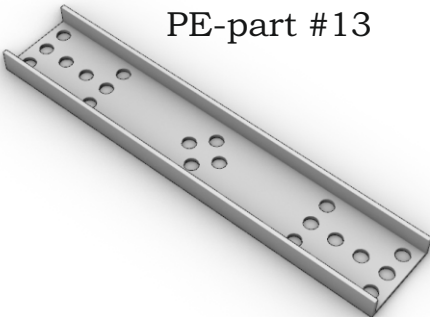
18. 



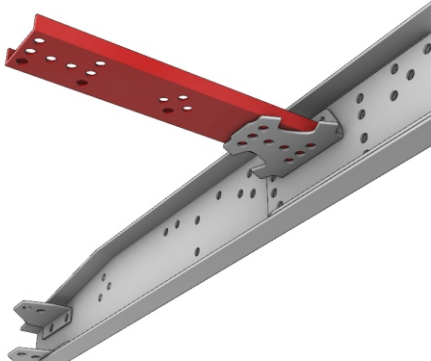
19.

Repeat steps 1-18 for right side.


20.  x2



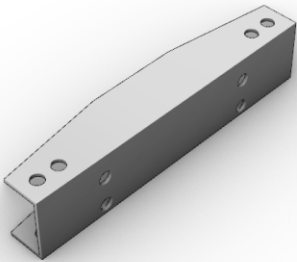
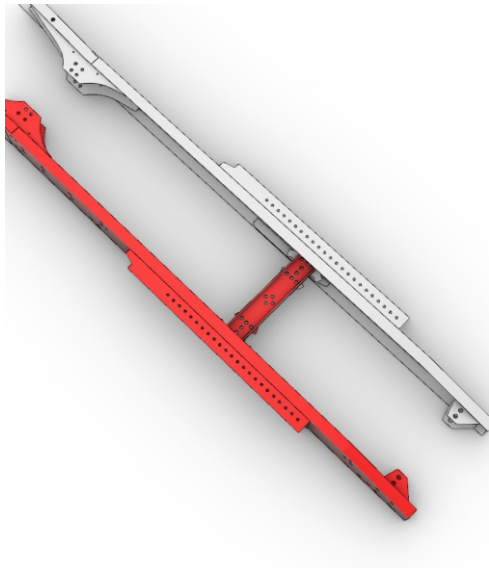
21. 

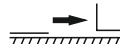


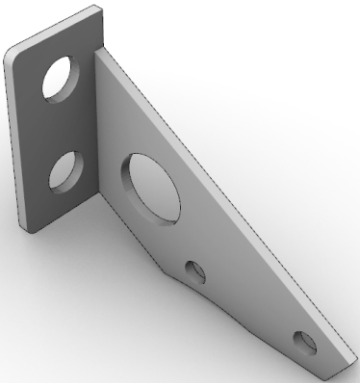
22. 

23. 

PE-part #20

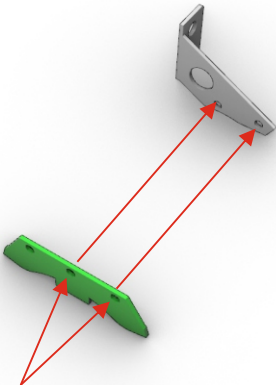


24.  x2




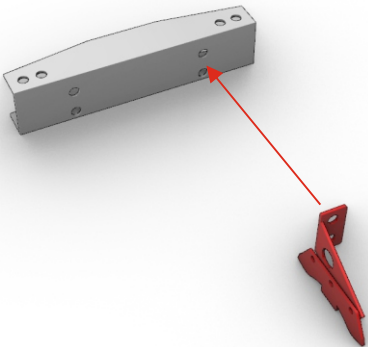
PE-part #30

25. 

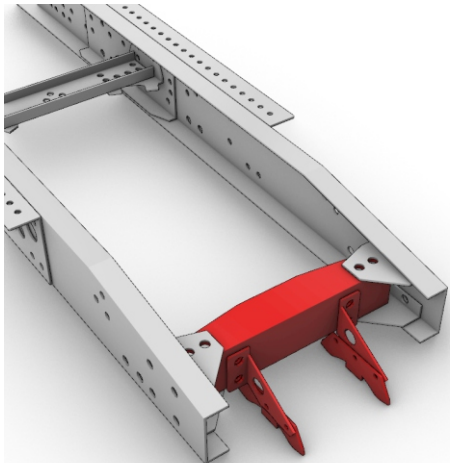



bolt 0.5

26. 
x2

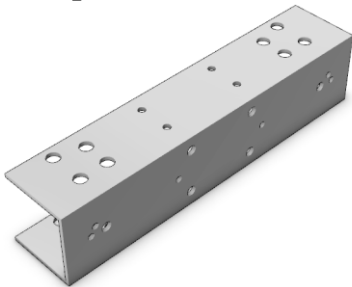


27. 

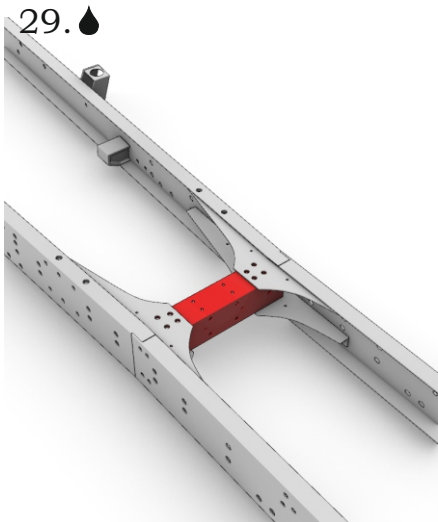


28. 

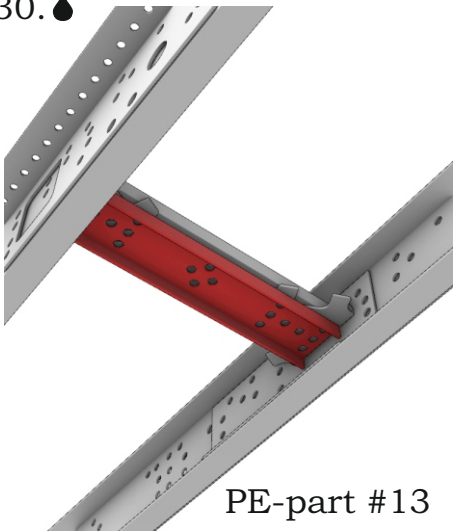
PE-part #15



29. 



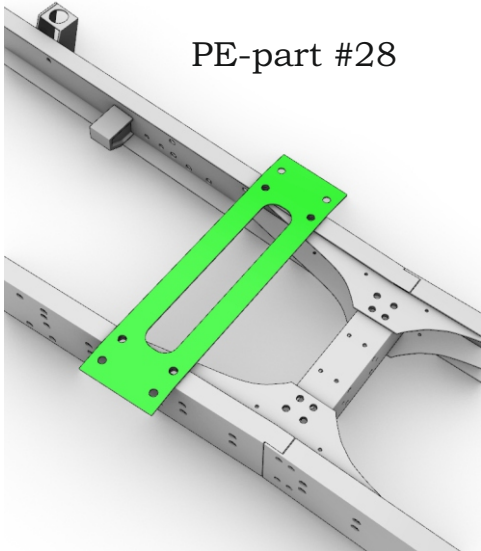
30. 



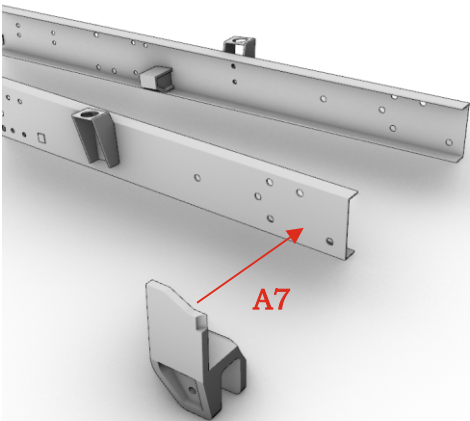
PE-part #13

31. 

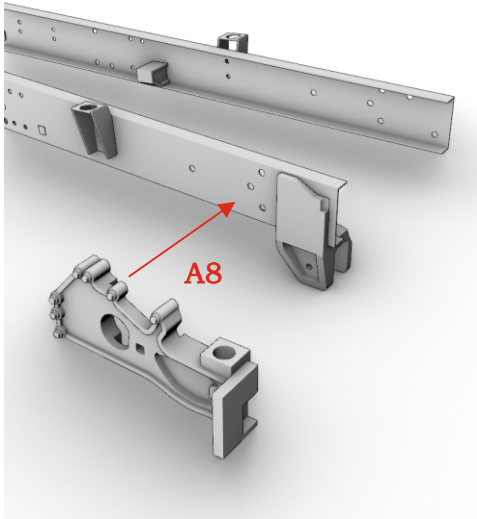
PE-part #28



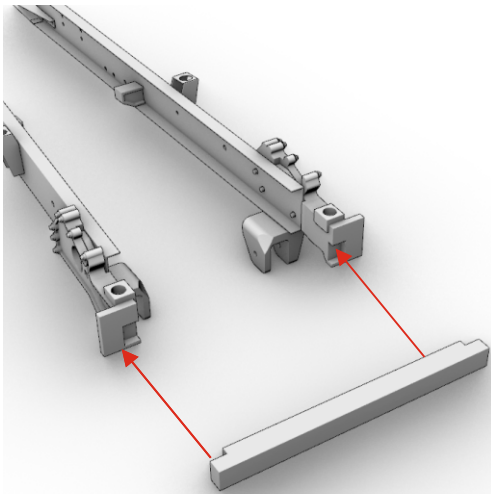
32.  x2




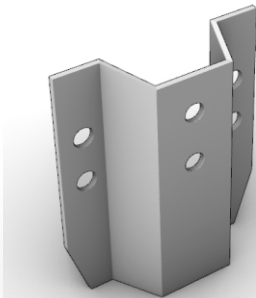
33.  x2



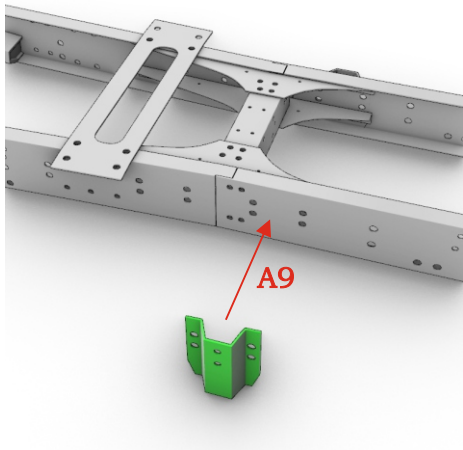
34. 




35.  x2
PE-part #18

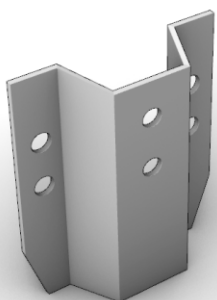


36.  x2

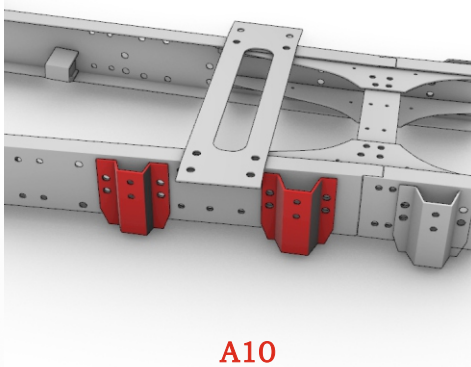



Dutch truck XG+ 6x4 chassis (FTT). Scale 1/24

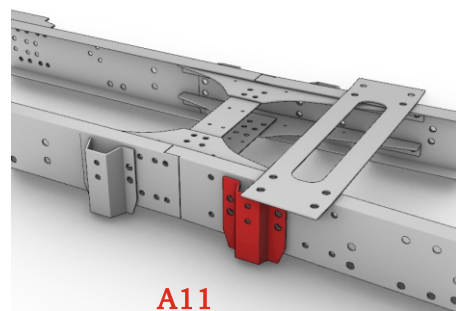
37.  x3
PE-part #19



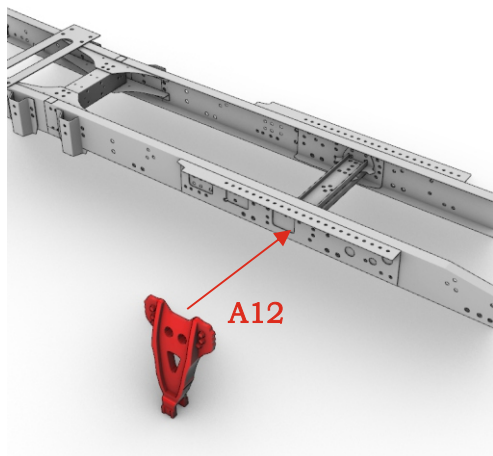
38. 



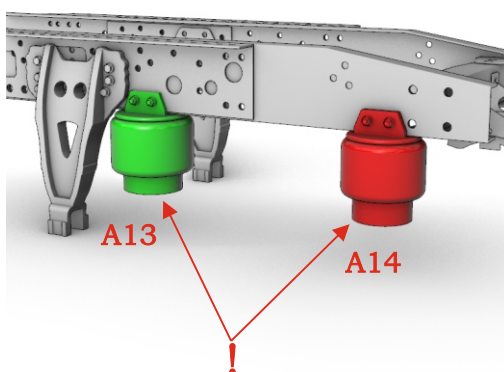
39. 




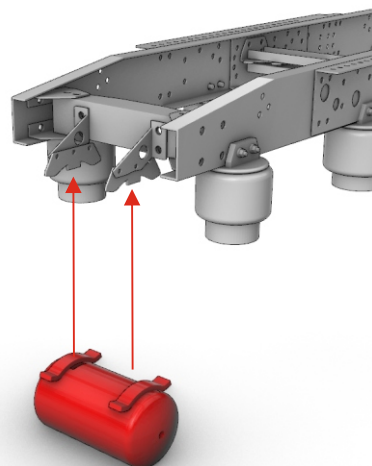
40.  x2



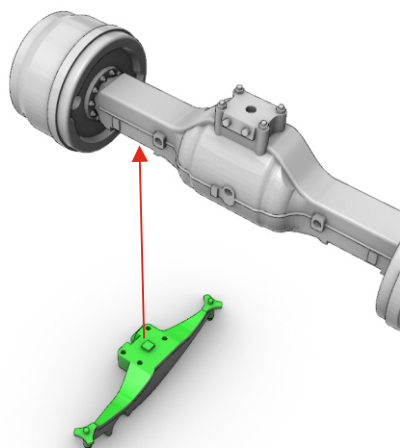
41.  x4



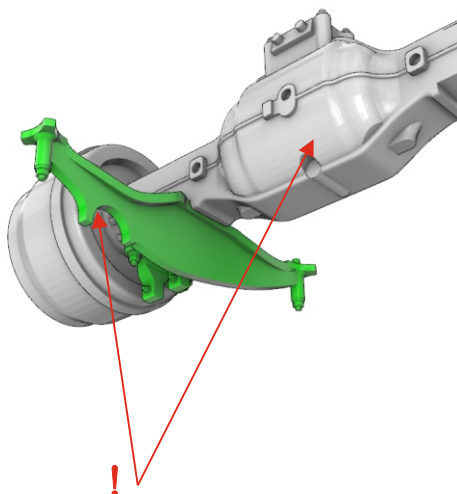
42. 



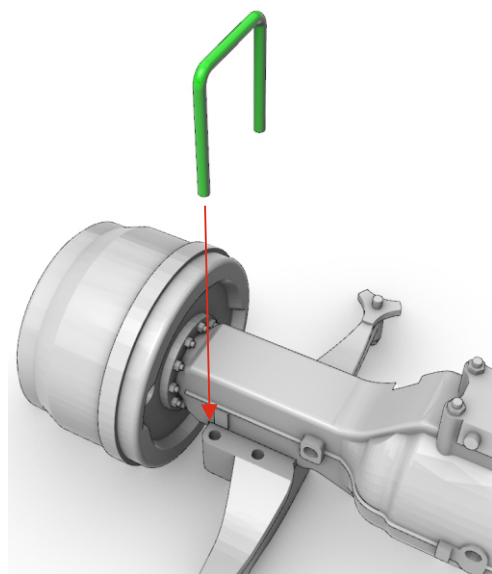
43.  x2




!

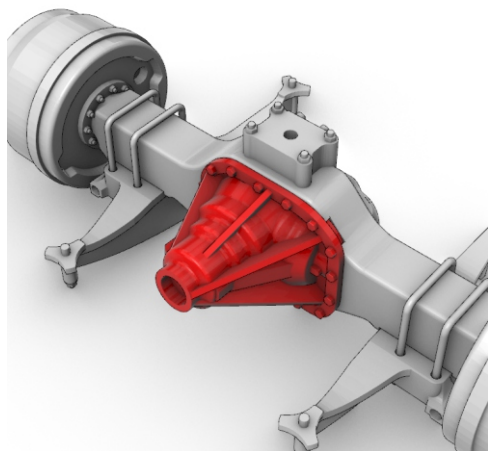


44.  x4

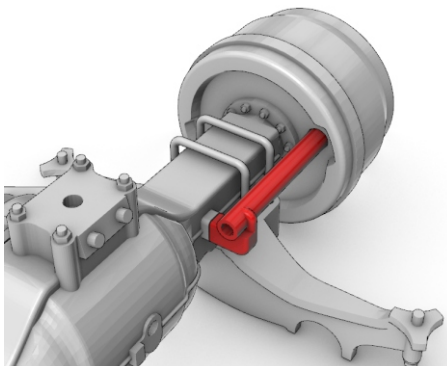


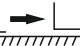
Dutch truck XG+ 6x4 chassis (FTT). Scale 1/24

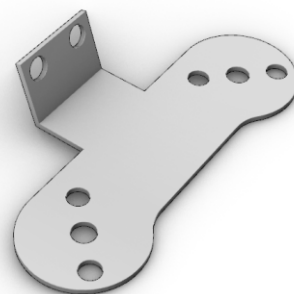
45. 



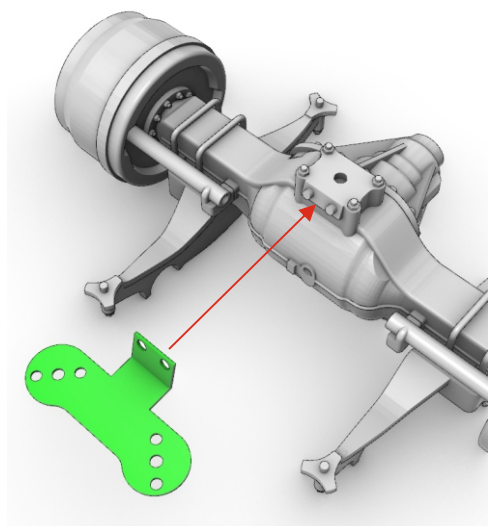
46.  x2



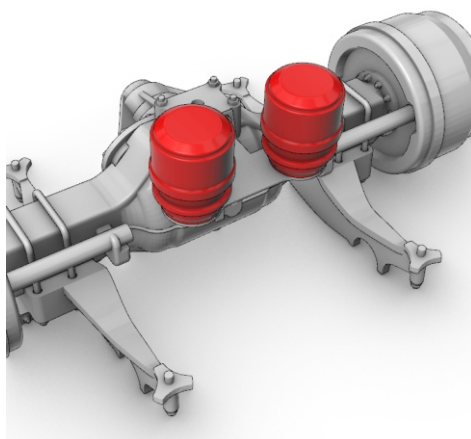
47. 
PE-part #27



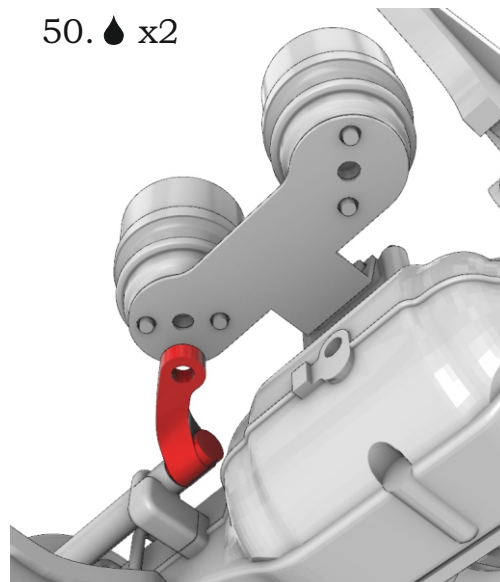
48. 



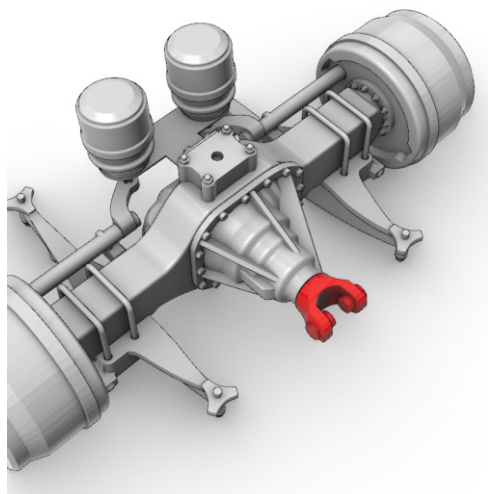
49. 



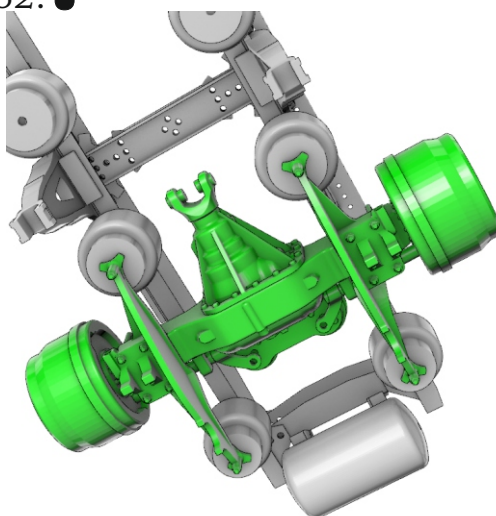
50.  x2



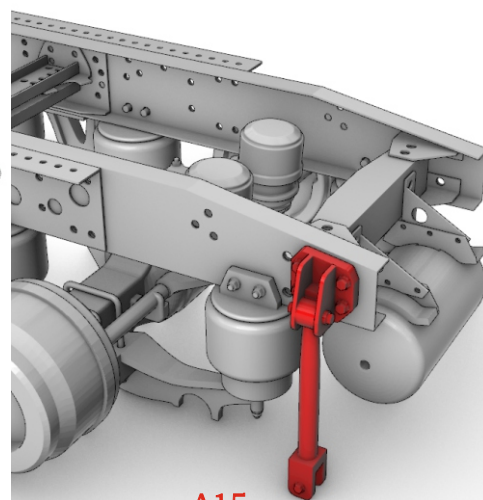
51. 



52. 



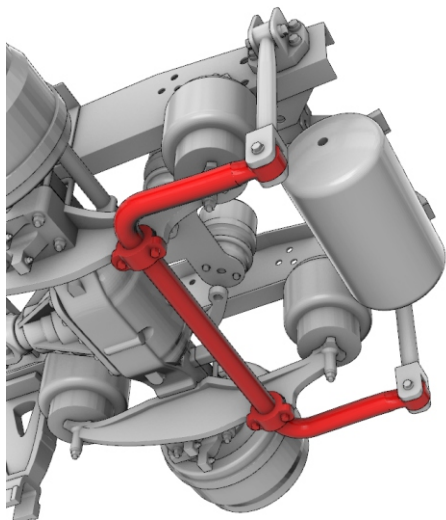
53.  x2



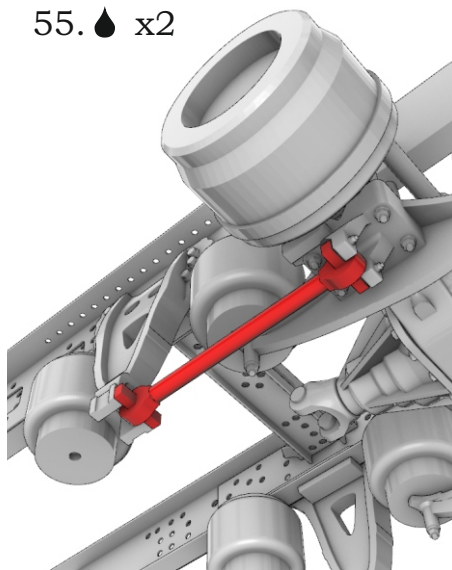
A15

Dutch truck XG+ 6x4 chassis (FTT). Scale 1/24

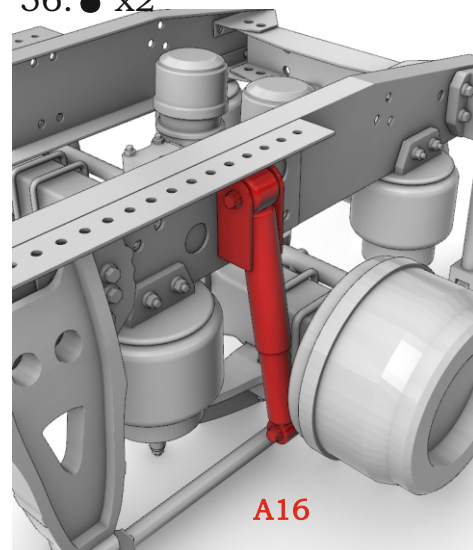
54. 🖐



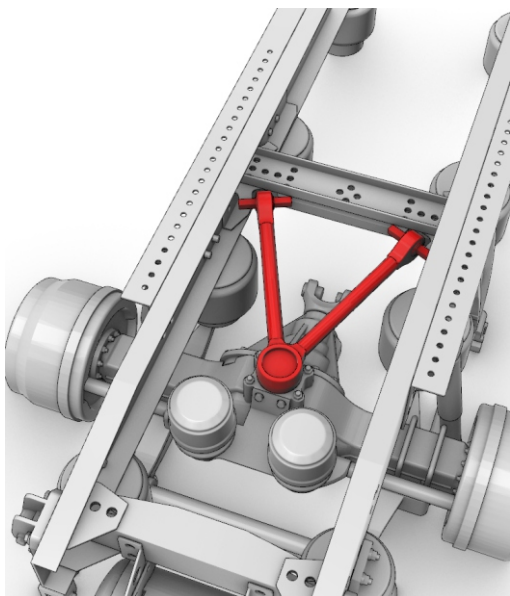
55. 🖐 x2



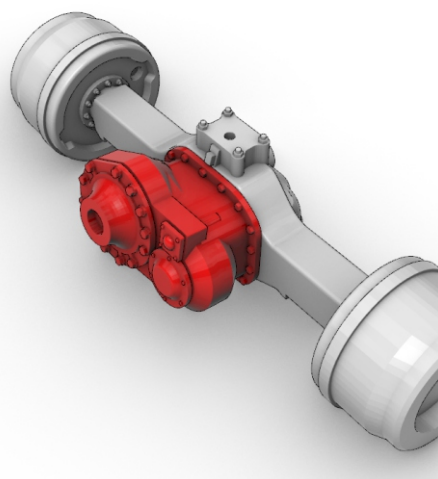
56. 🖐 x2



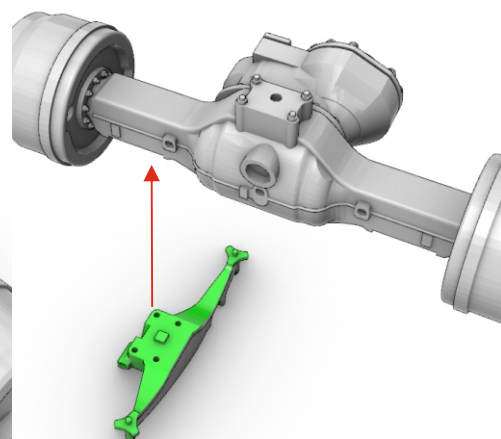
57. 🖐



58. 🖐

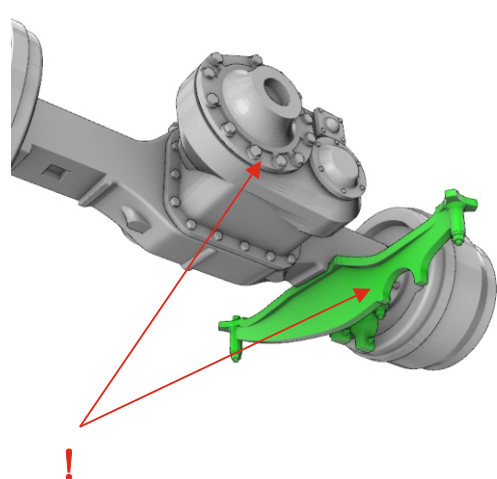


59. 🖐 x2

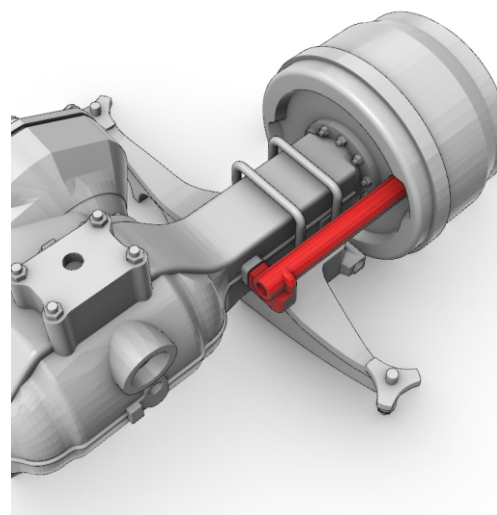
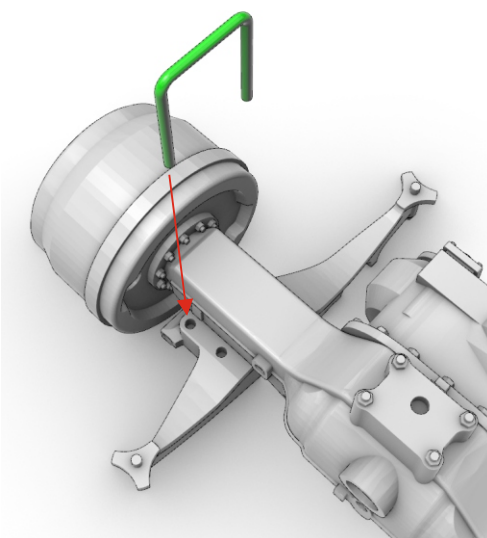


!

60. 🖐 x4



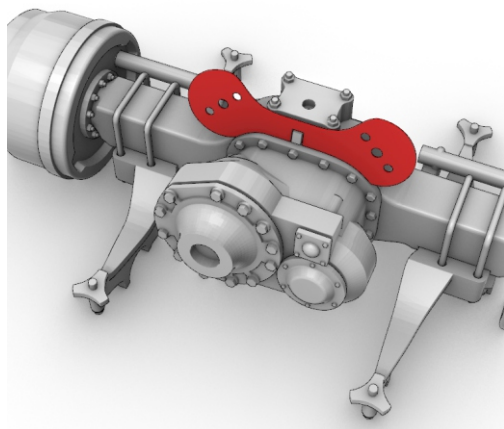
61. 🖐 x2



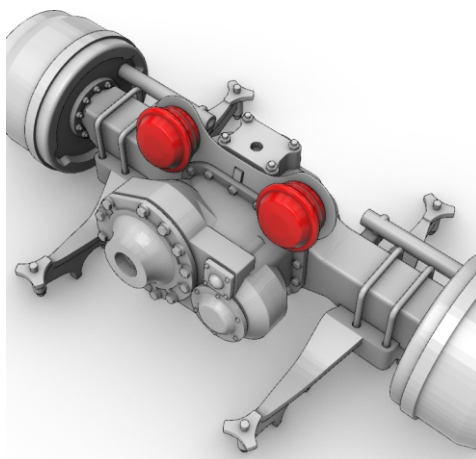
Dutch truck XG+ 6x4 chassis (FTT). Scale 1/24

62. 📍

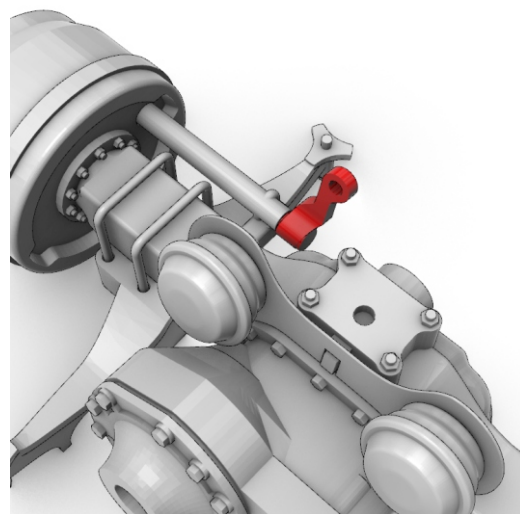
PE-part #26



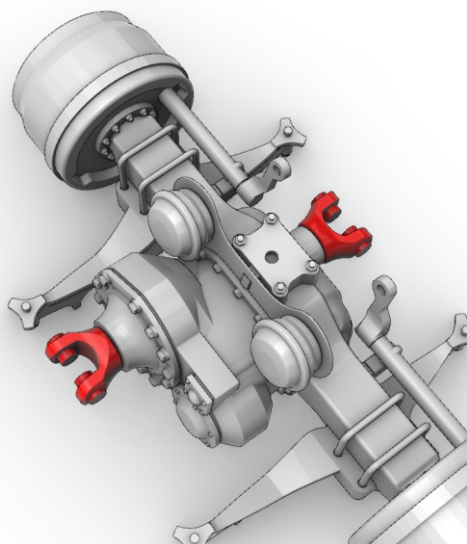
63. 📍



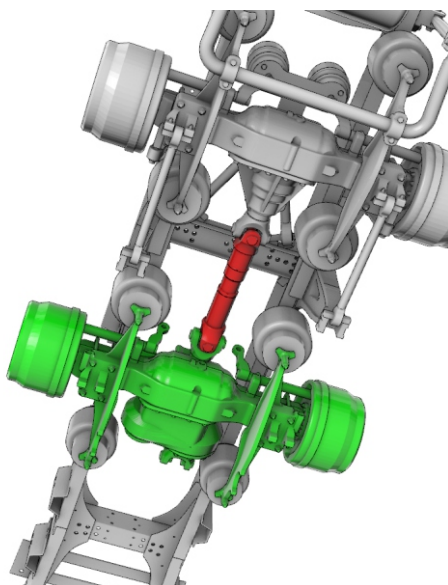
64. 📍 x2



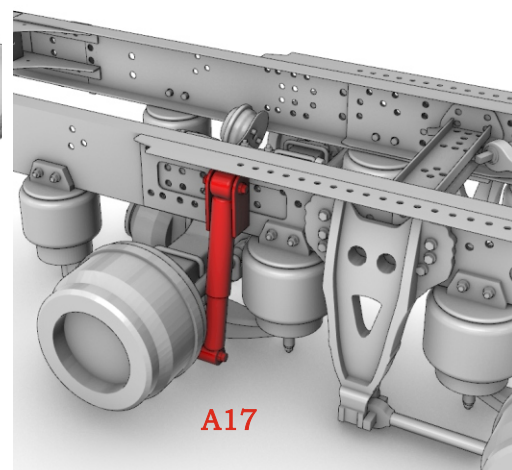
65. 📍



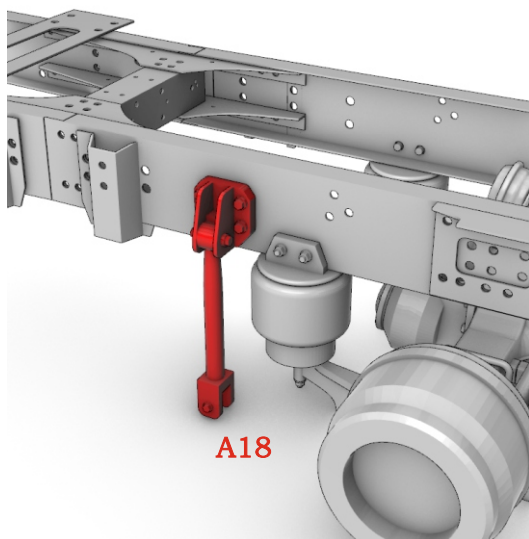
66. 📍



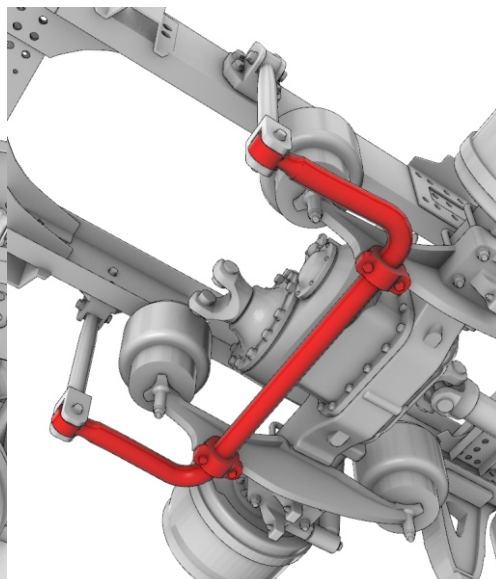
67. 📍 x2



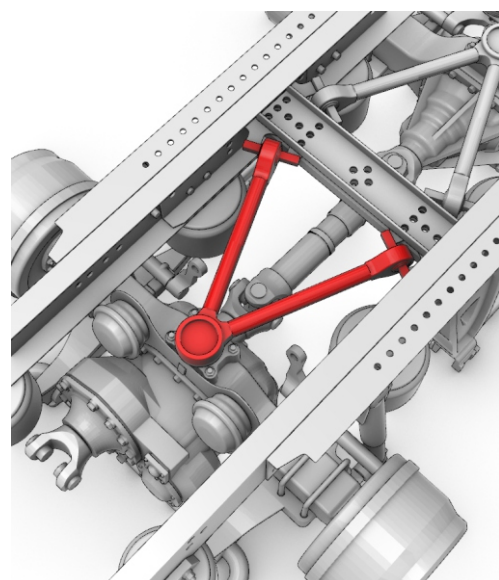
68. 📍 x2



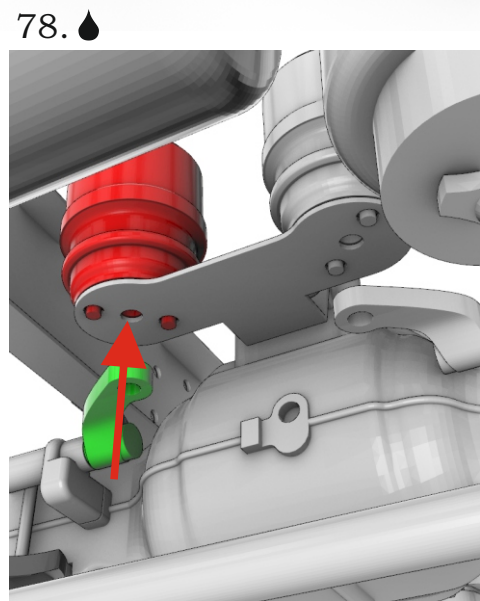
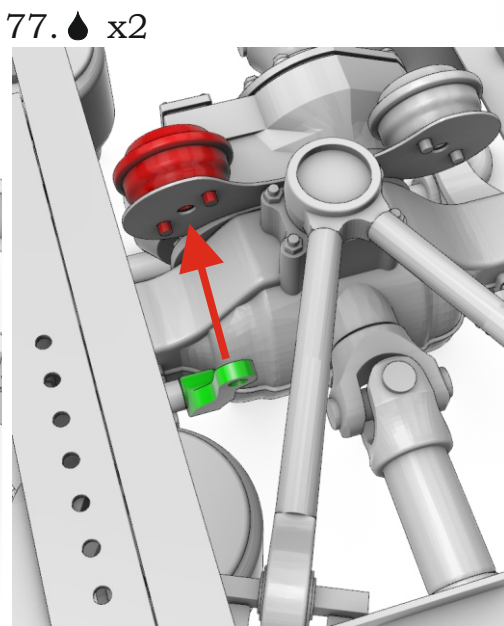
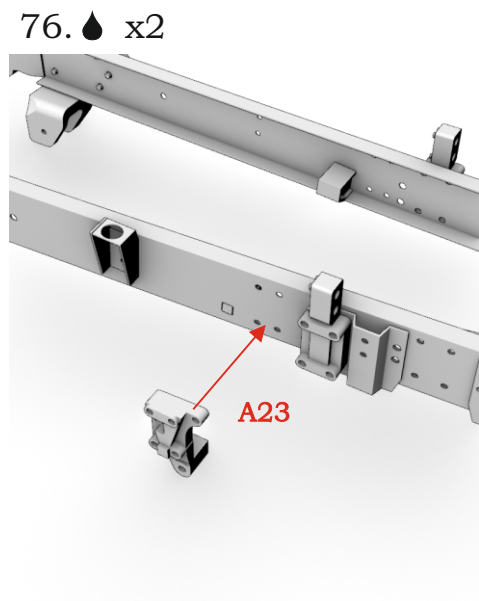
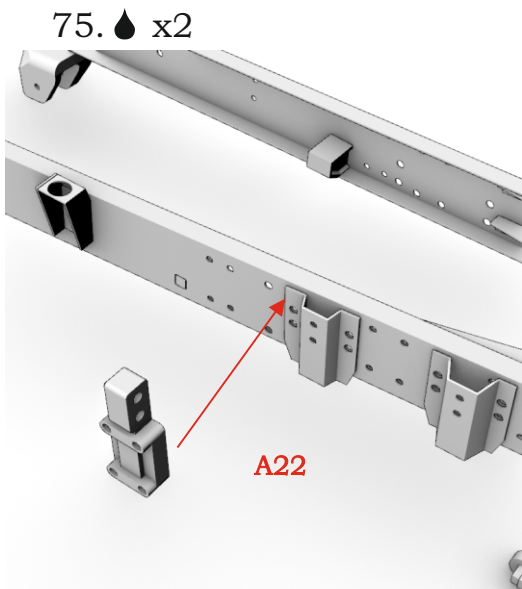
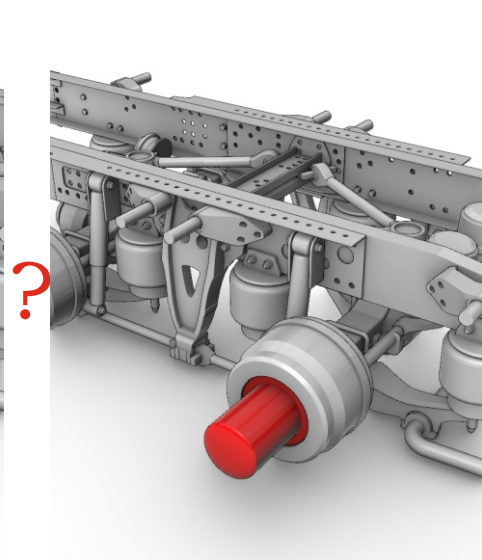
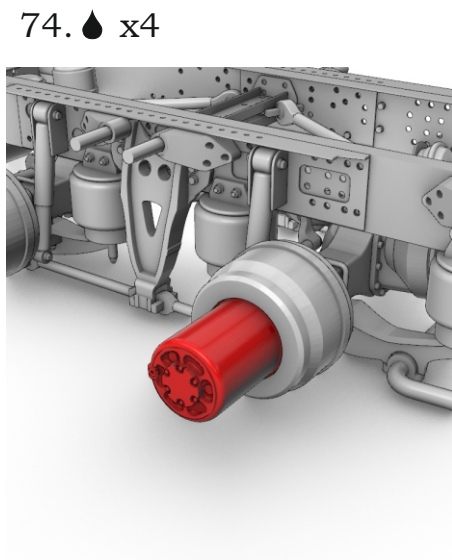
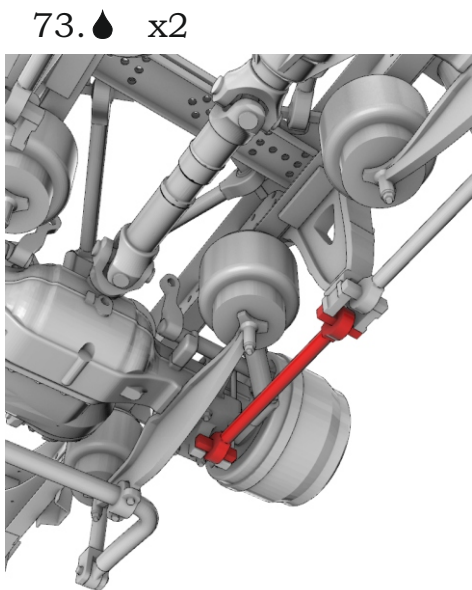
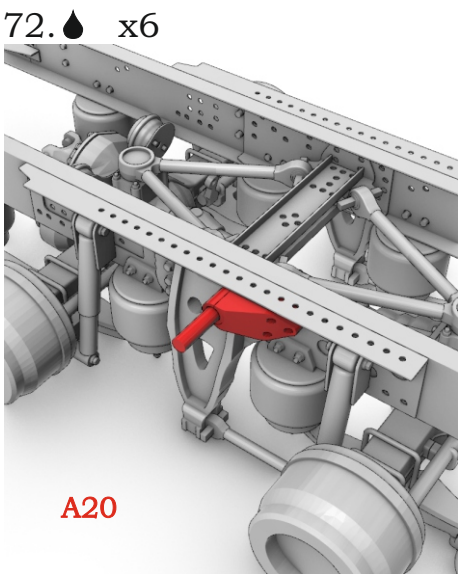
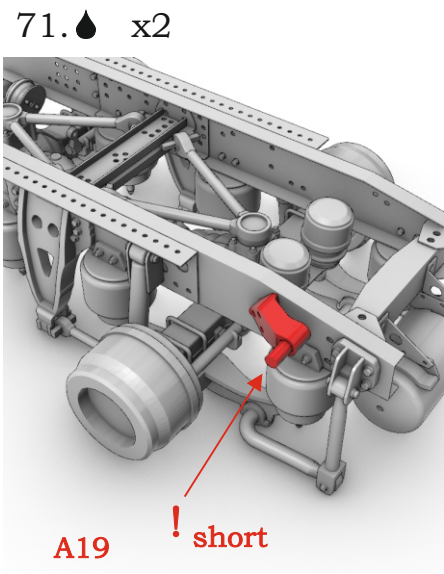
69. 📍



70. 📍



Dutch truck XG+ 6x4 chassis (FTT). Scale 1/24

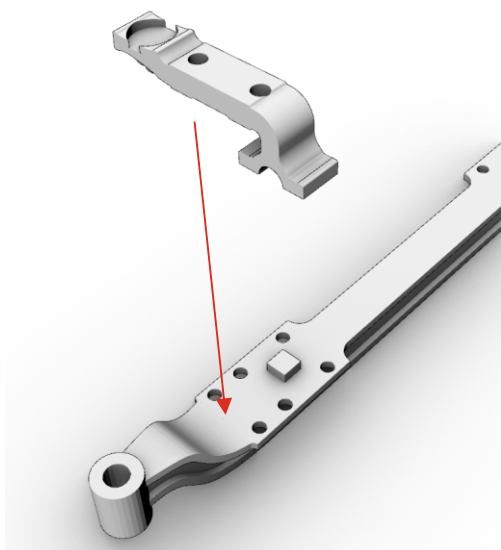


round profile 1 mm

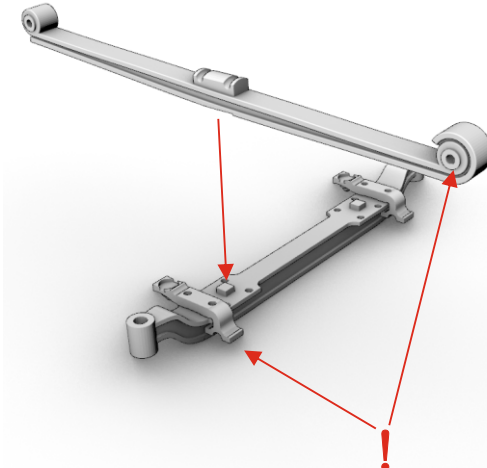
round profile 1 mm

Dutch truck XG+ 6x4 chassis (FTT). Scale 1/24

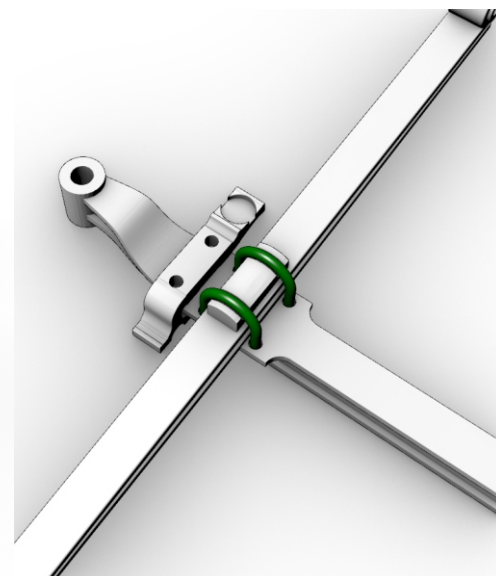
79.  x2



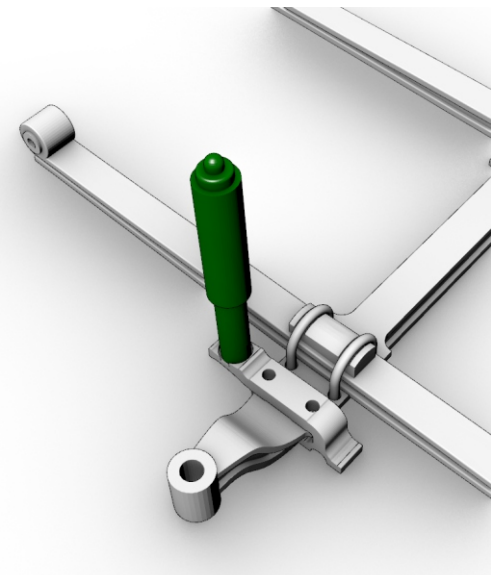
80.  x2



81.  x2



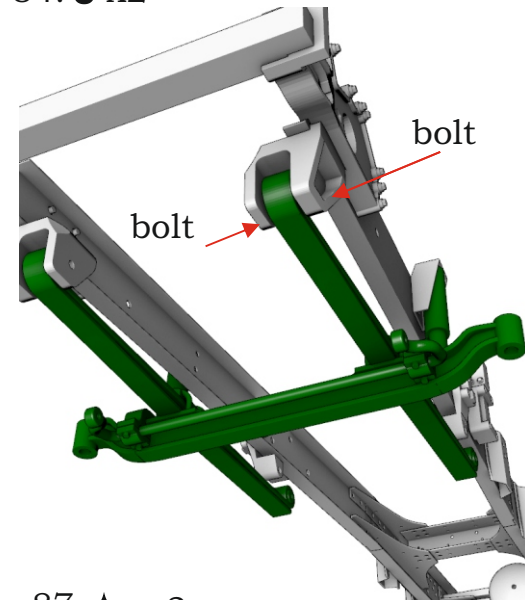
82.  x2



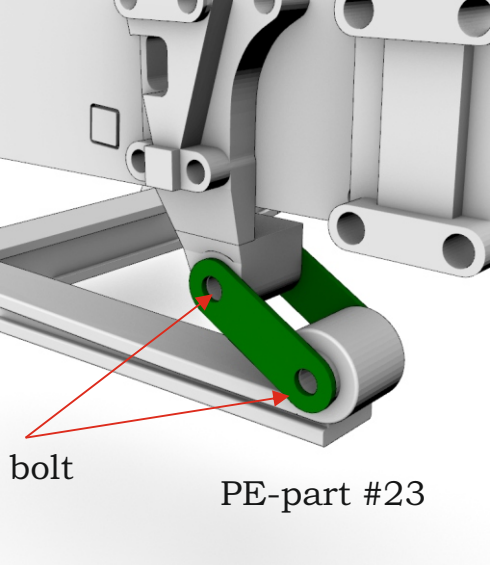
83. 



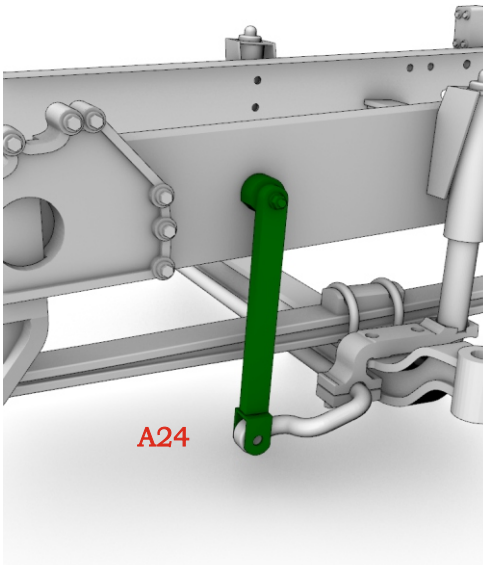
84.  x2



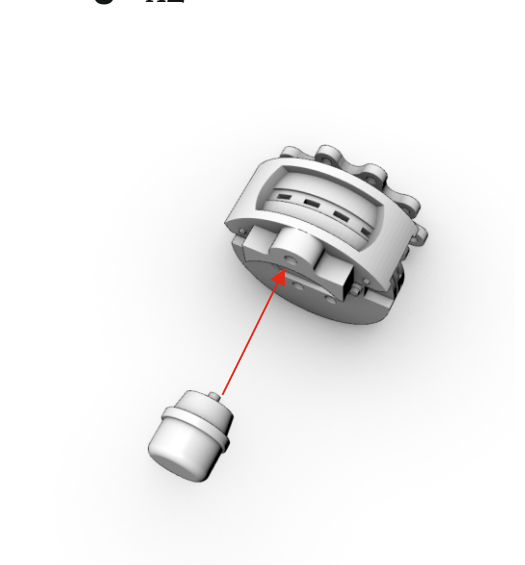
85.  x2



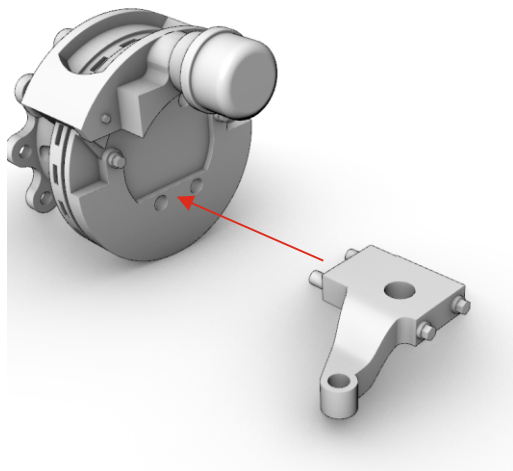
86.  x2




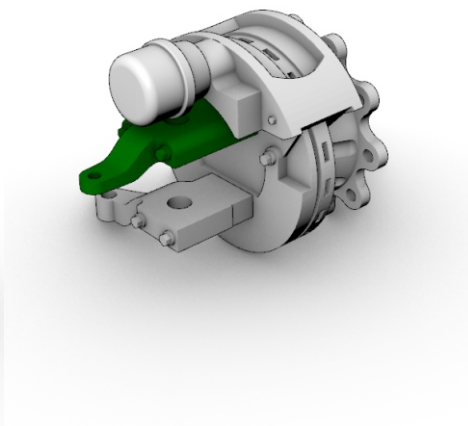
87.  x2




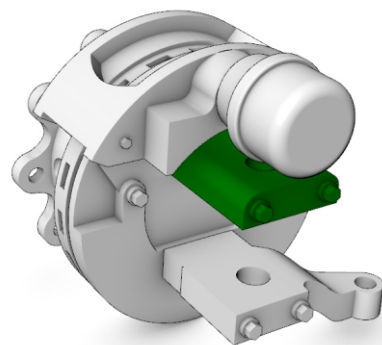
88.  x2



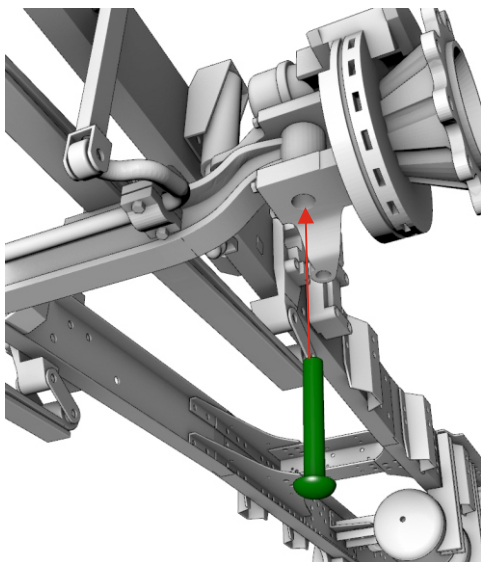
89. 




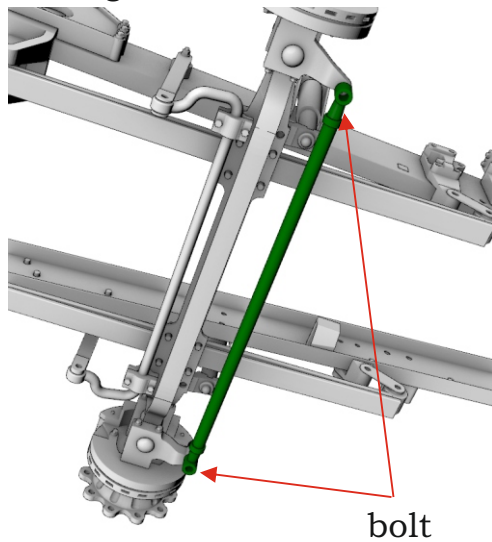
90. 




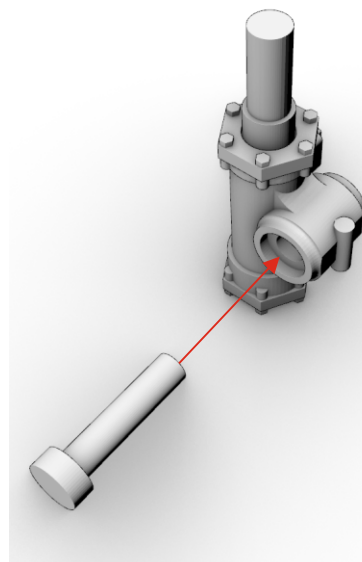
91.  x2




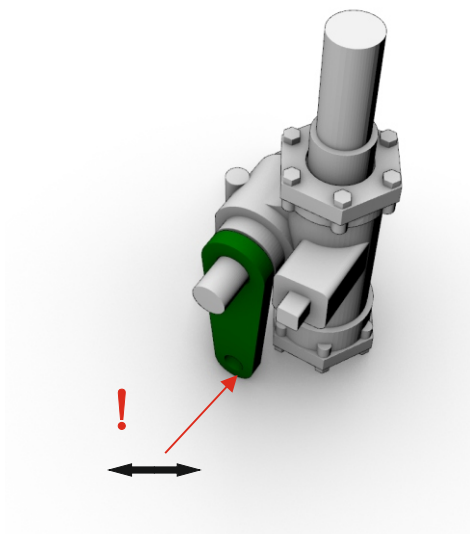
92. 




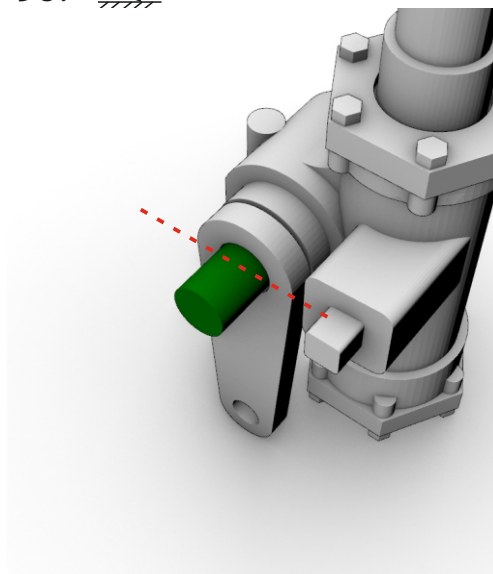
93. 



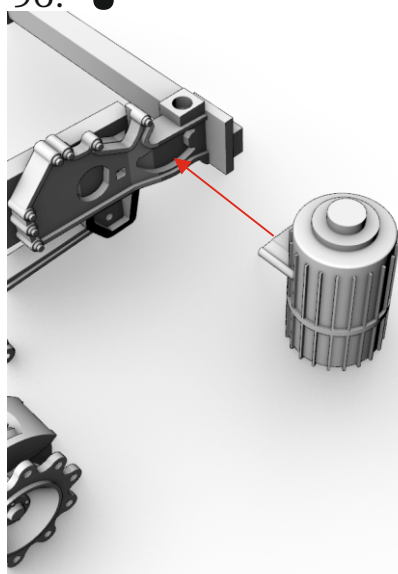
94. 



95. 

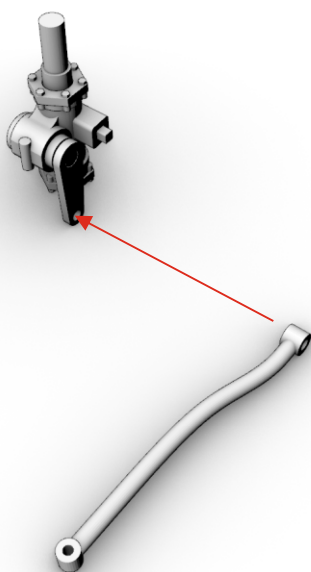


96. 

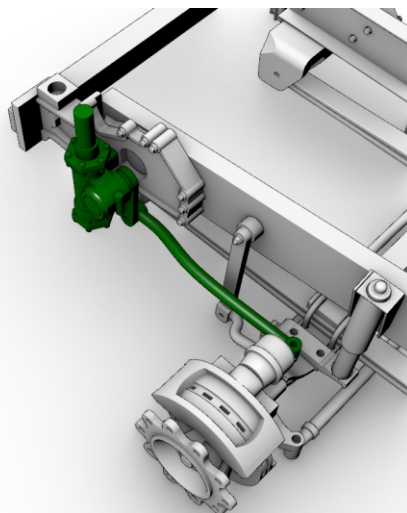


Dutch truck XG+ 6x4 chassis (FTT). Scale 1/24

97. 🖐



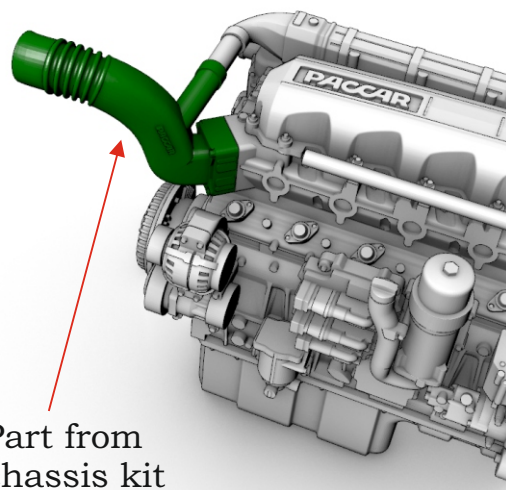
98. 🖐



! On the right side
for RHD chassis

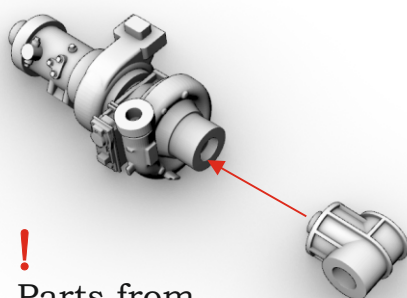
99. 🖐

A&N Model Trucks
MX-13 engine shown



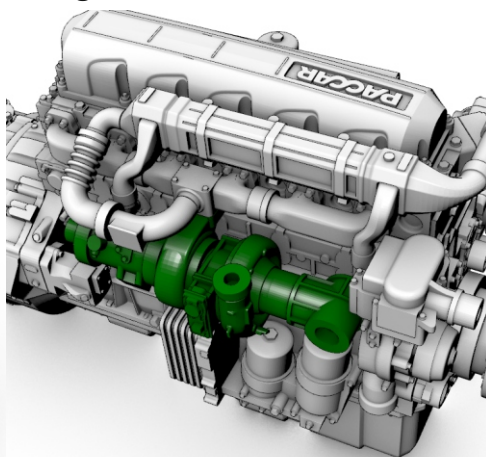
! Part from
chassis kit

100. 🖐

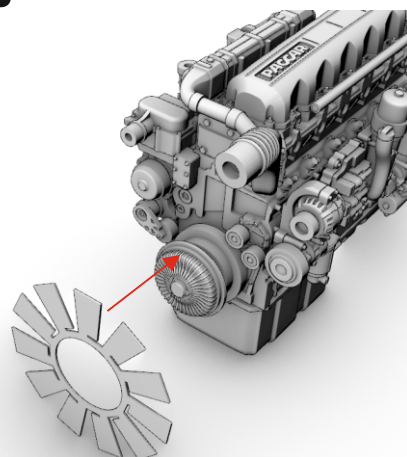


! Parts from
chassis kit

101. 🖐

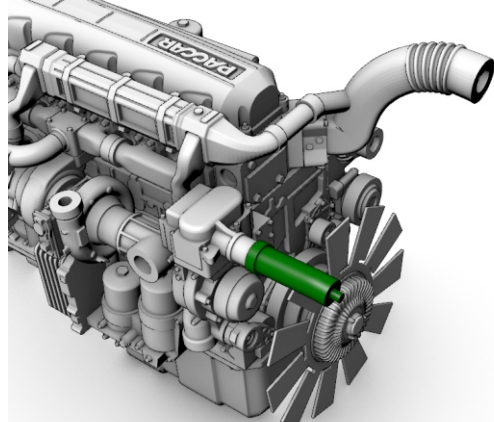


102. 🖐

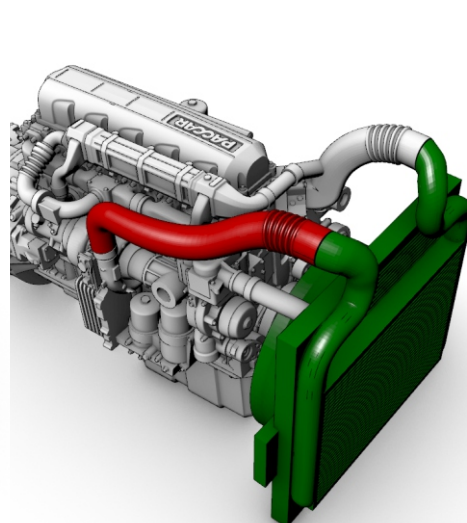


PE-part #36

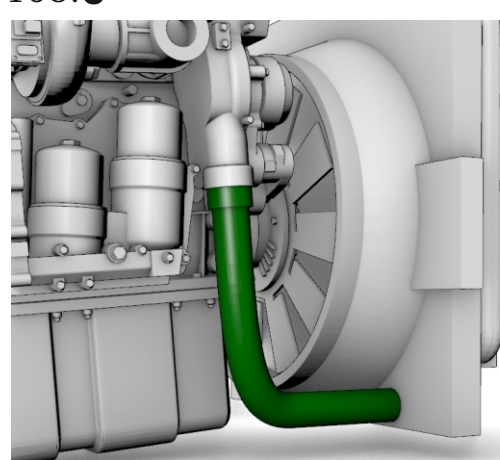
103. 🖐



104. 🖐

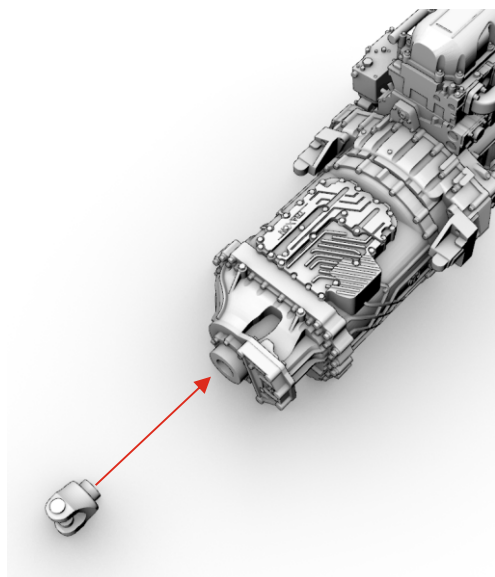


105. 🖐

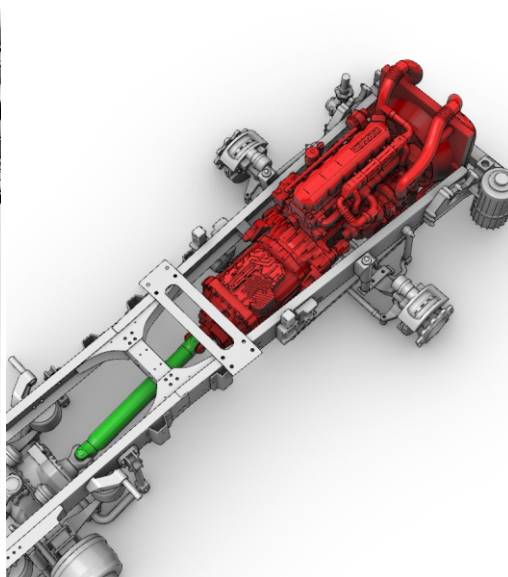



Dutch truck XG+ 6x4 chassis (FTT). Scale 1/24

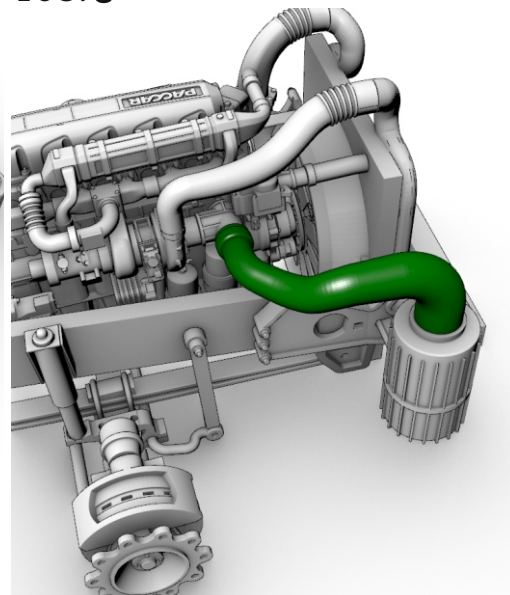
106. 




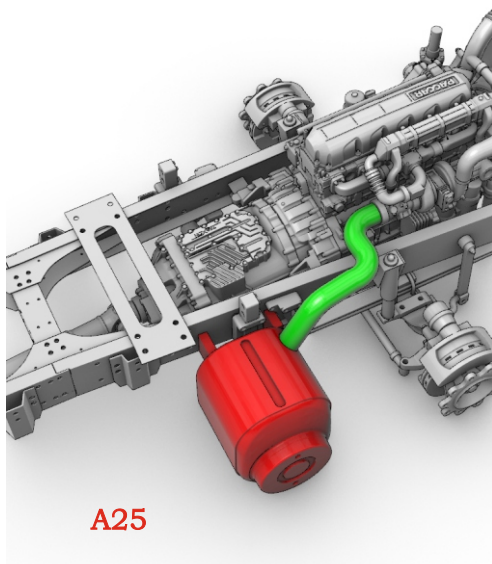
107. 




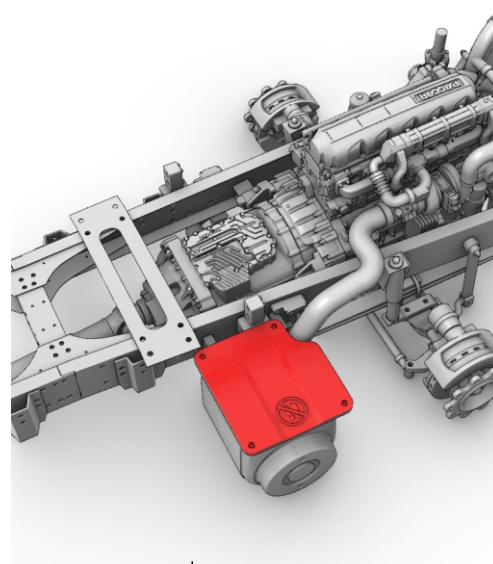
108. 



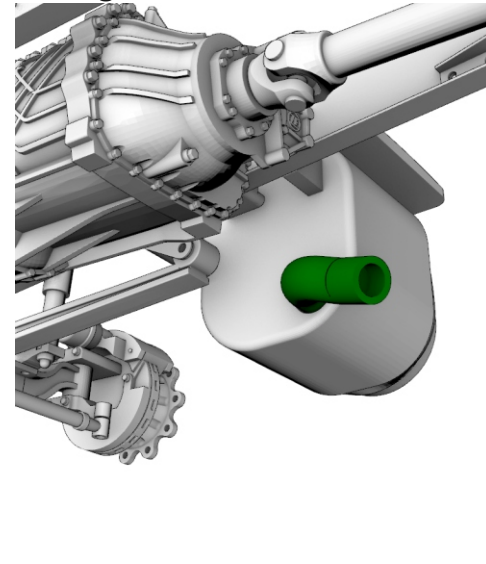
109. 




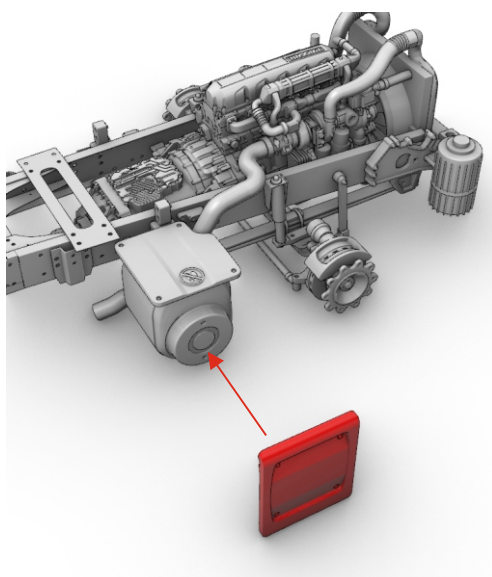
110. 



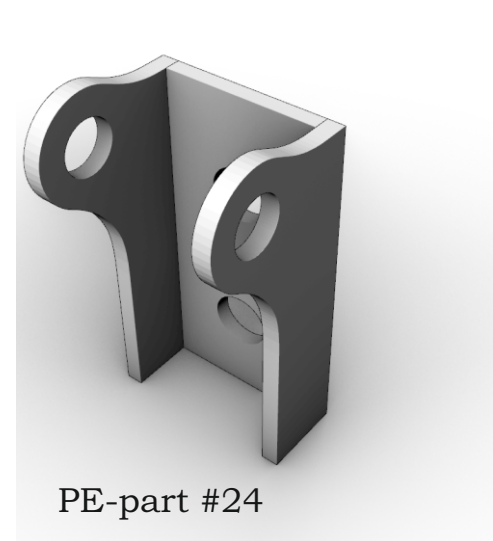
111. 



112. 

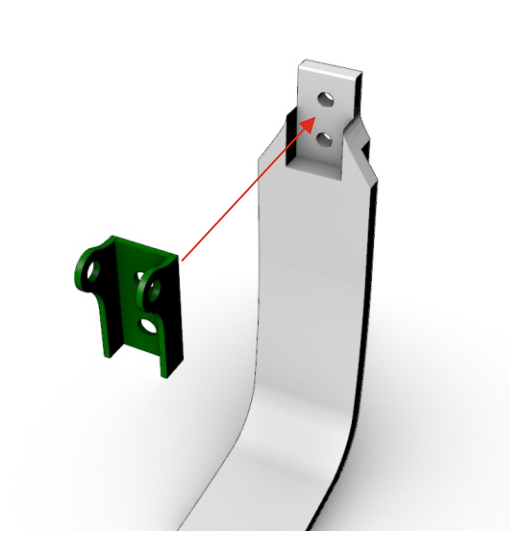


113.  x5



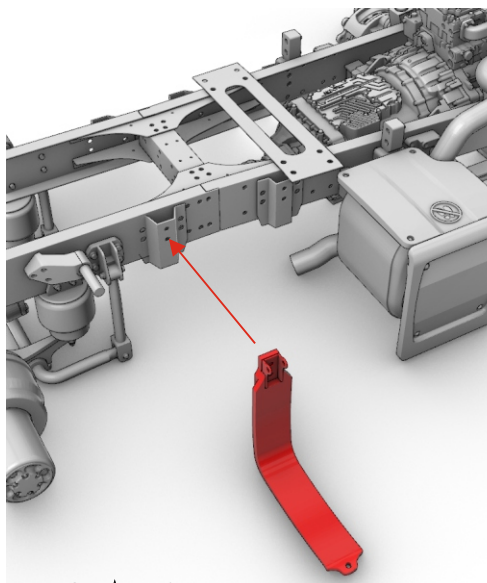
PE-part #24



114.  x5

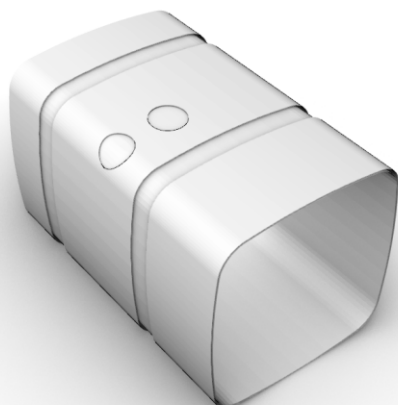


Dutch truck XG+ 6x4 chassis (FTT). Scale 1/24


115.  x2

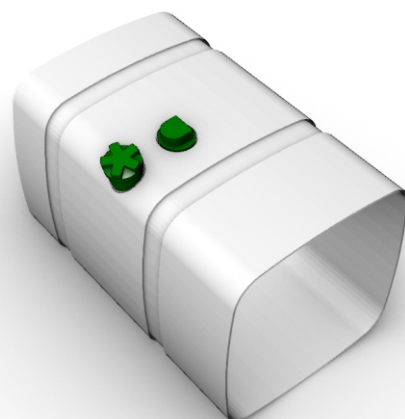


116.  

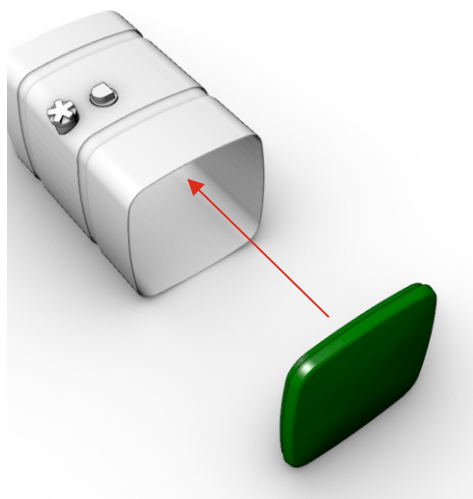


PE-part #34

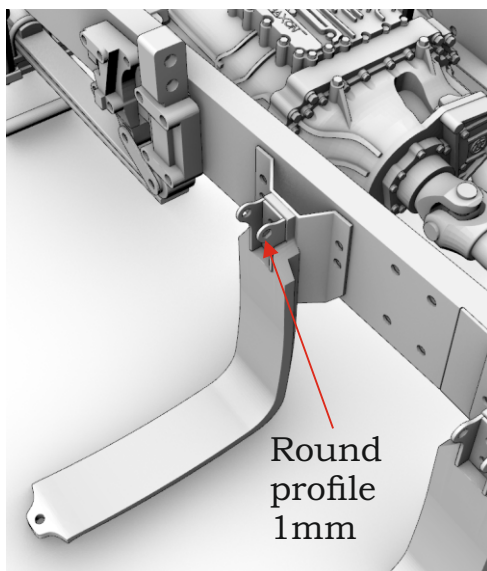
117. 





118.  x2




119.  x5

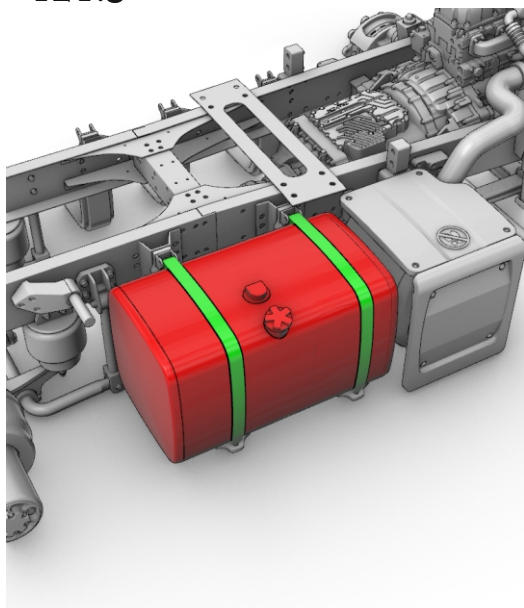




120.   x5

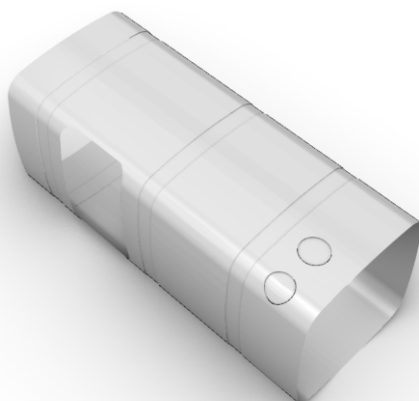
PE-part #35




121. 

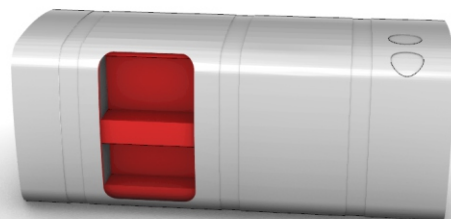


122.  



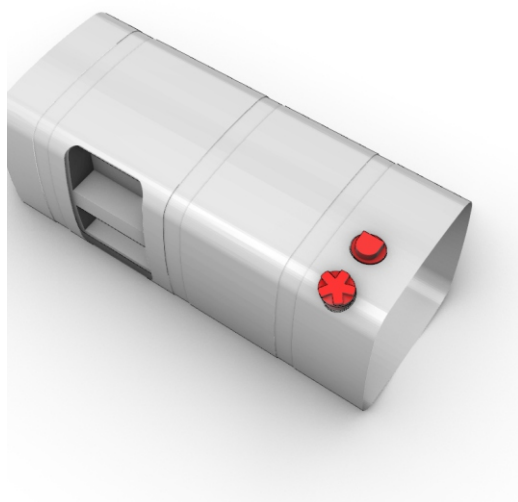
PE-part #33

123. 

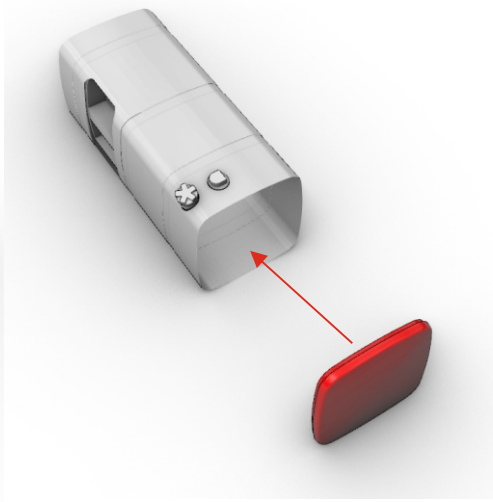


Dutch truck XG+ 6x4 chassis (FTT). Scale 1/24

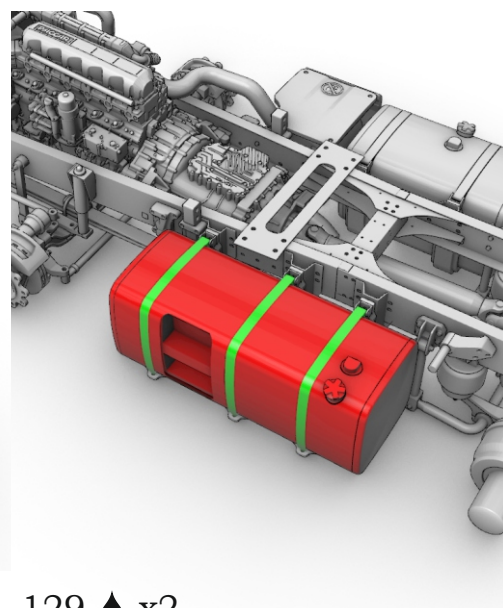
124.🔹



125.🔹 x2

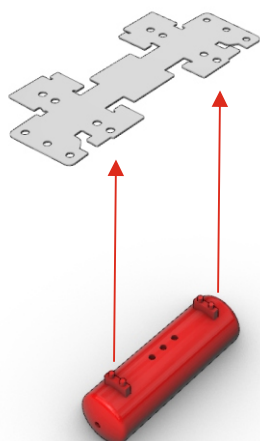


126.🔹

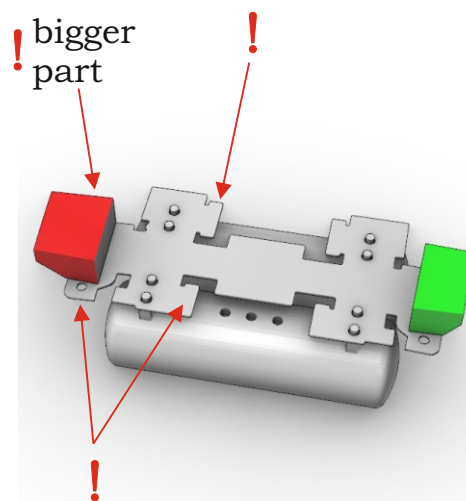


127.🔹 x2

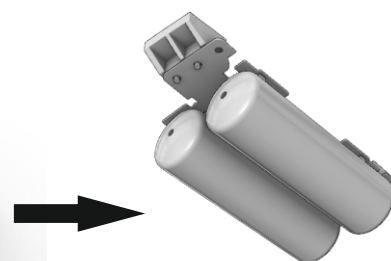
PE-part #28




128.🔹



129.🔹 x2

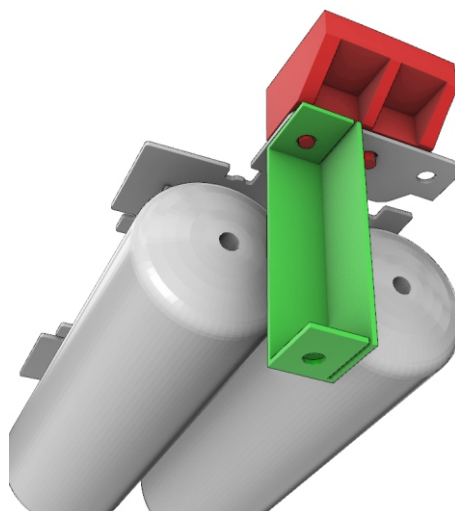


130.  x4

PE-part #31



131.🔹 x2



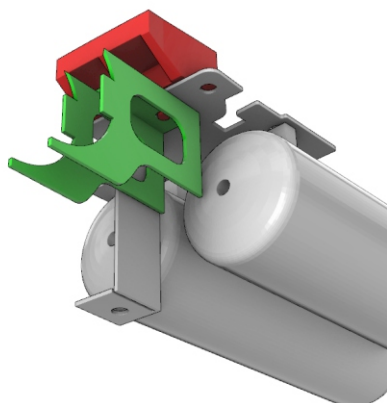
132.  x2

PE-part #32

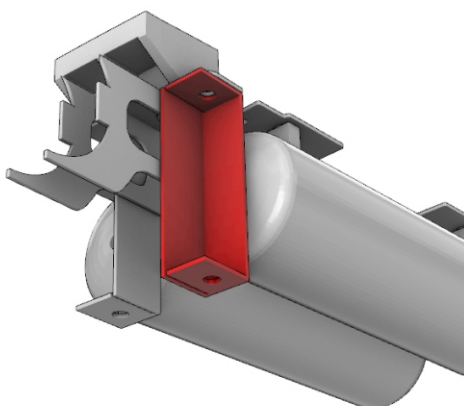


Dutch truck XG+ 6x4 chassis (FTT). Scale 1/24

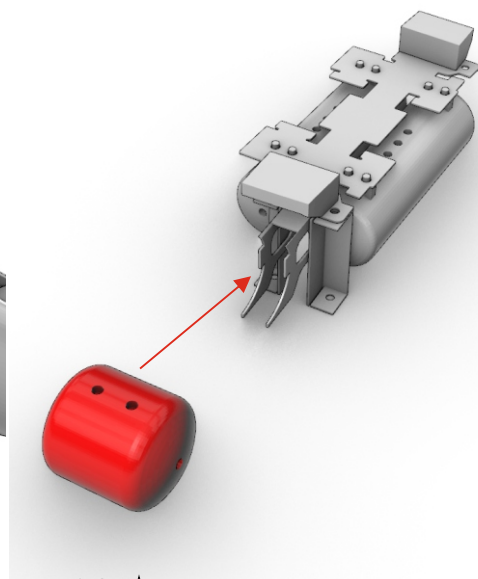
133. 🛢 x2



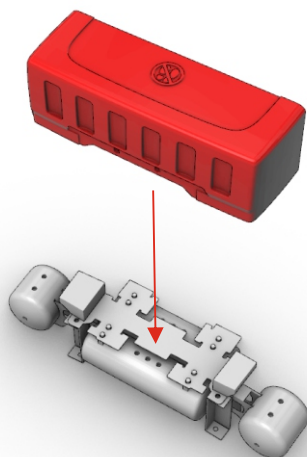
134. 🛢 x2



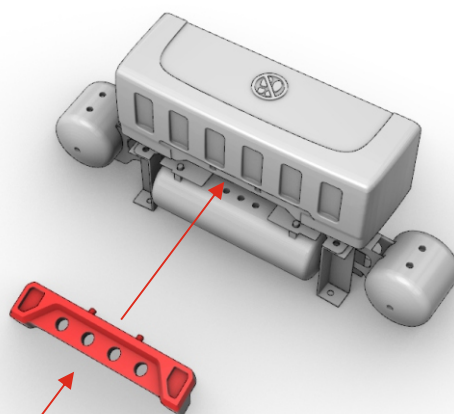
135. 🛢 x2



136. 🛢

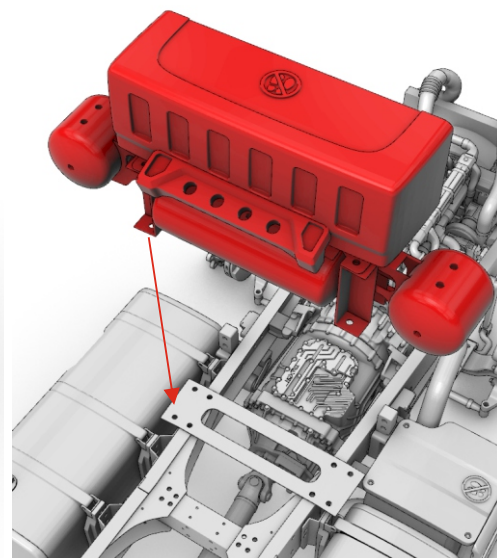


137. 🛢



! Part from XG+ cab kit

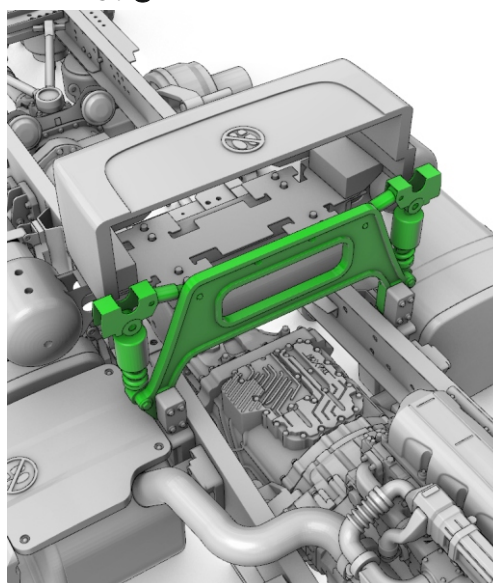
138. 🛢



139.

Proceed on steps 59-62 of Dutch truck XG+ assembling instruction.


140. 🛢

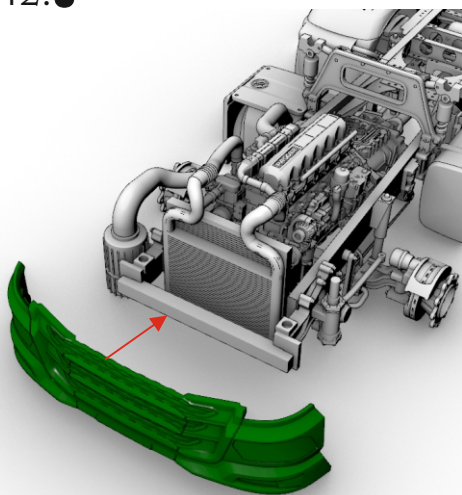


141.

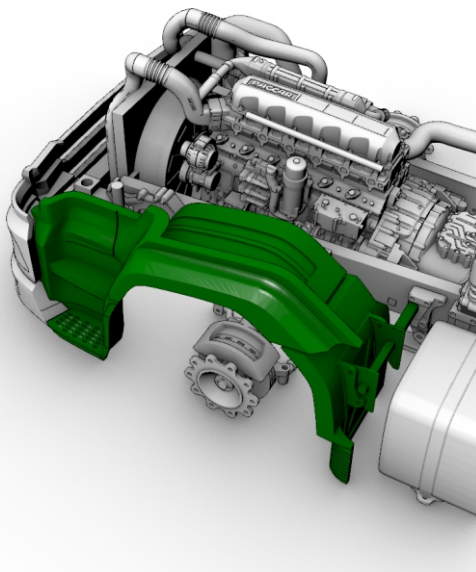
Proceed on steps 54-72 of Dutch truck XG+ assembling instruction.


Dutch truck XG+ 6x4 chassis (FTT). Scale 1/24

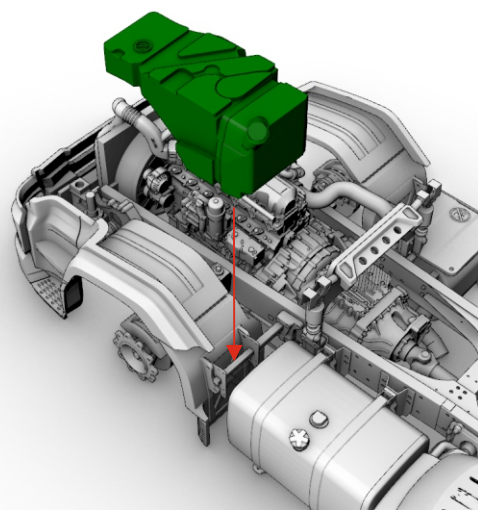
142. 



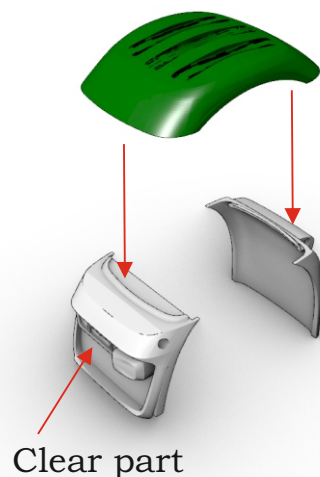
143.  x2



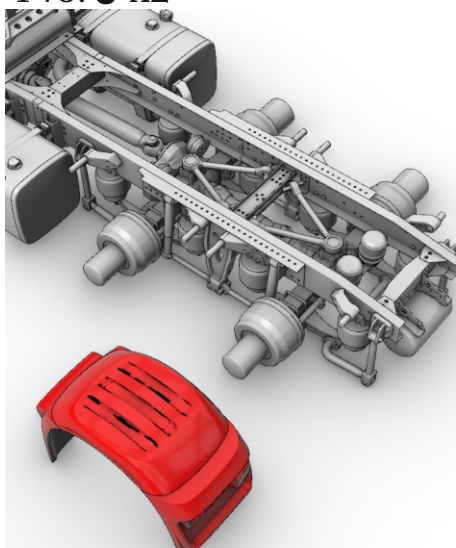
144. 



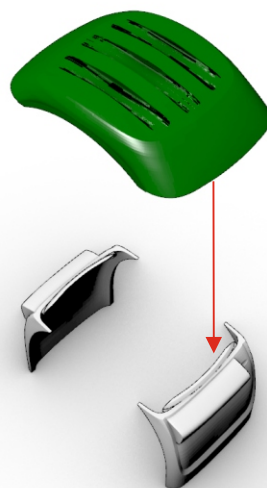
145.  x2



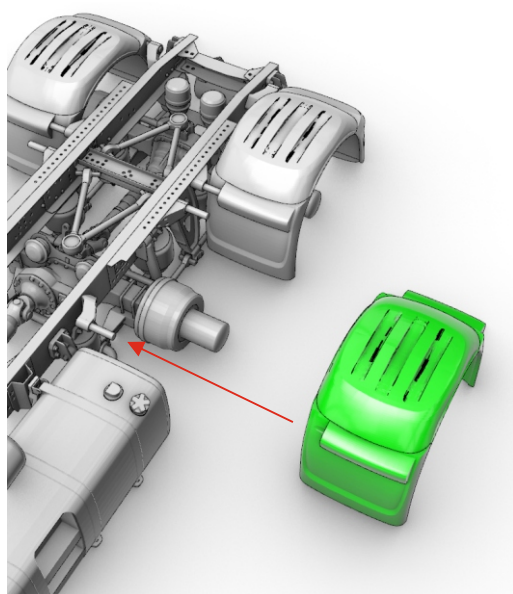
146.  x2




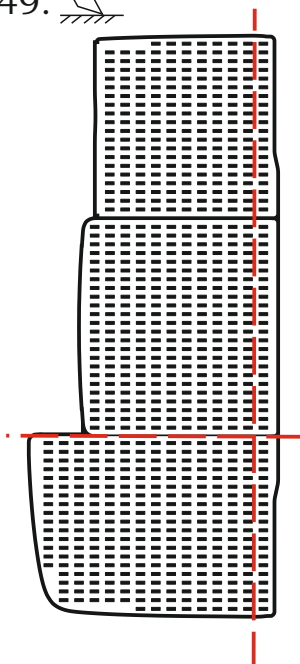
147.  x2



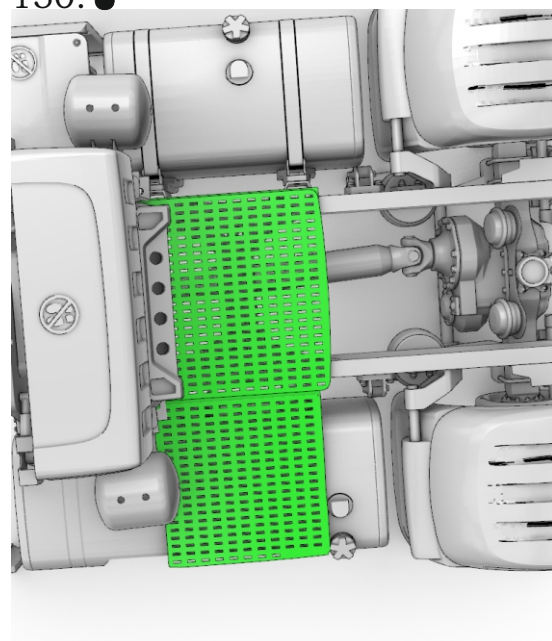
148.  x2



149. 

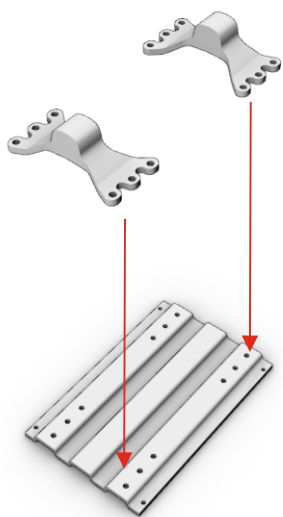


150. 

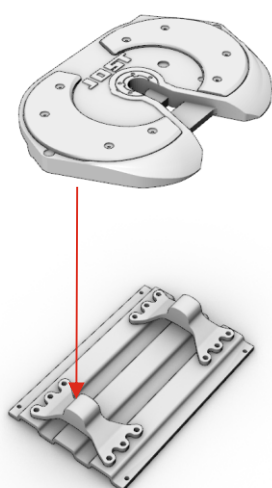


Dutch truck XG+ 6x4 chassis (FTT). Scale 1/24

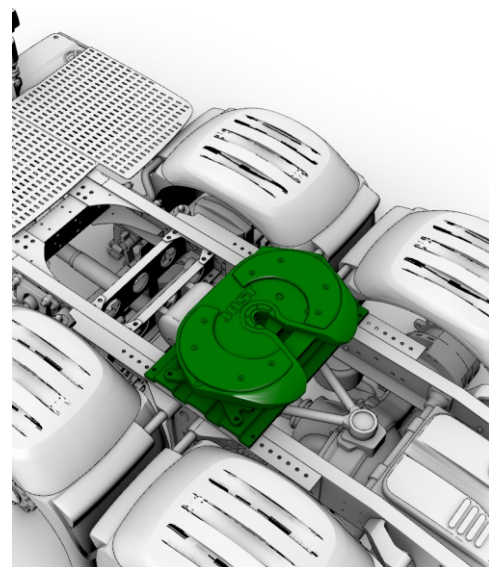
151.●



152.●



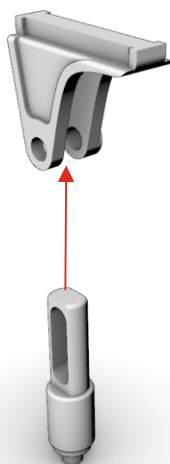
153.●



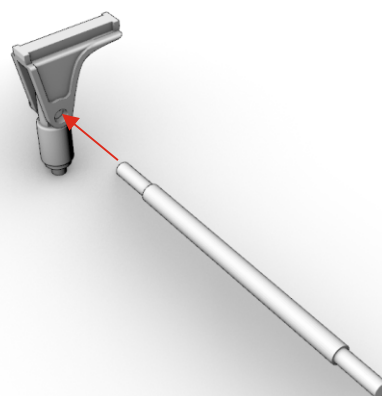
!

If you don't plan to make tilting cab, skip next steps and proceed on step #80 of Dutch truck XG+ assembling instruction.

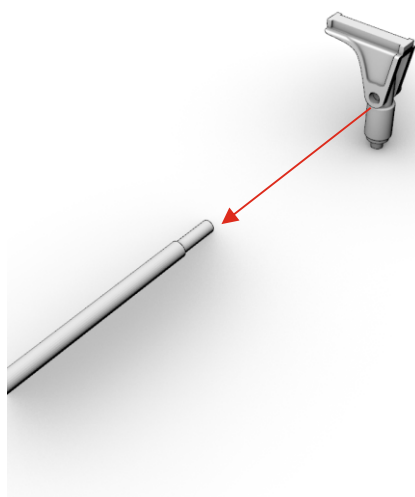
154.Ø x2



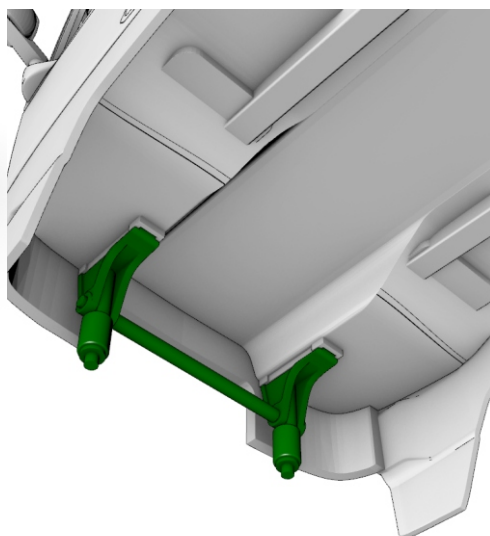
155.Ø



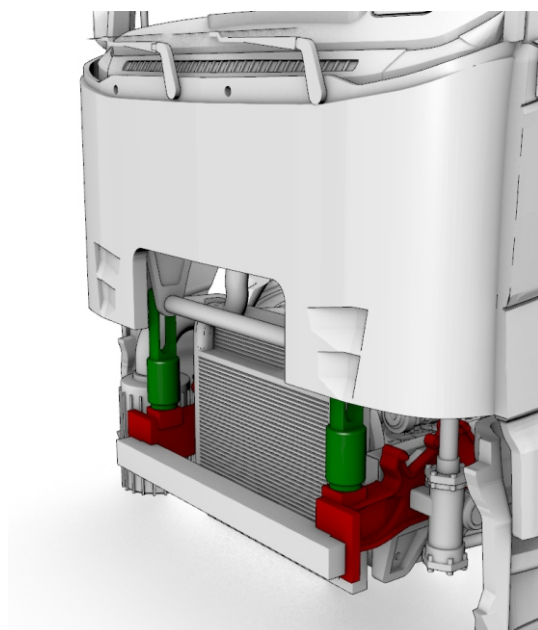
156.Ø



157.●



158.●



Dutch truck XG+ 6x4 chassis (FTT). Scale 1/24

Proceed on step #81
of Dutch truck XG+
assembling instruction.