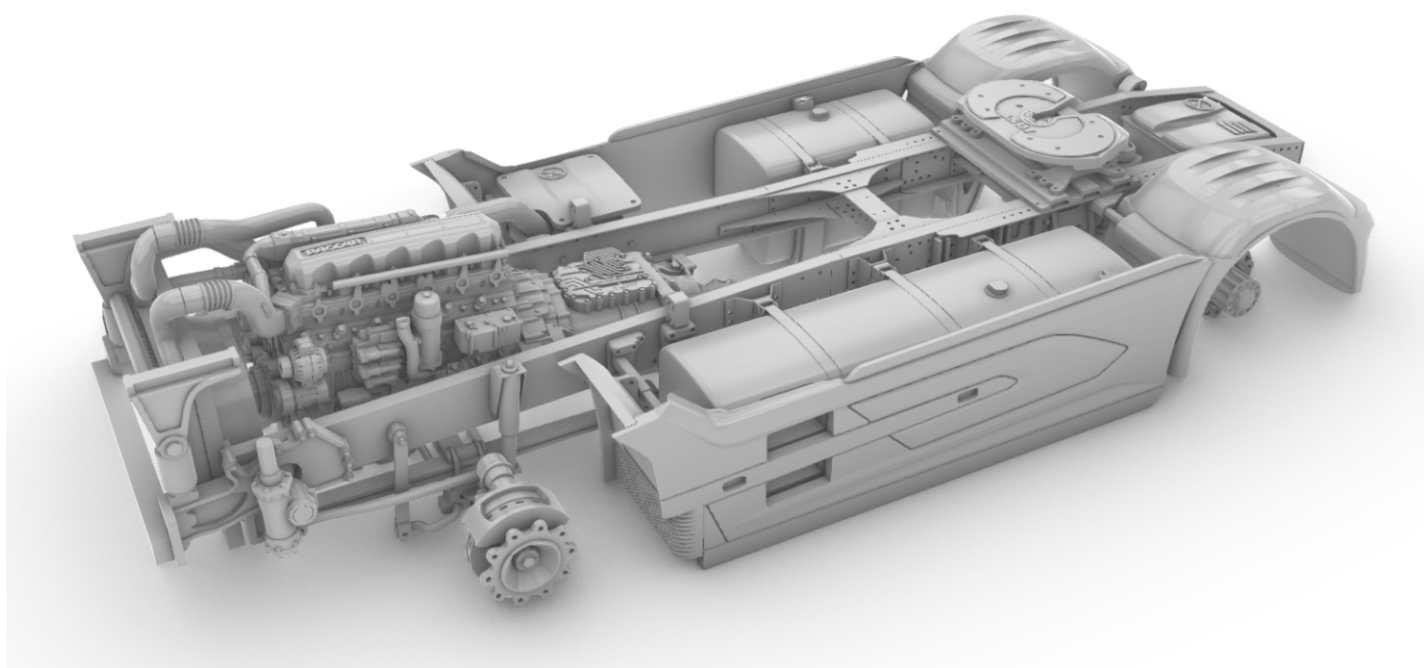


A&N Model Trucks



Dutch truck XG+ 4×2 (FT) chassis

Multimedia kit, 1/24

Warning!

Read carefully this instruction and please follow it during assembling, otherwise you could face problems with assembling the model.


Photo-etched parts have sharp edges, please be careful.

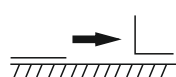
This model kit contains very small parts and is not suitable for children. THIS IS NOT A TOY!

We suggest to solder photo-etched frames. Check how-to videos on our [YouTube channel](#).

Symbols:

 - glue parts;


 - do not glue parts;

 - bend parts;

 - attention;

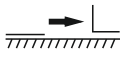
 - moving parts;

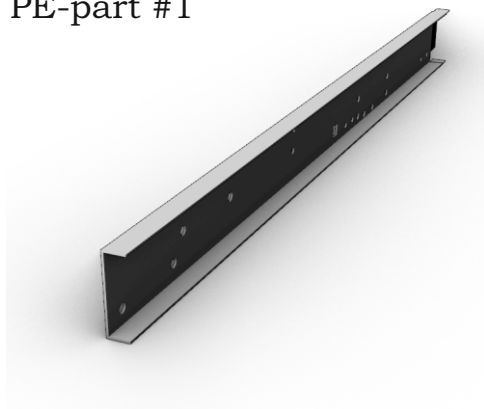
 - your choice;

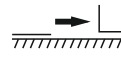
 - cut;

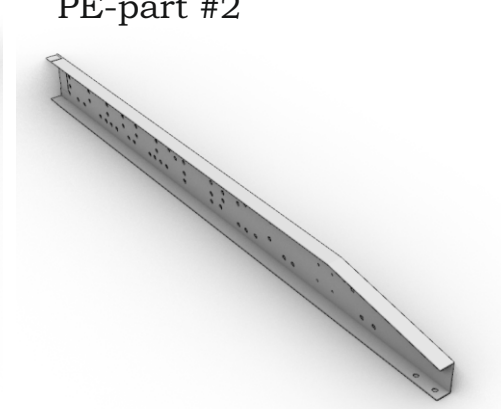
 - drill;

Dutch truck XG+ 4x2 (FT) chassis. Scale 1/24

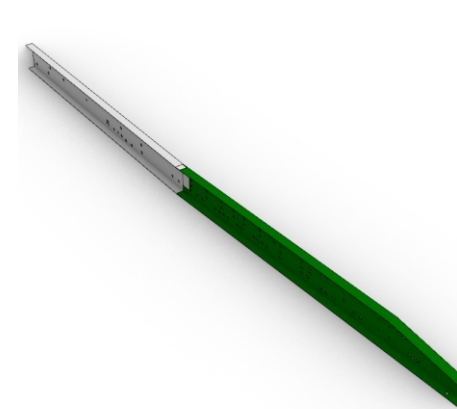
1. 
PE-part #1

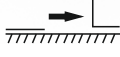


2. 
PE-part #2



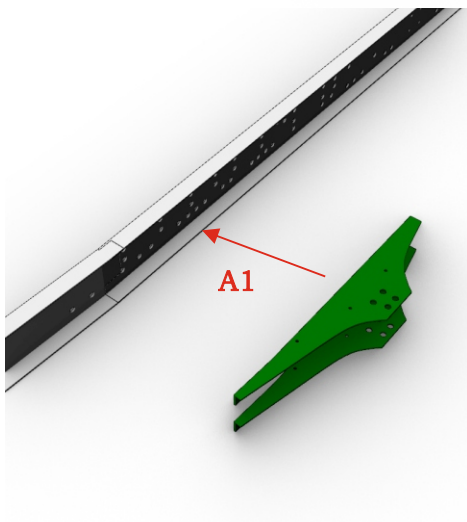
3. 




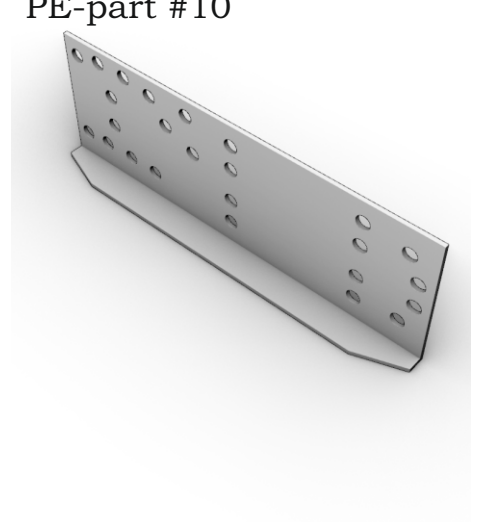
4.  x2
PE-part #7



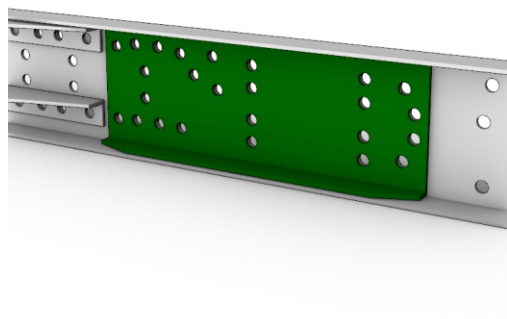
5. 

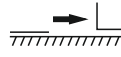


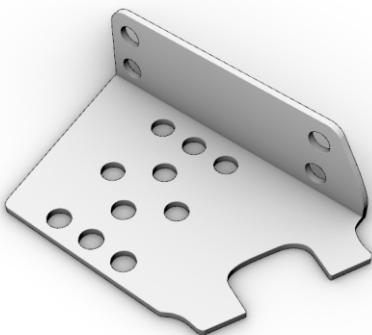
6. 
PE-part #10



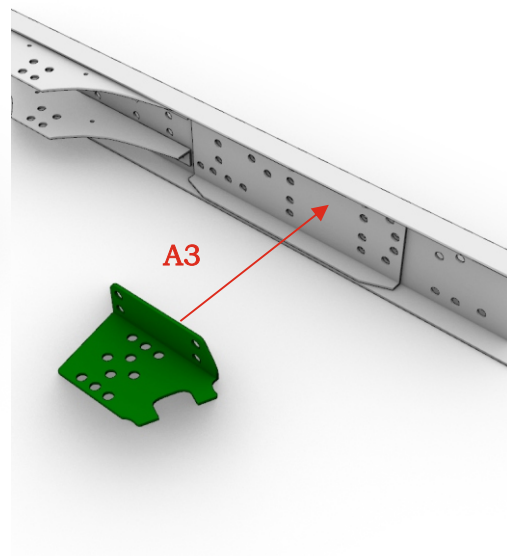
7. 




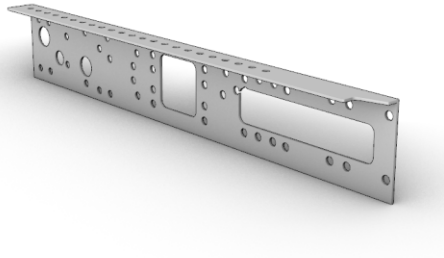
8. 
PE-part #14



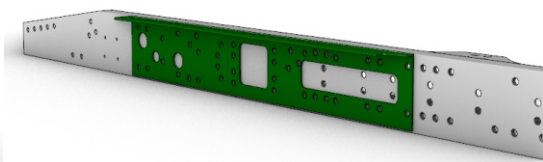
9. 




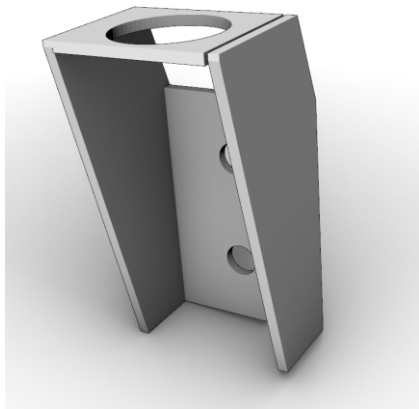
10.  PE-part #5



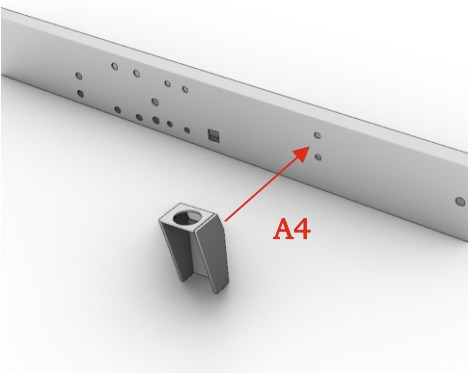
11. 



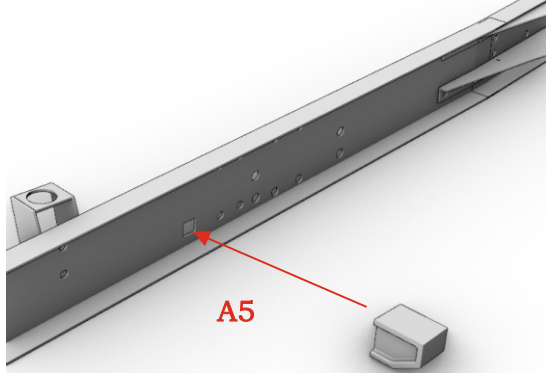
12.  PE-part #16



13. 




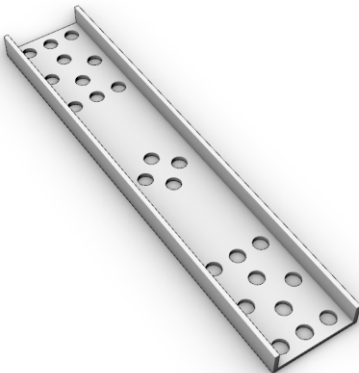
14. 



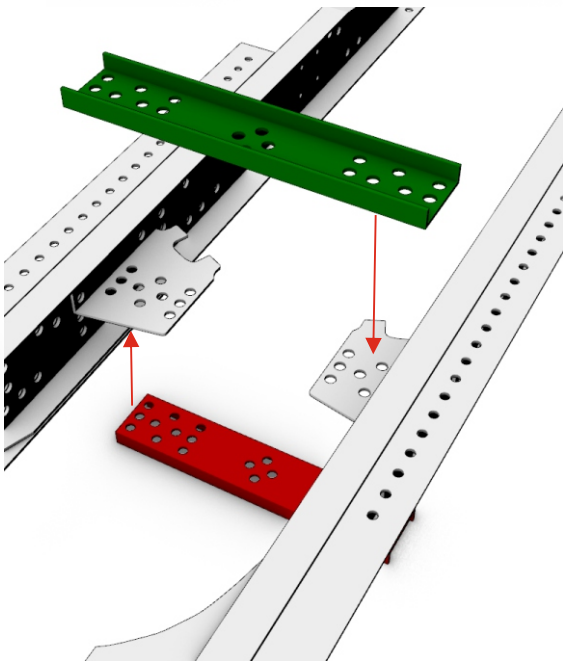
15.

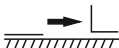
Repeat step 1-14 for right side.

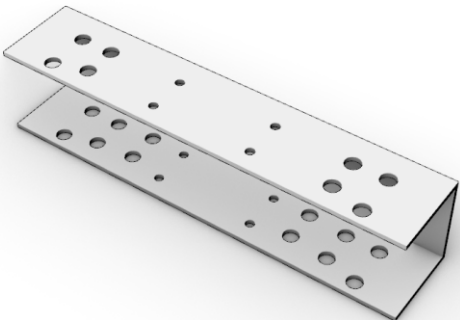
16.  x2
PE-part #13



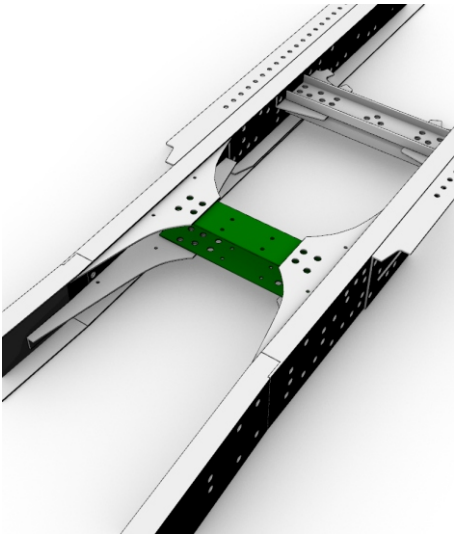
17. 




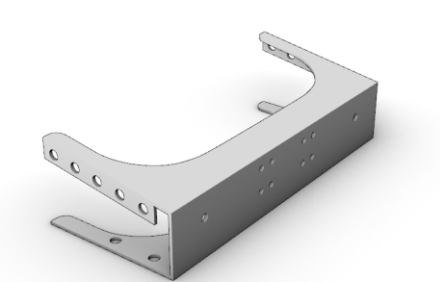
18.  PE-part #12




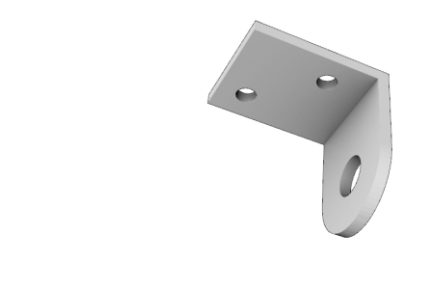
19. 



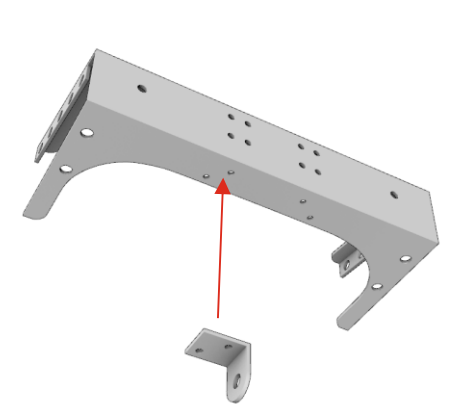
20. 
PE-part #9



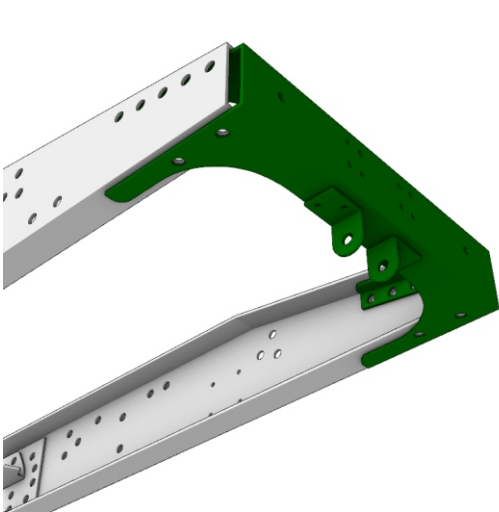
21.  x2
PE-part #20



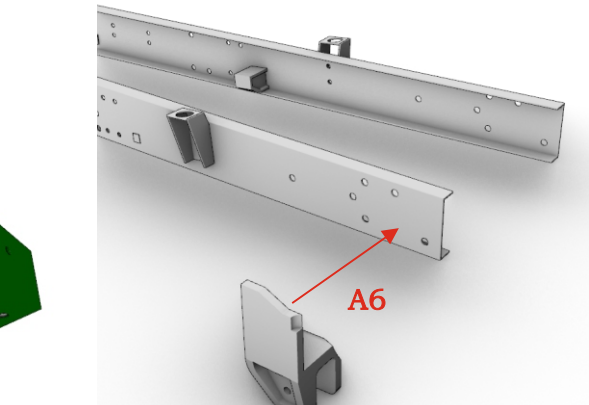
22.  x2



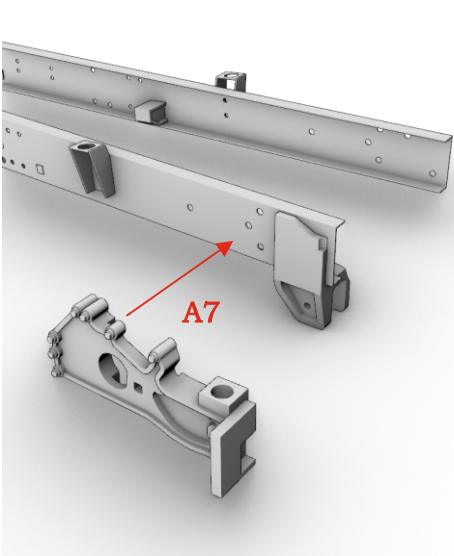
23. 



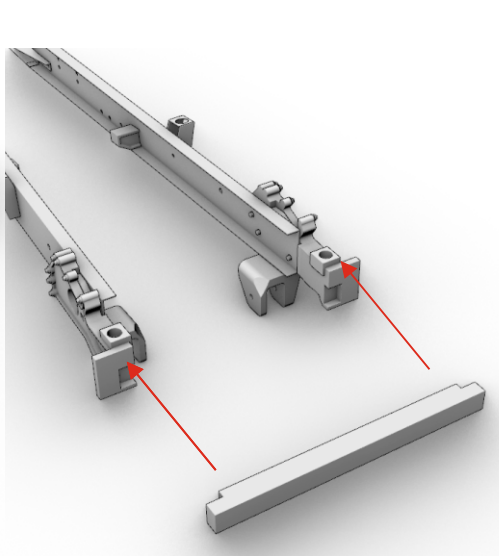
24.  x2



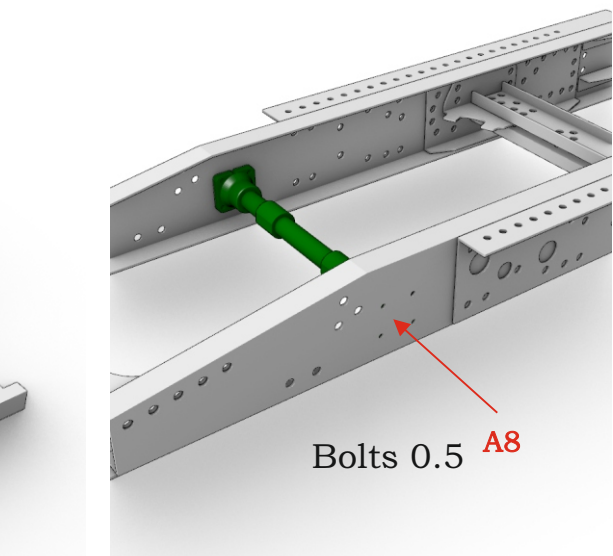
25.  x2



26. 

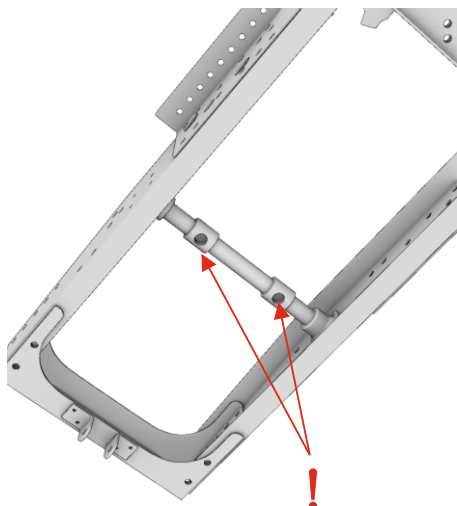



27.  x8

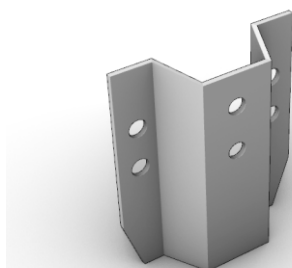



Dutch truck XG+ 4x2 (FT) chassis. Scale 1/24

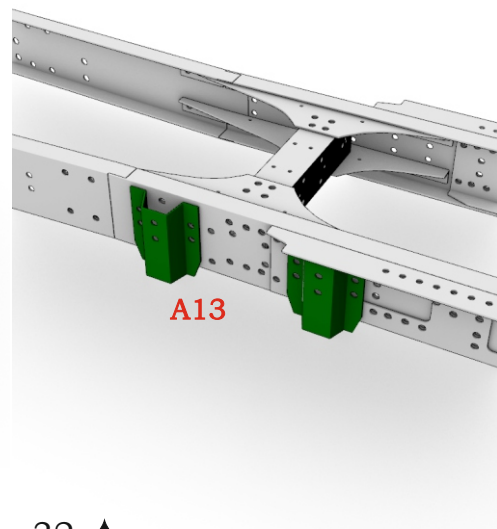
!



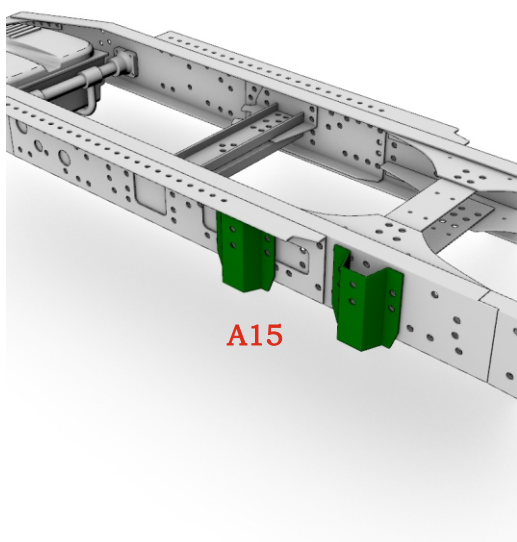
28.  x4
PE-part #18




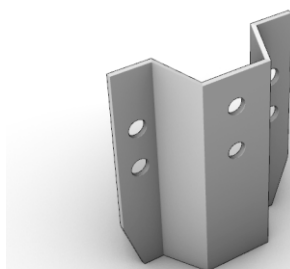
29. 



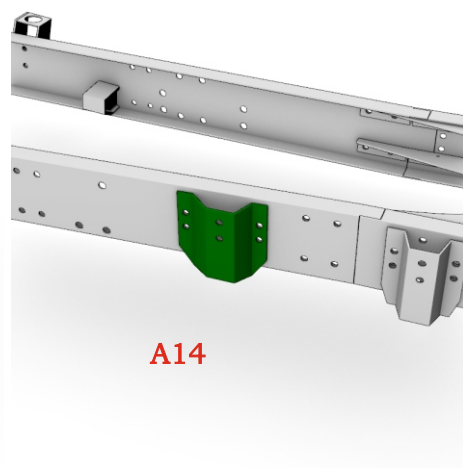
30. 

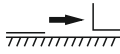


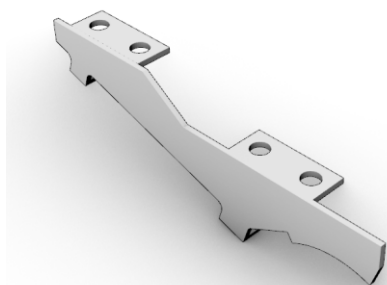
31.  x4
PE-part #19




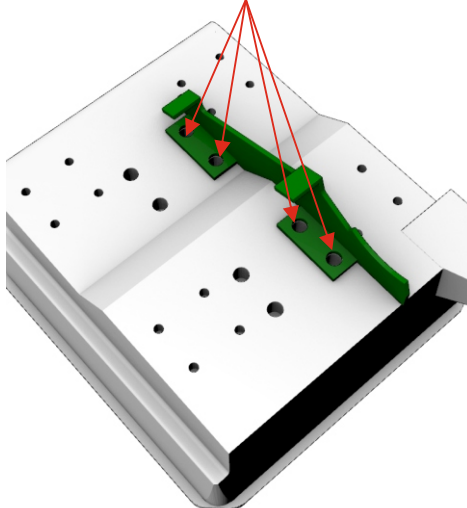
32. 



33.  x4
PE-part #21




34.  x4
Bolts 1 mm

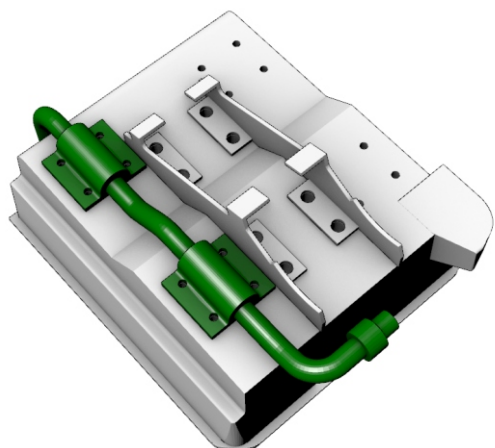



35.

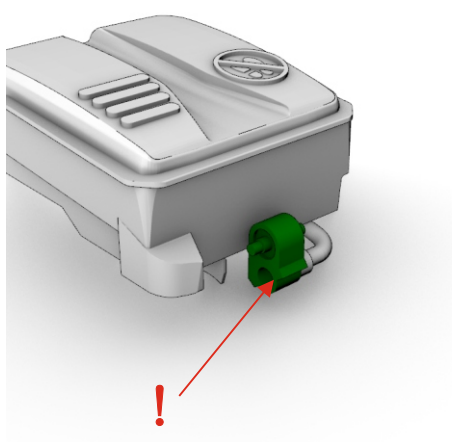
Repeat steps 33-34
for other side


Dutch truck XG+ 4x2 (FT) chassis. Scale 1/24

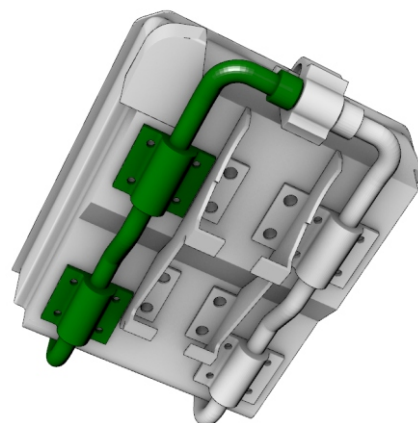
36. 



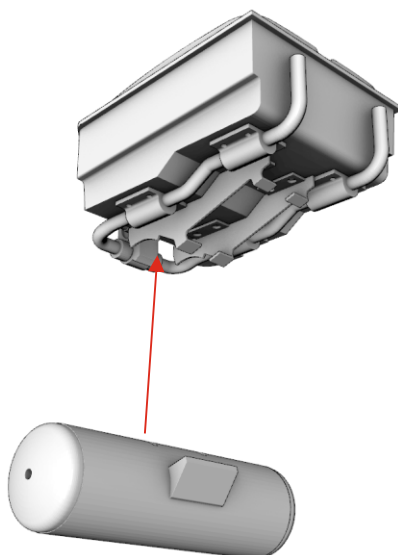
37. 



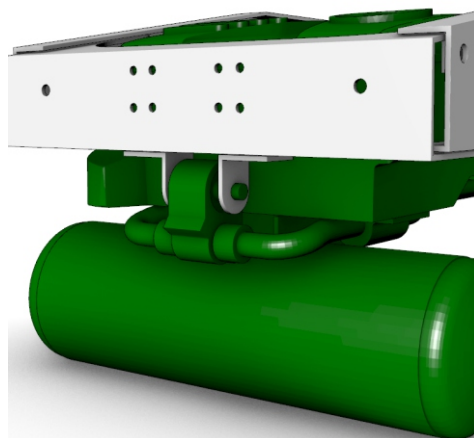
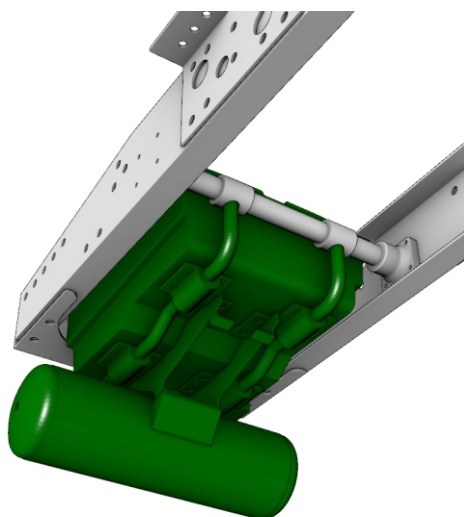
38. 



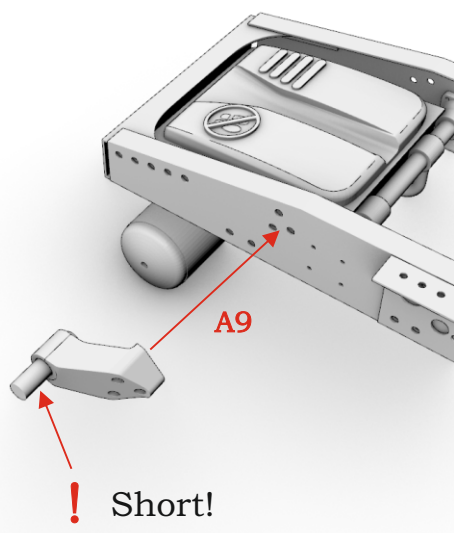
39. 



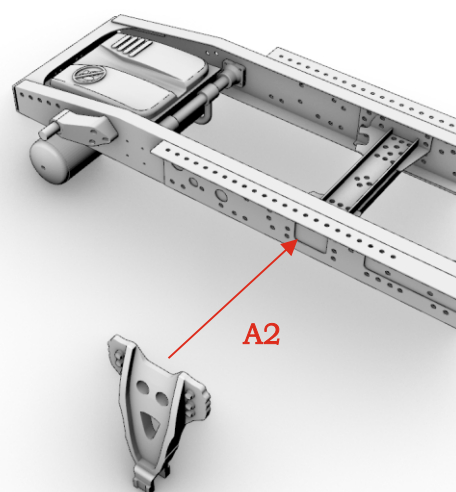
40. 



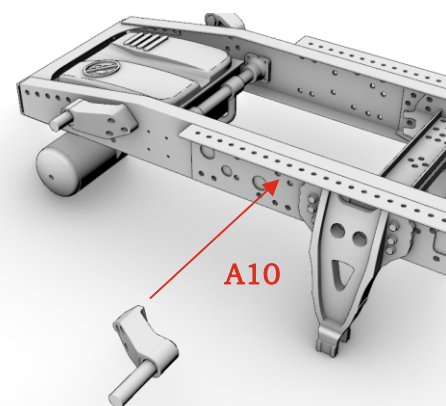
41.  x2



42.  x2

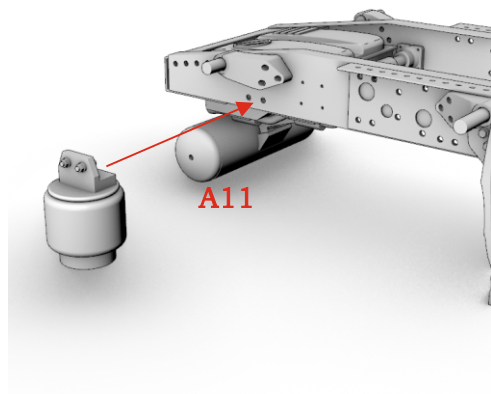


43.  x2

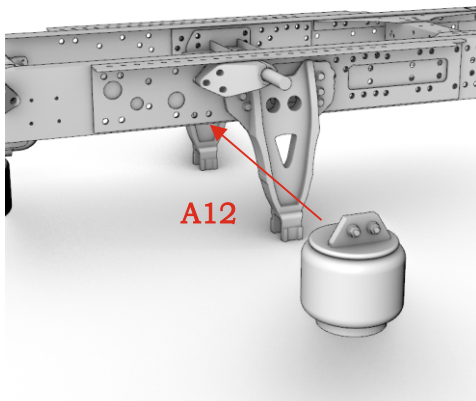


Dutch truck XG+ 4x2 (FT) chassis. Scale 1/24

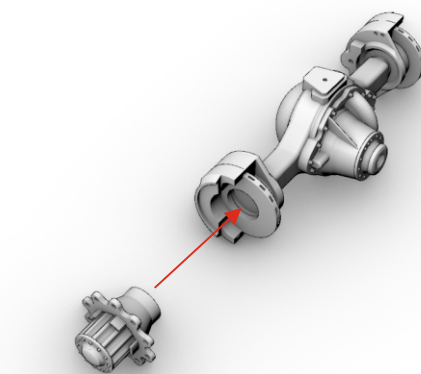
44. 🛢 x2



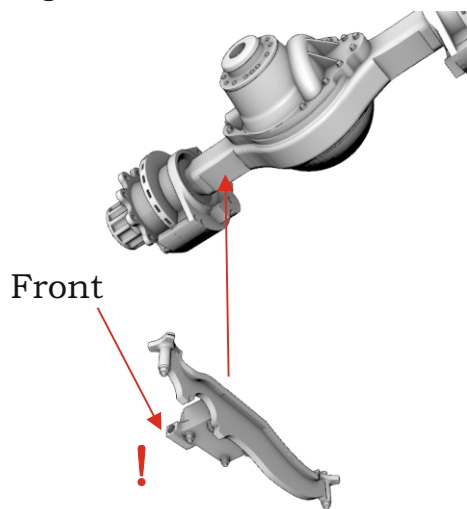
45. 🛢 x2



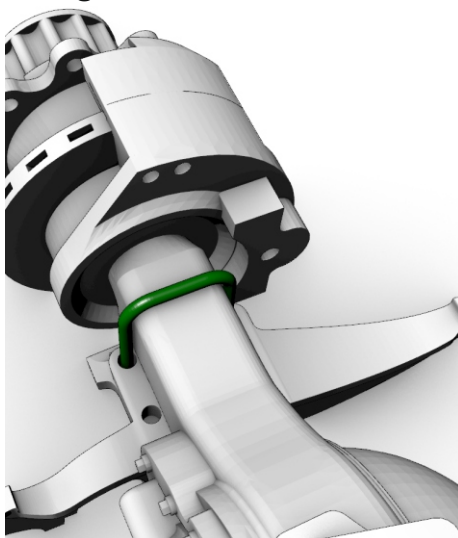
46. 🛢 x2



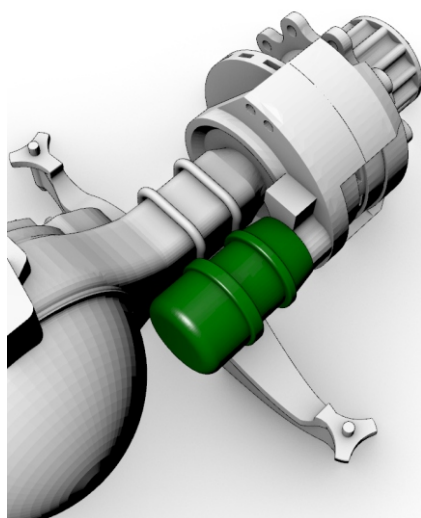
47. 🛢 x2



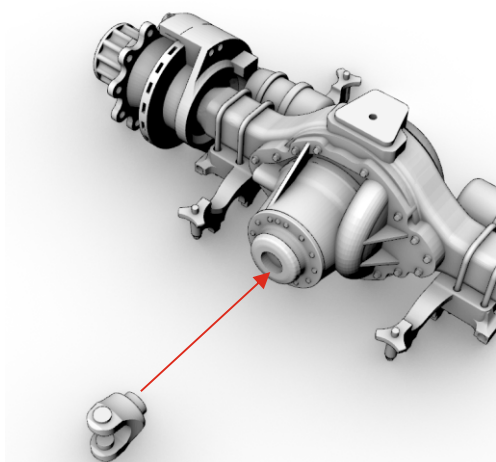
48. 🛢 x4



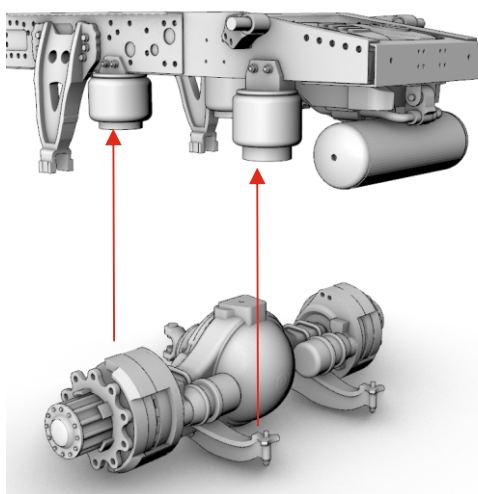
49. 🛢 x2



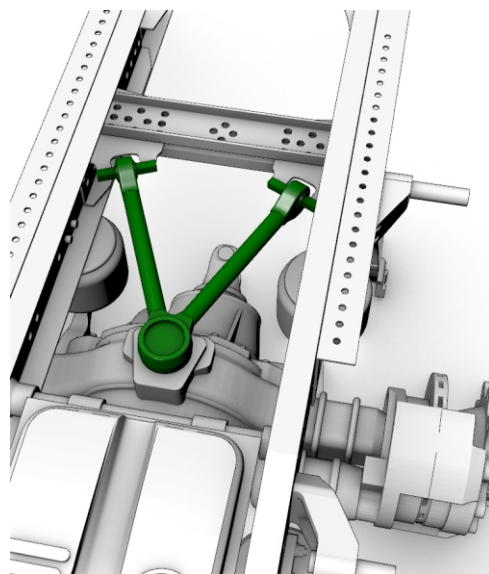
50. 🛢



51. 🛢

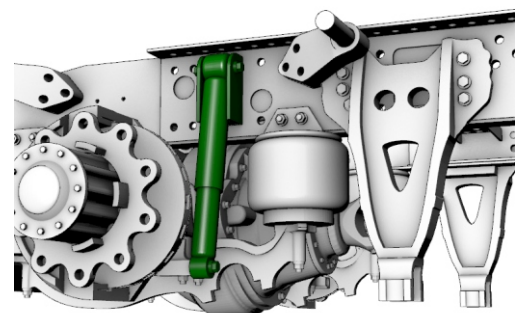


52. 🛢



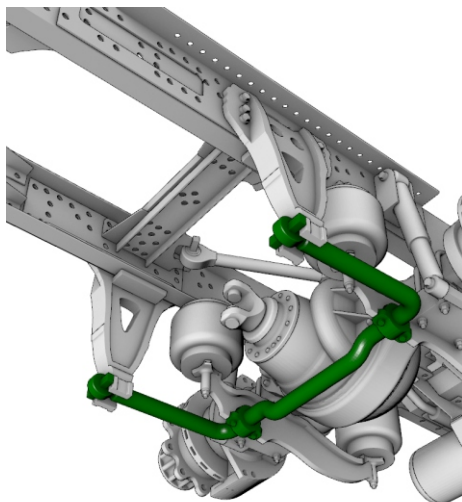
Dutch truck XG+ 4x2 (FT) chassis. Scale 1/24

53. 🟩 x2

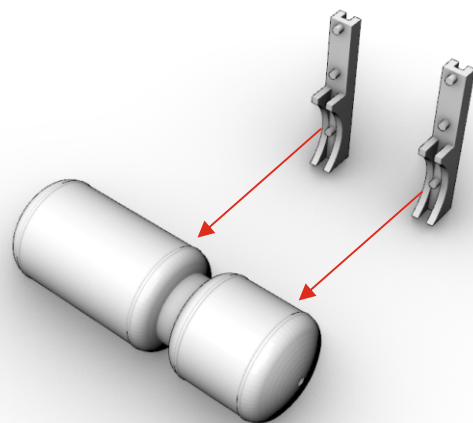


A16

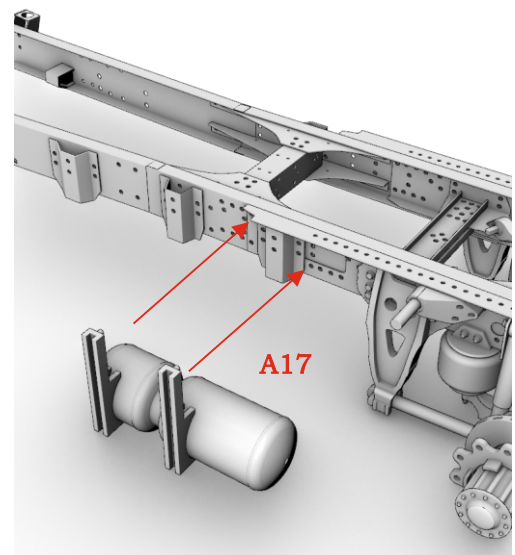
54. 🟩



55. 🟩

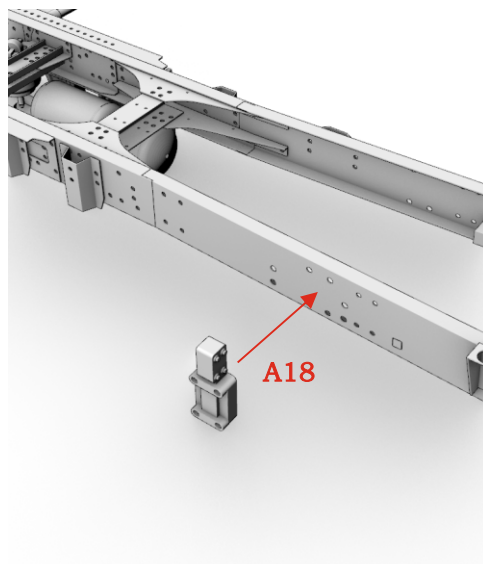


56. 🟩



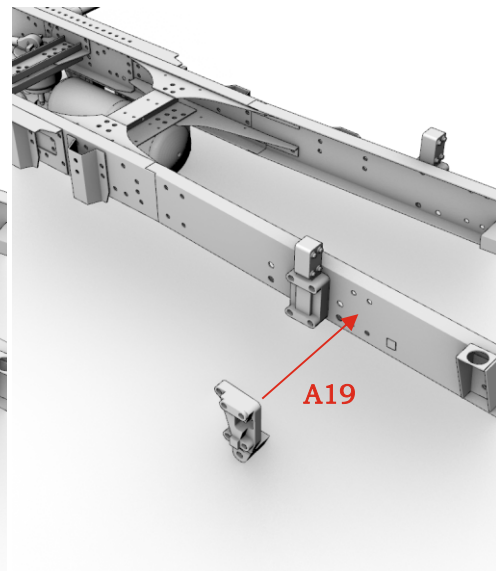
A17

57. 🟩 x2



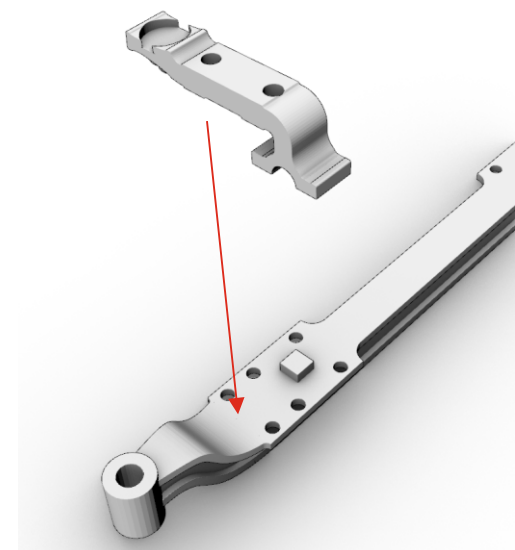
A18

58. 🟩 x2

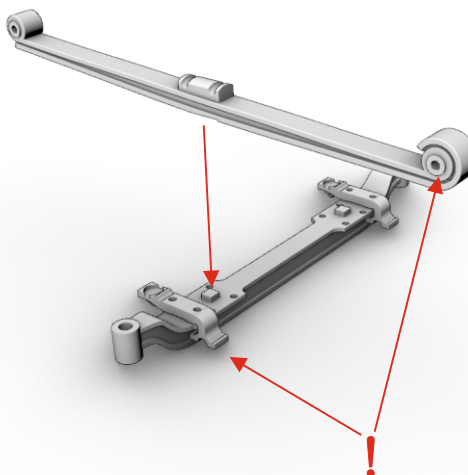


A19

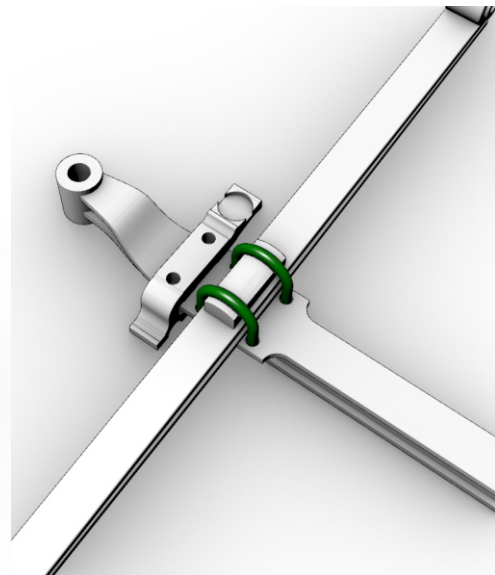
59. 🟩 x2



60. 🟩 x2



61. 🟩 x2

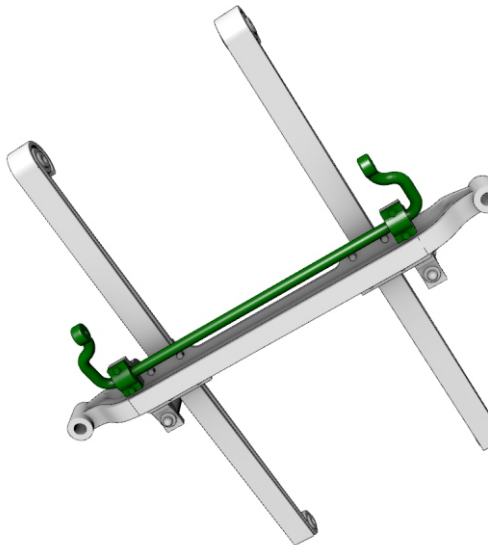


Dutch truck XG+ 4x2 (FT) chassis. Scale 1/24

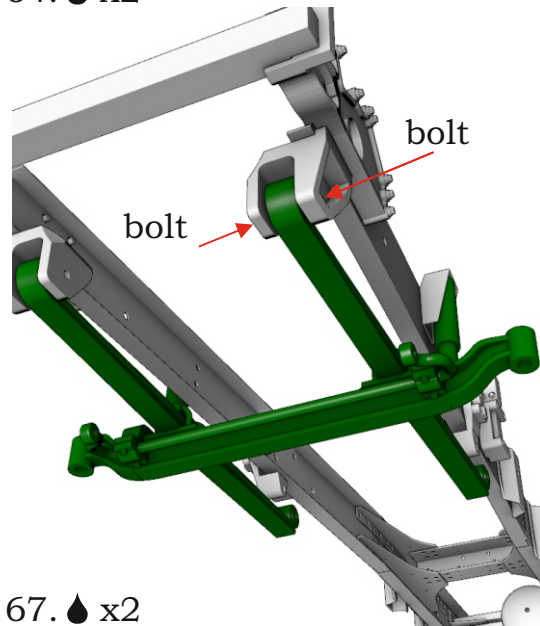
62. 🖐️ x2



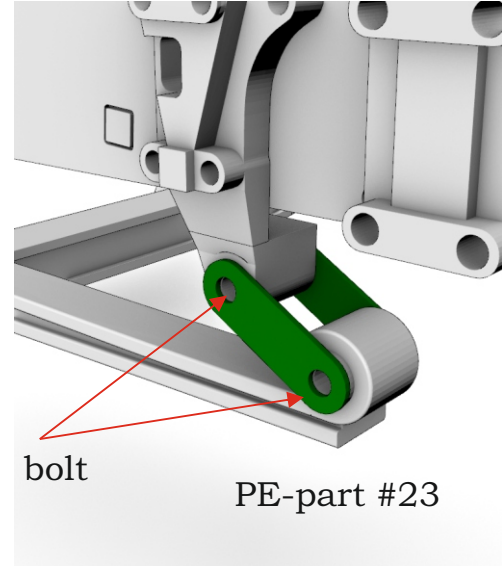
63. 🖐️



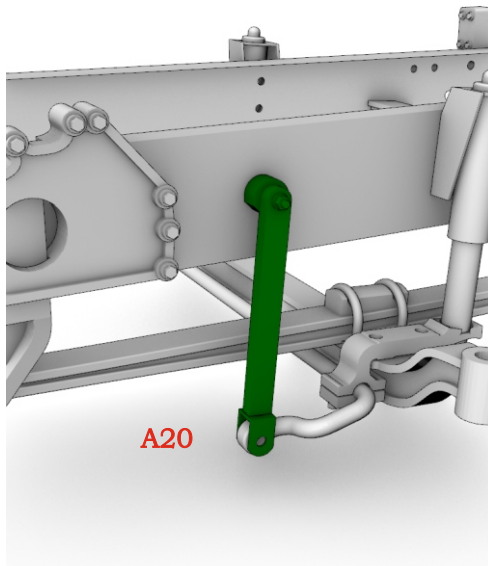
64. 🖐️ x2



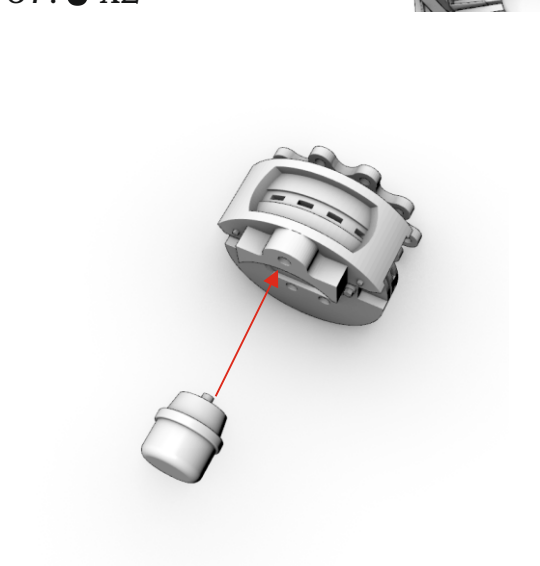
65. 🖐️ x2



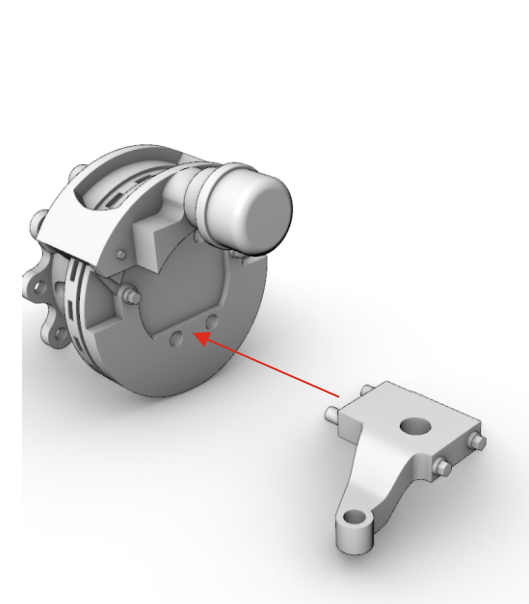
66. 🖐️ x2



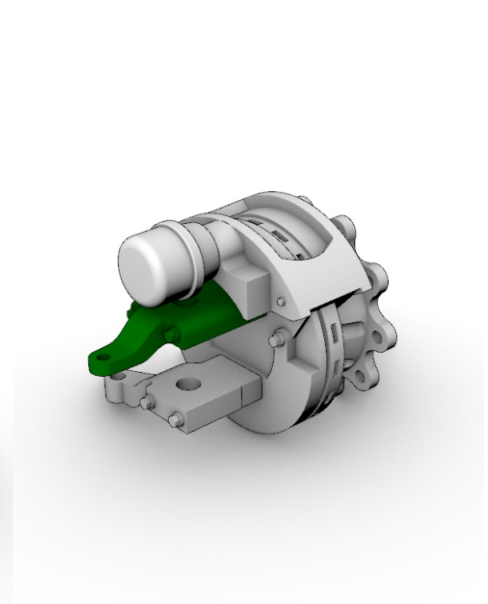
67. 🖐️ x2



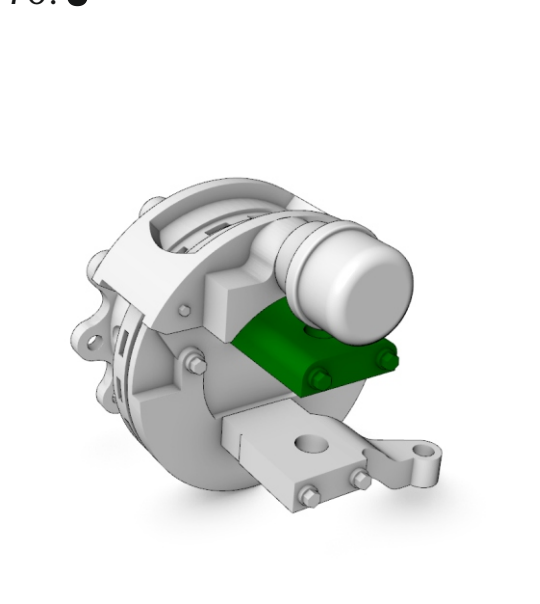
68. 🖐️ x2



69. 🖐️

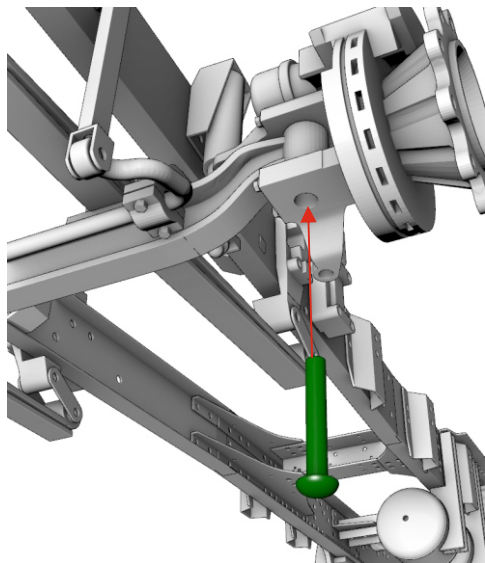


70. 🖐️

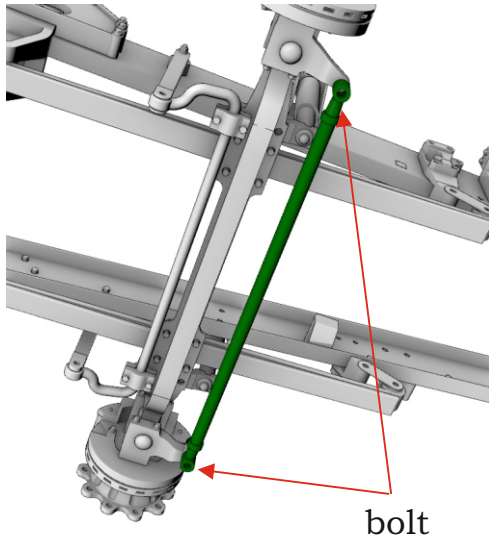


Dutch truck XG+ 4x2 (FT) chassis. Scale 1/24

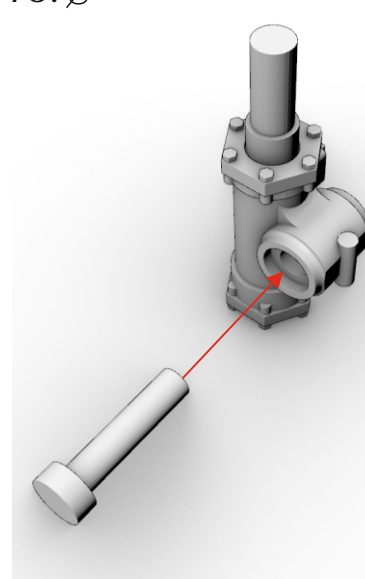
71. 🟩 x2



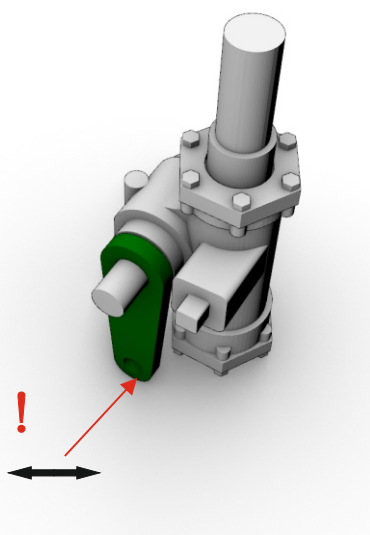
72. 🟩



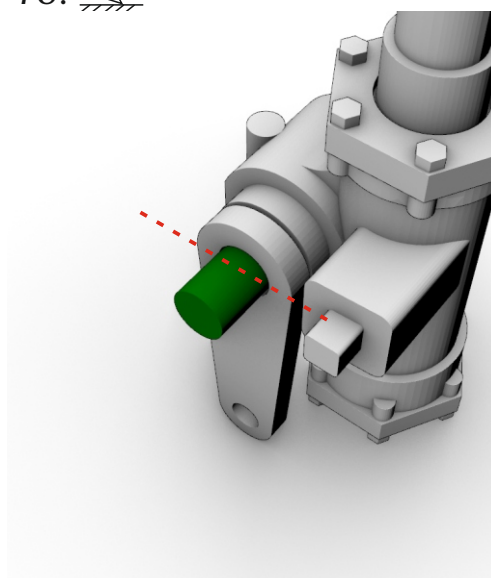
73. ⌀



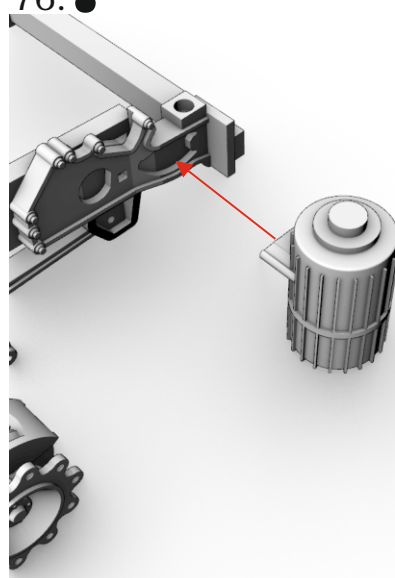
74. 🟩



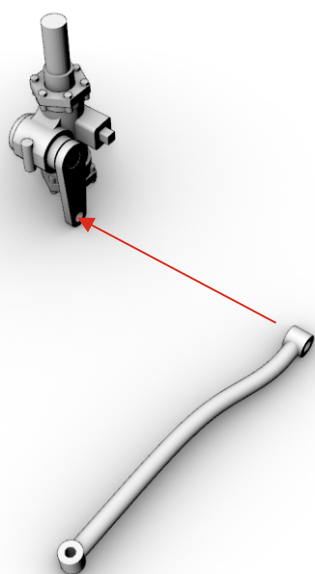
75. 🏠



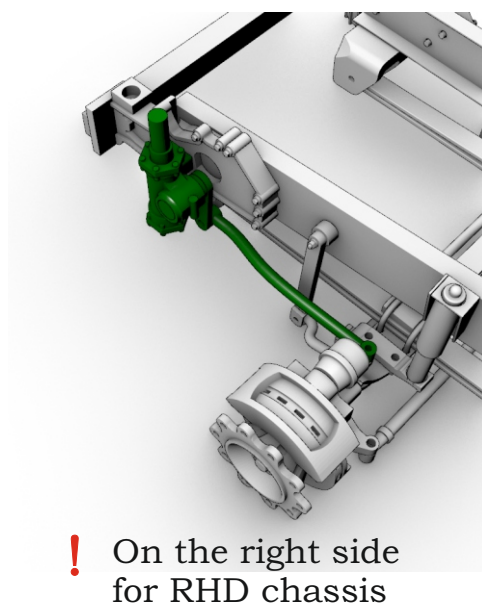
76. 🟩



77. 🟩



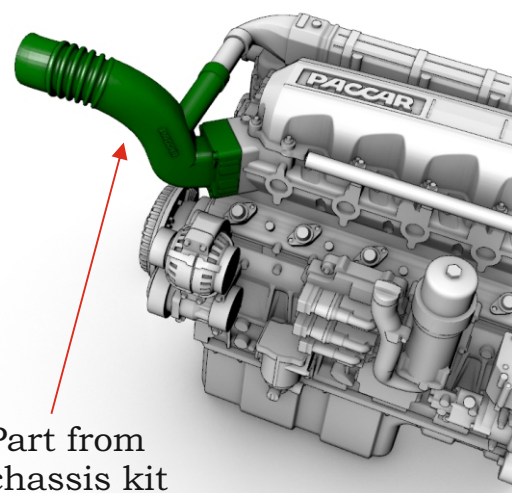
78. 🟩



! On the right side for RHD chassis

79. 🟩

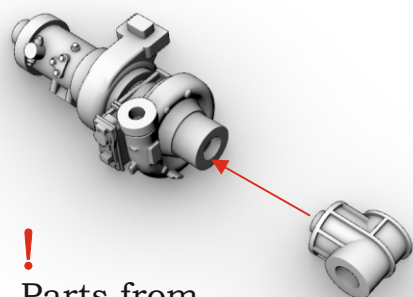
A&N Model Trucks
MX-13 engine shown



! Part from chassis kit

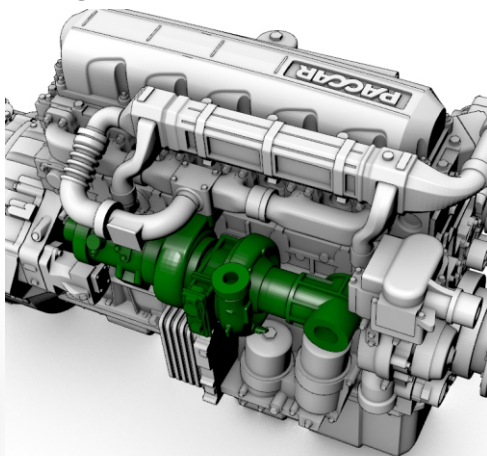
Dutch truck XG+ 4x2 (FT) chassis. Scale 1/24

80. 🖐

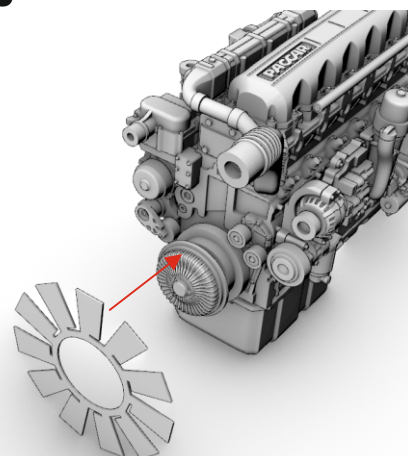


!
Parts from
chassis kit

81. 🖐

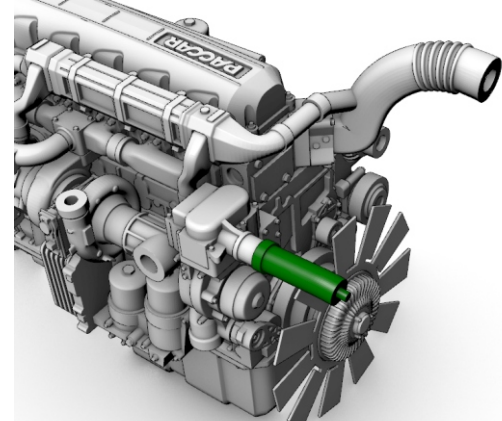


82. 🖐

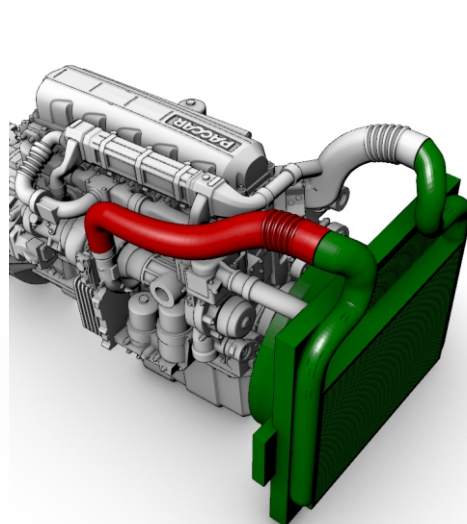


PE-part #25

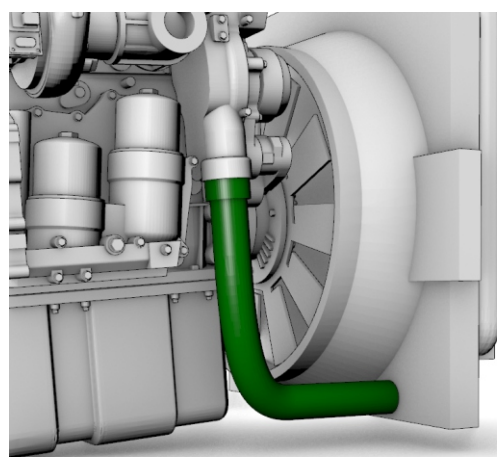
83. 🖐



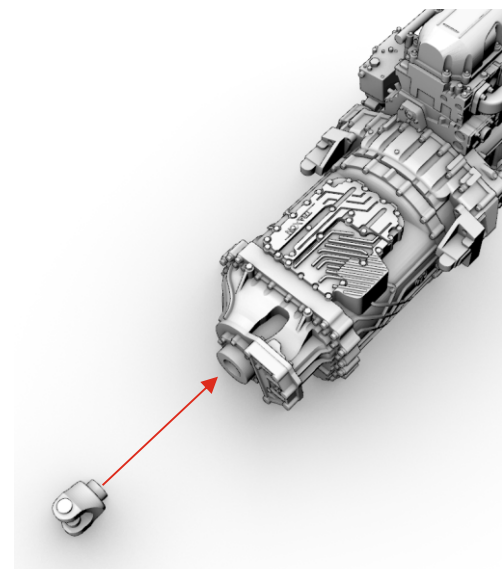
84. 🖐



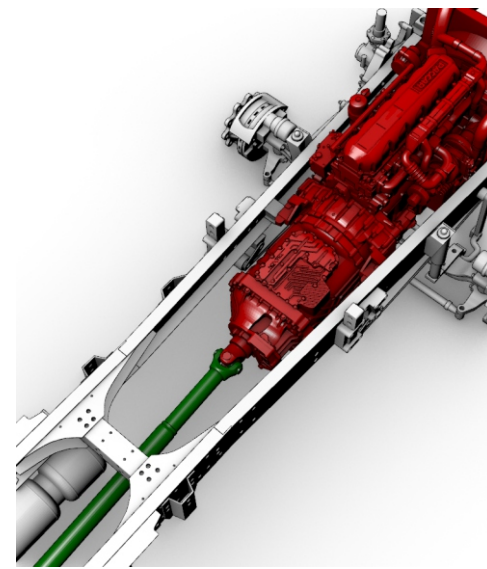
85. 🖐



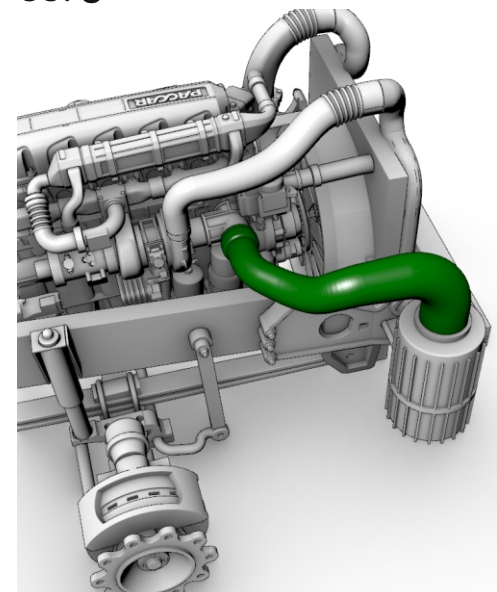
86. 🖐



87. 🖐

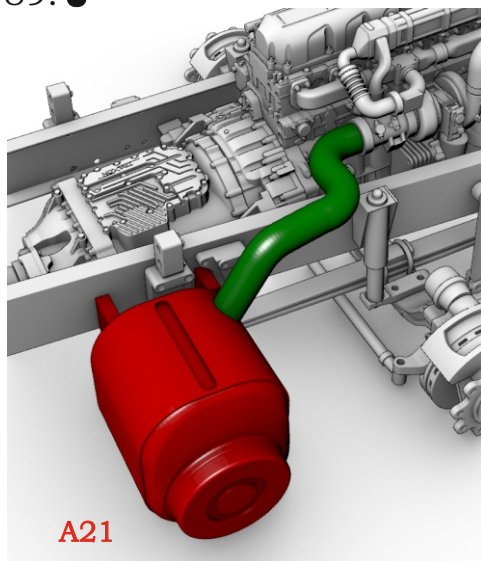


88. 🖐

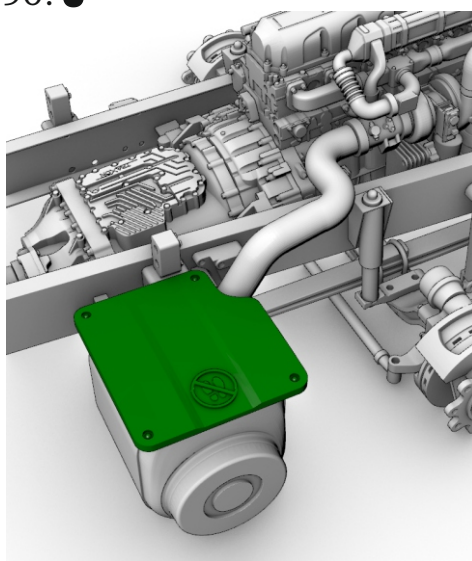


Dutch truck XG+ 4x2 (FT) chassis. Scale 1/24

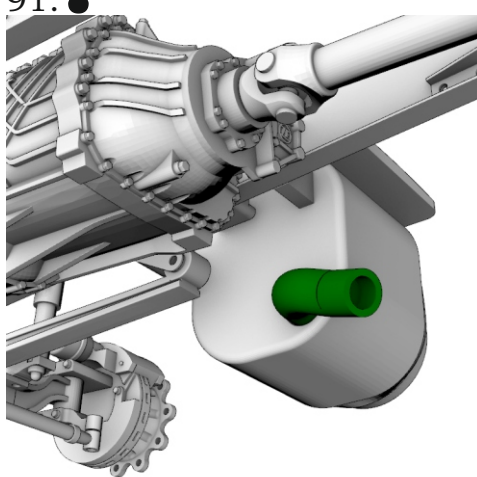
89. 滴



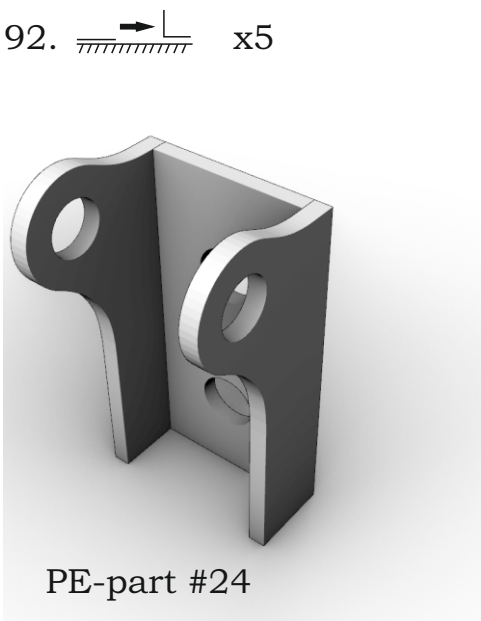
90. 滴



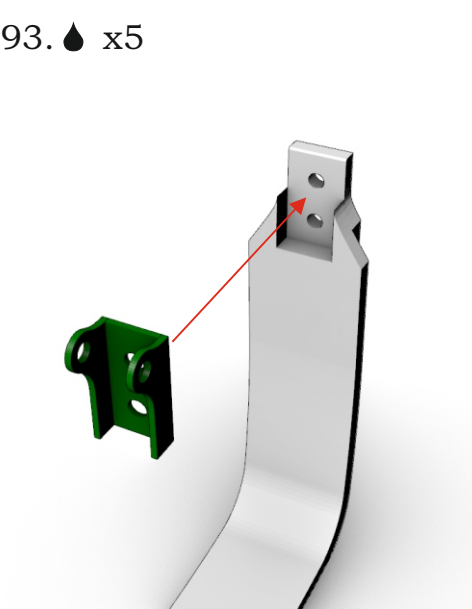
91. 滴



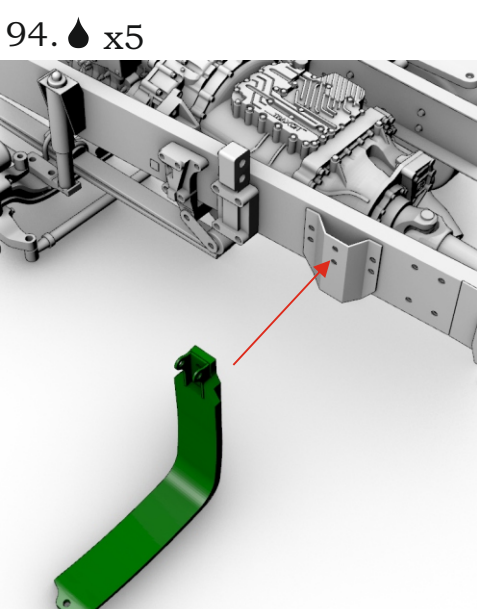
92. ➡ x5



93. 滴 x5



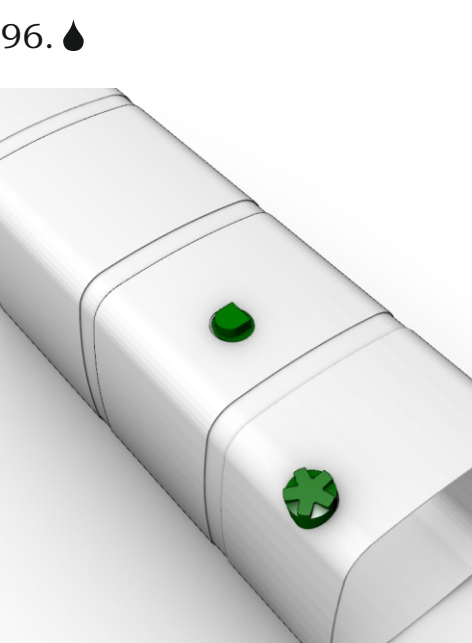
94. 滴 x5



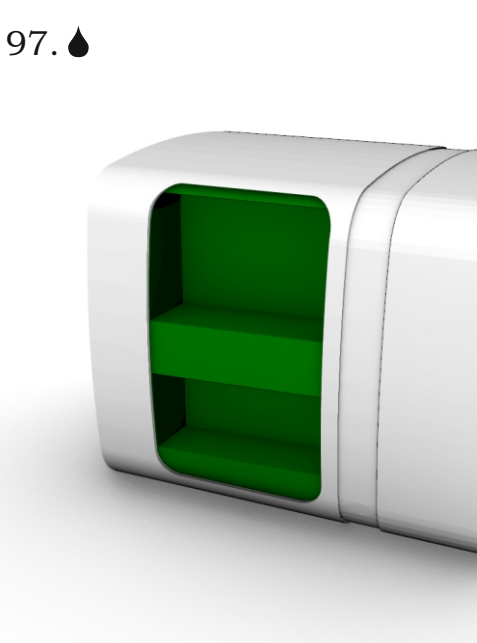
95. ➡



96. 滴

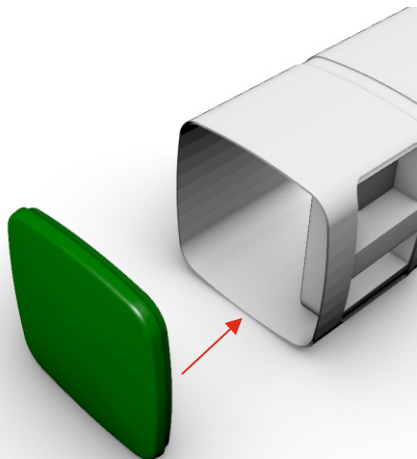


97. 滴



Dutch truck XG+ 4x2 (FT) chassis. Scale 1/24

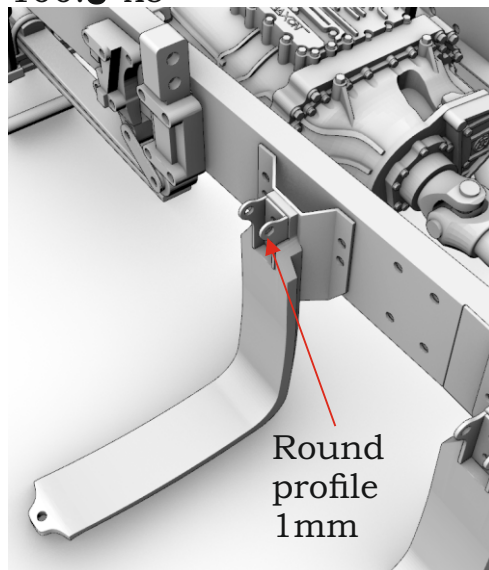
98. 🟩 x2



99.

Repeat steps 95-98
for 2nd fuel tank

100. 🟩 x5

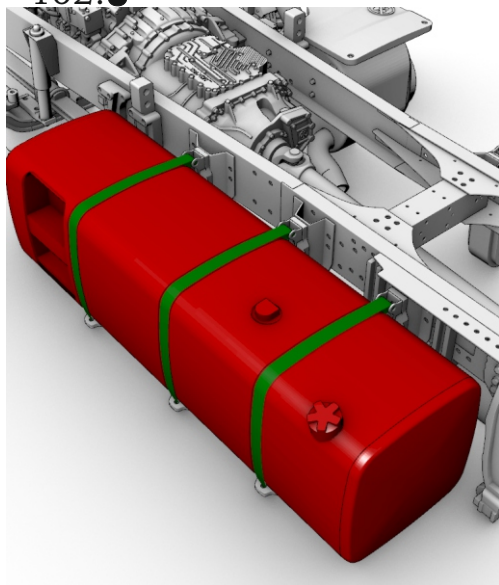


101. ➡️ x5

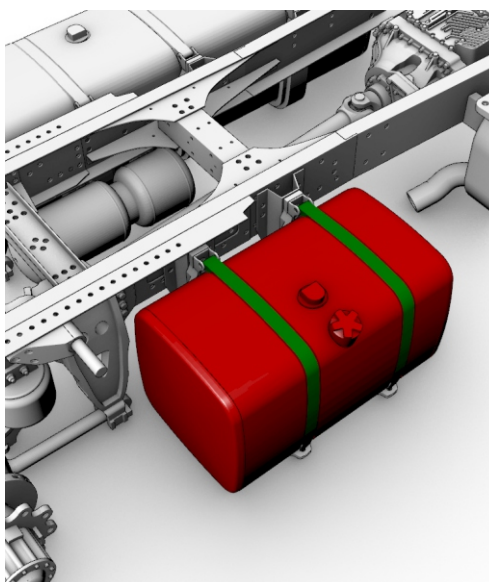
PE-part #28



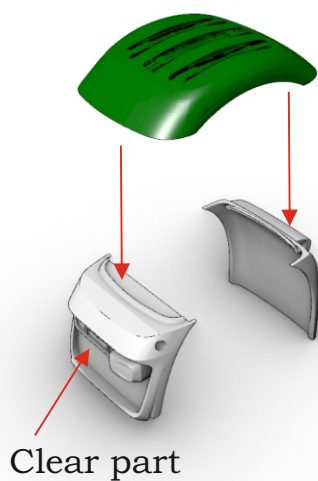
102. 🟩



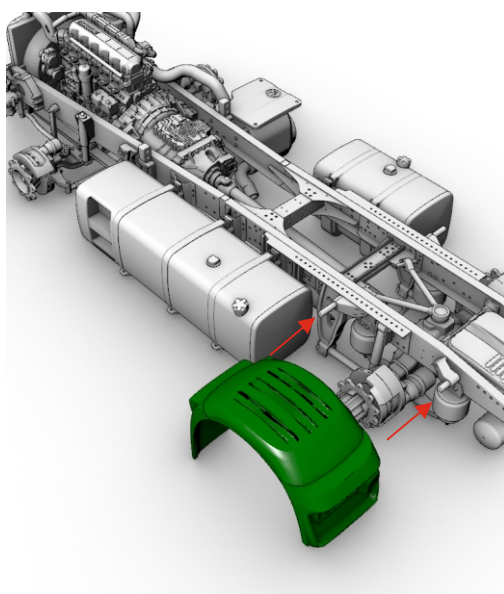
103. 🟩



104. 🟩 x2



105. 🟩 x2




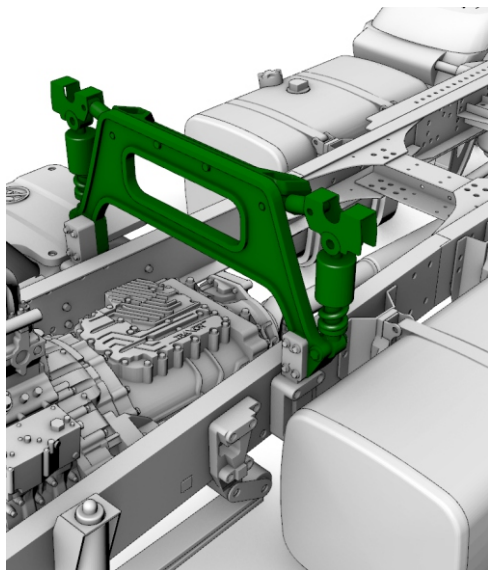
106.


Proceed on steps 65-72
of Dutch truck XG+
assembling instruction.

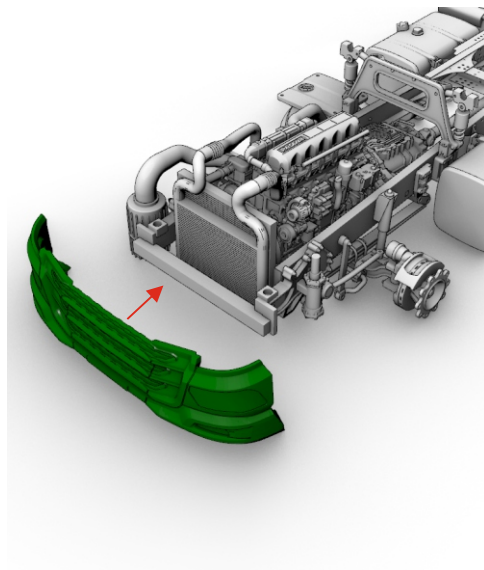
If you plan to use side skirts,
you have to use front
mudguards from chassis kit,

Dutch truck XG+ 4x2 (FT) chassis. Scale 1/24

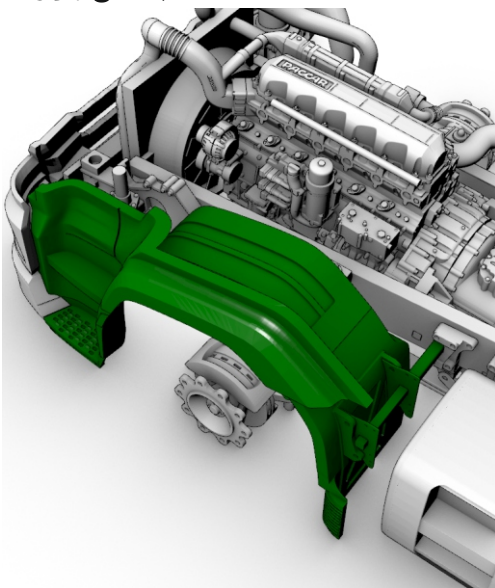
107. 



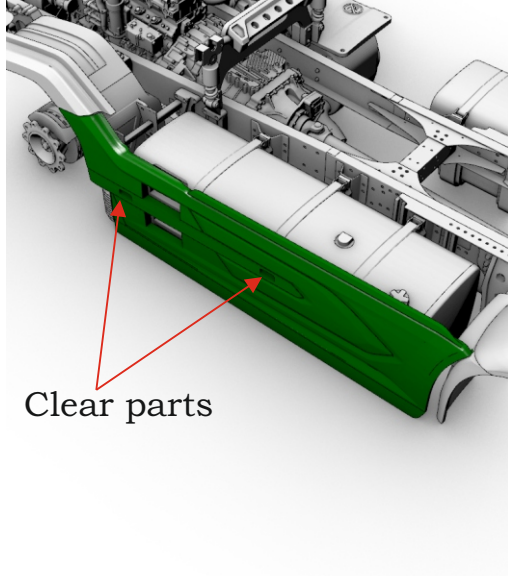
108. 




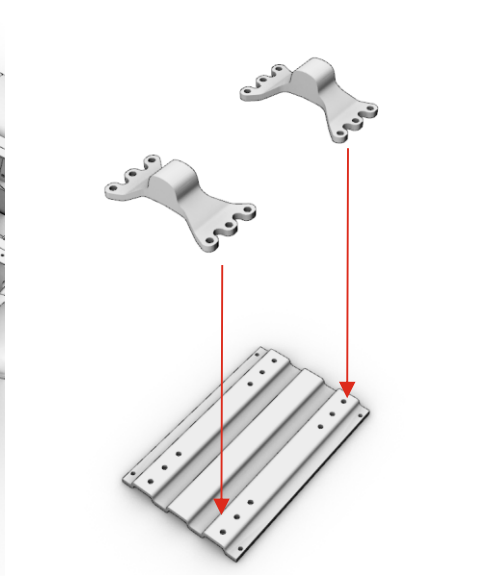
109.  x2



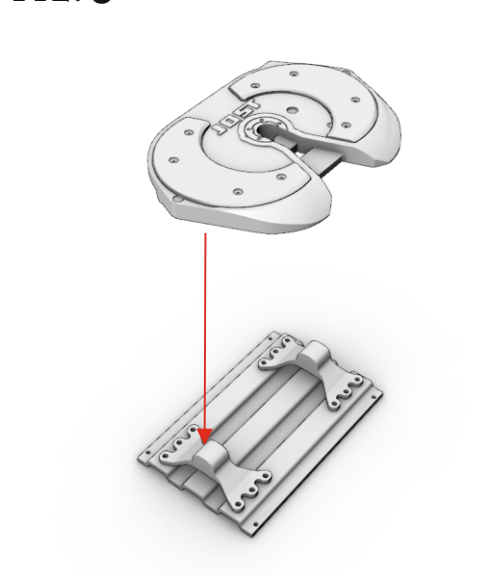
110.  x2




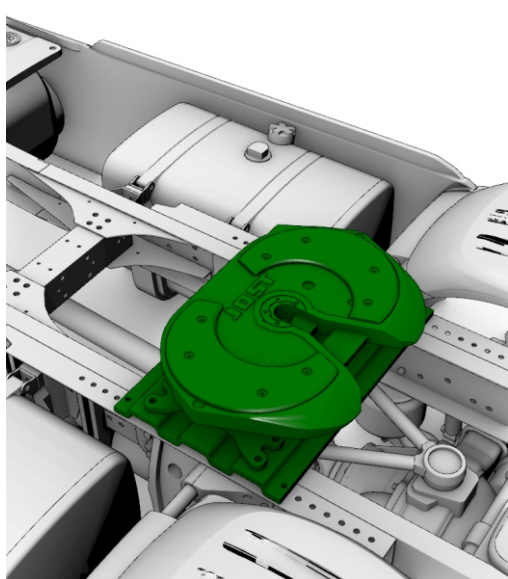
111. 




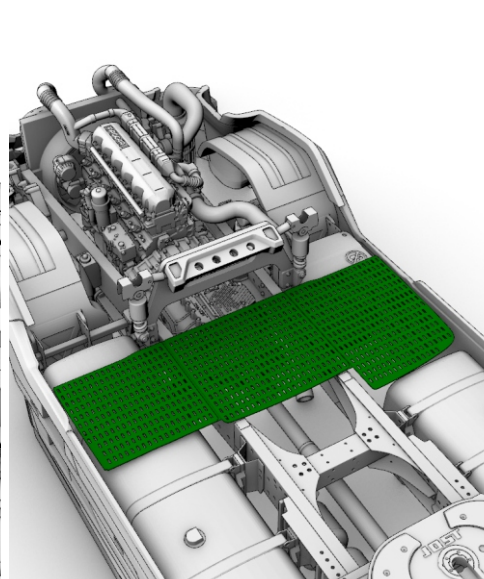
112. 




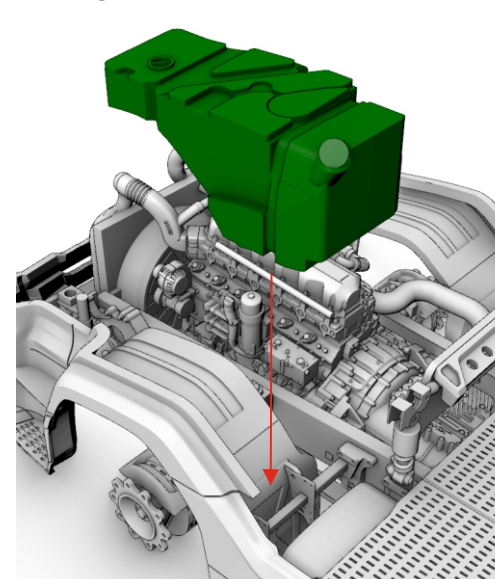
113. 



114. 



115. 

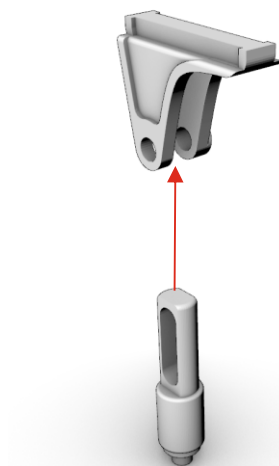


Dutch truck XG+ 4x2 (FT) chassis. Scale 1/24

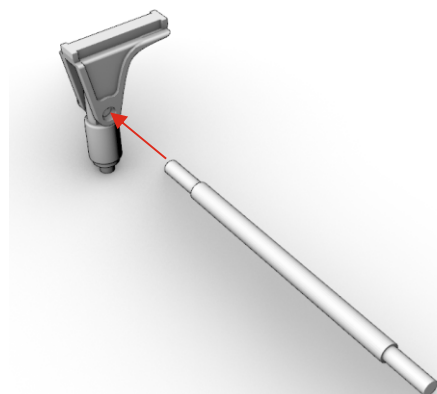
!

If you don't plan to make tilting cab, skip next steps and proceed on step #80 of Dutch truck XG+ assembling instruction.

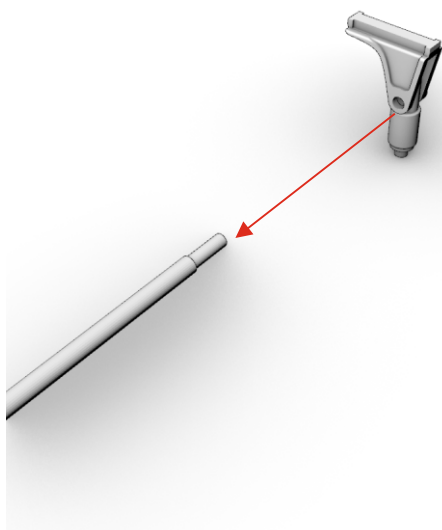
116. ⚡ x2



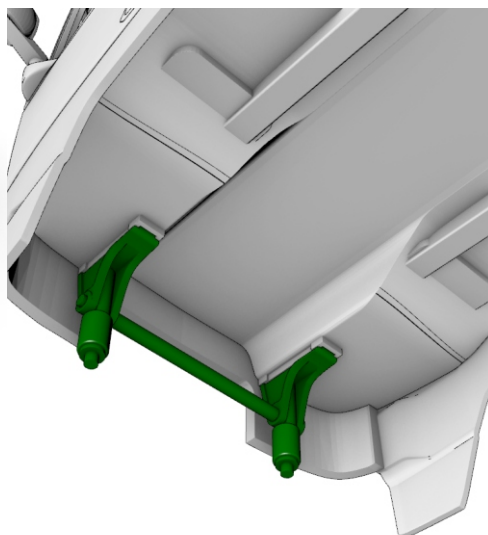
117. ⚡



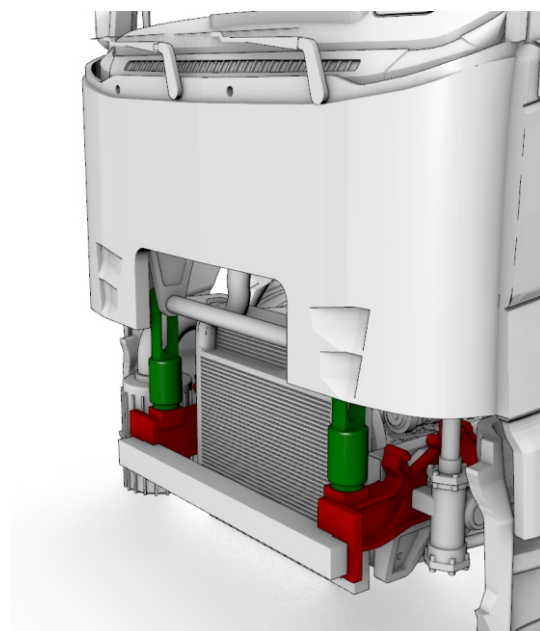
118. ⚡



119. ⬇



120. ⬇



Proceed on step #81 of Dutch truck XG+ assembling instruction.