

# A&N Model Trucks



## DUTCH TRUCK XG+ Multimedia kit, scale 1/24

Made in Latvia  
© 2024 A&N Model Trucks

Warning!

Read carefully this instruction and please follow it during assembling, otherwise you could face problems with assembling the model.

Photo-etched parts have sharp edges, please be careful.

This model kit contains very small parts and is not suitable for children. THIS IS NOT A TOY!

This kit requires chassis - photo-etched chassis by A&N Model Trucks or Italeri DAF XF105 recommended.

---

Symbols:

 - glue parts;

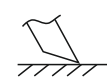
 - do not glue parts;

 - bend parts;

 - attention;

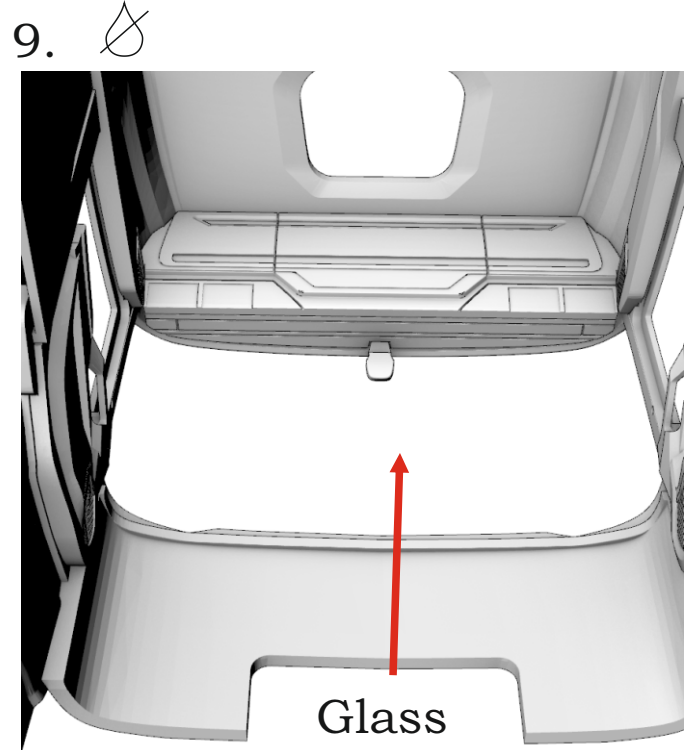
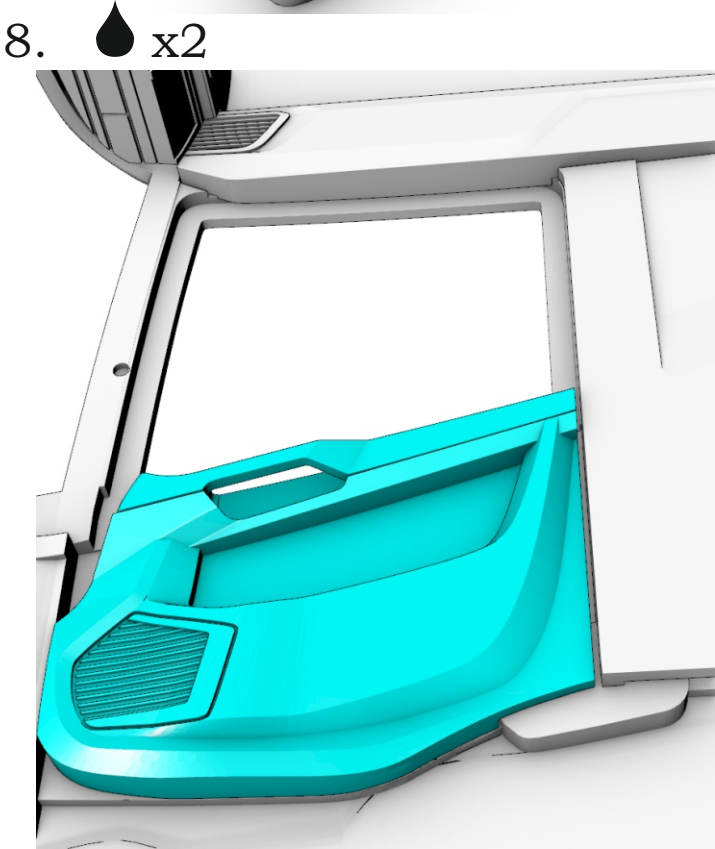
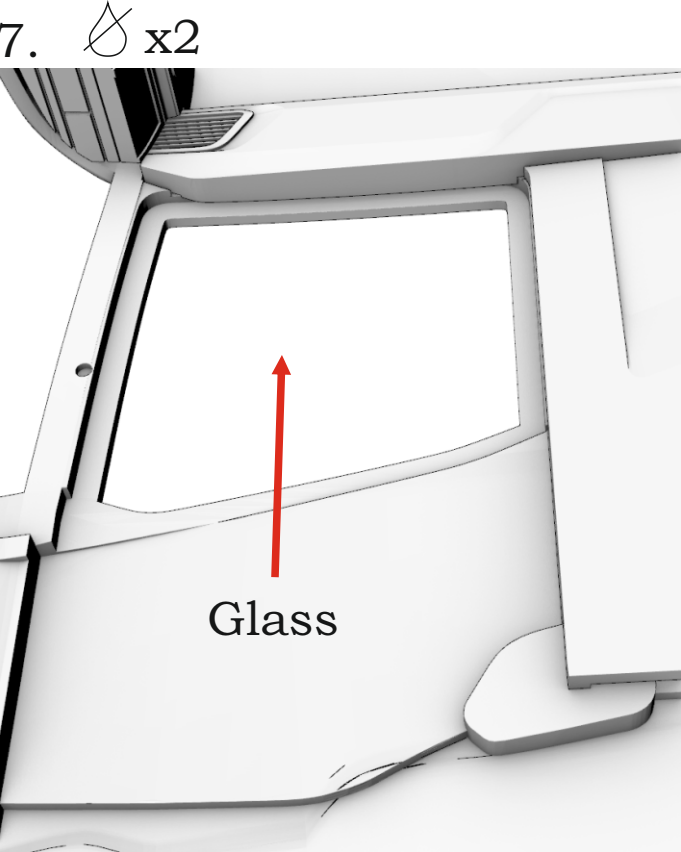
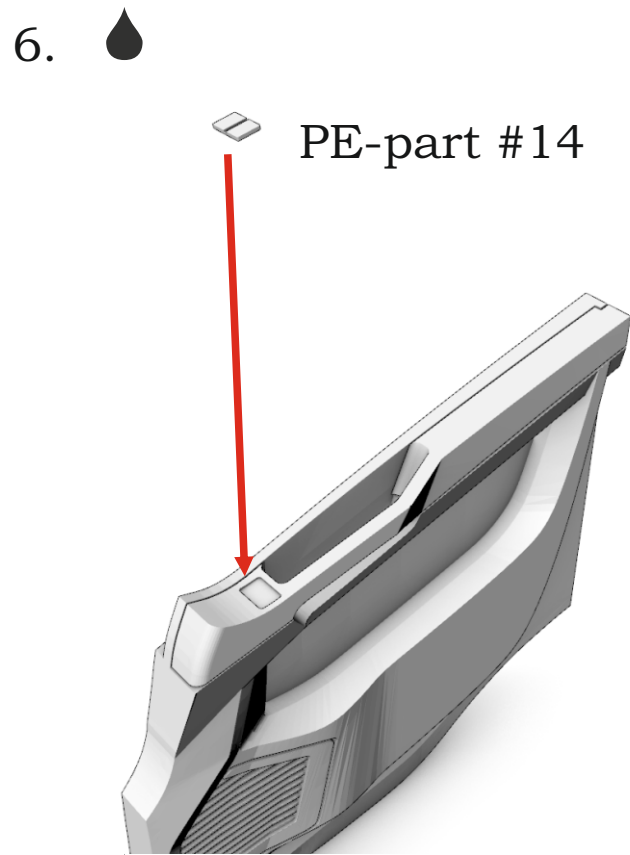
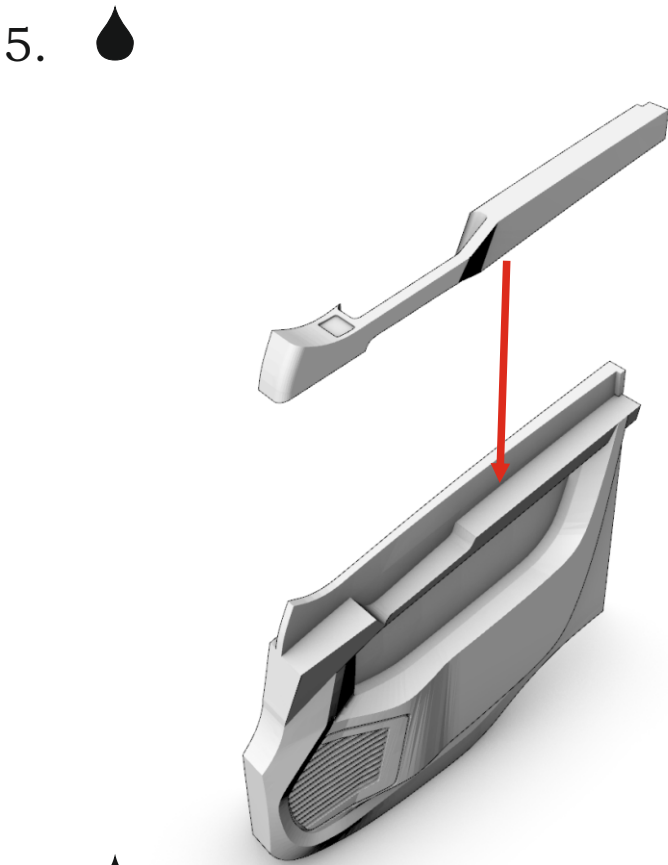
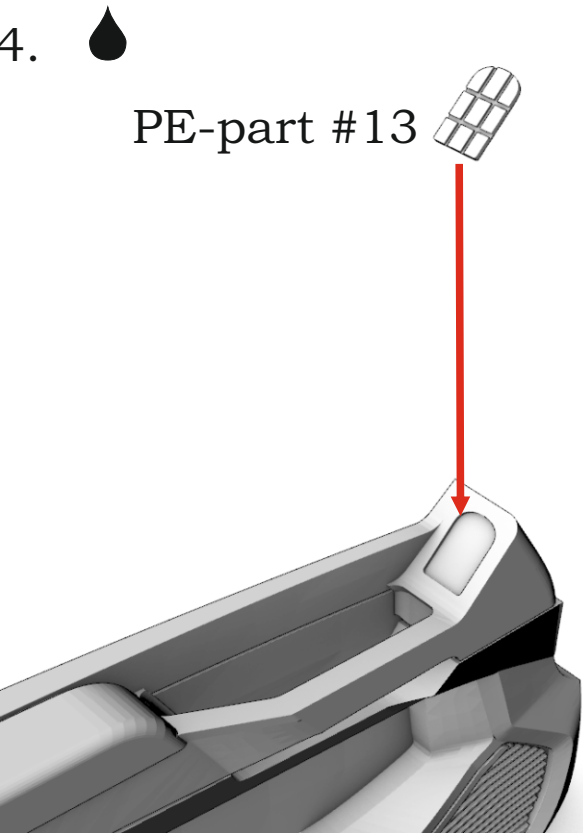
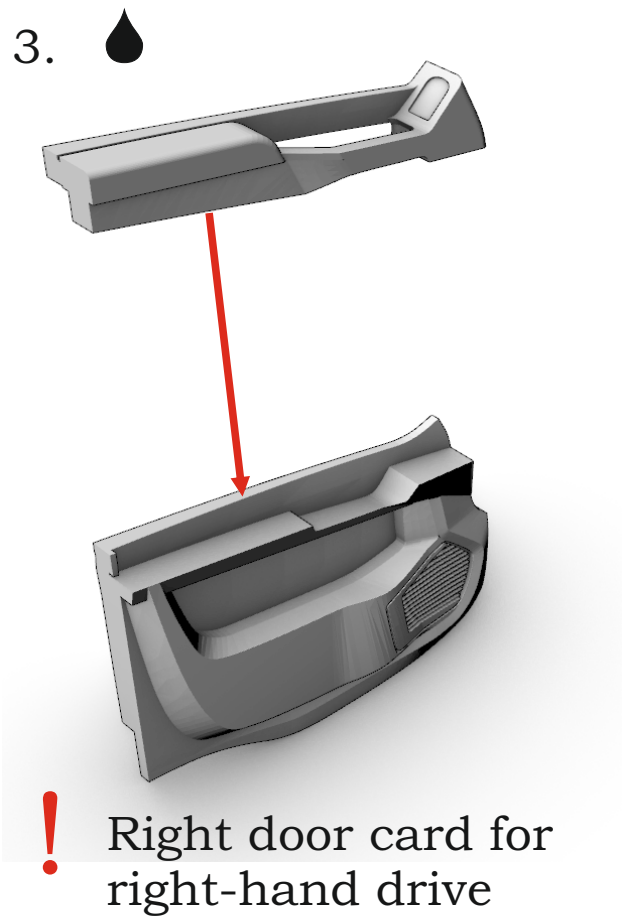
 - moving parts;

 - your choice;

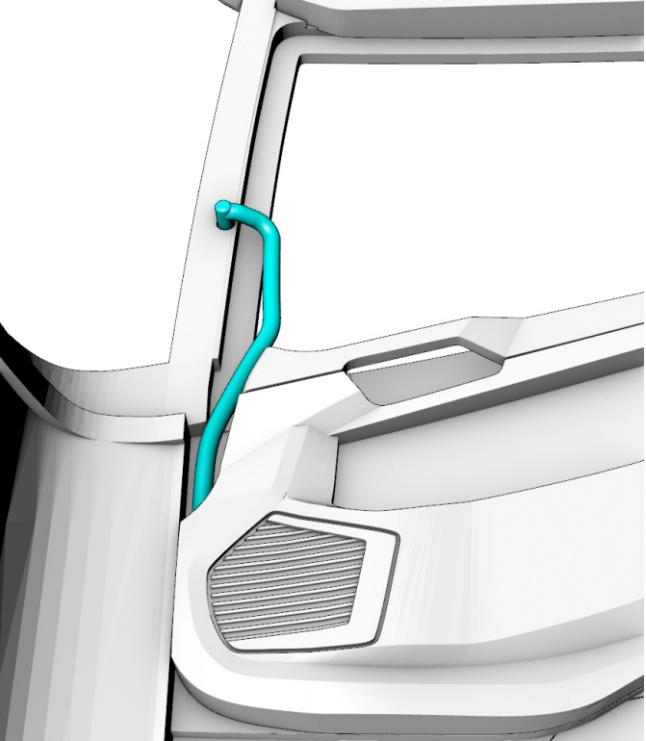
 - cut;


 - drill;

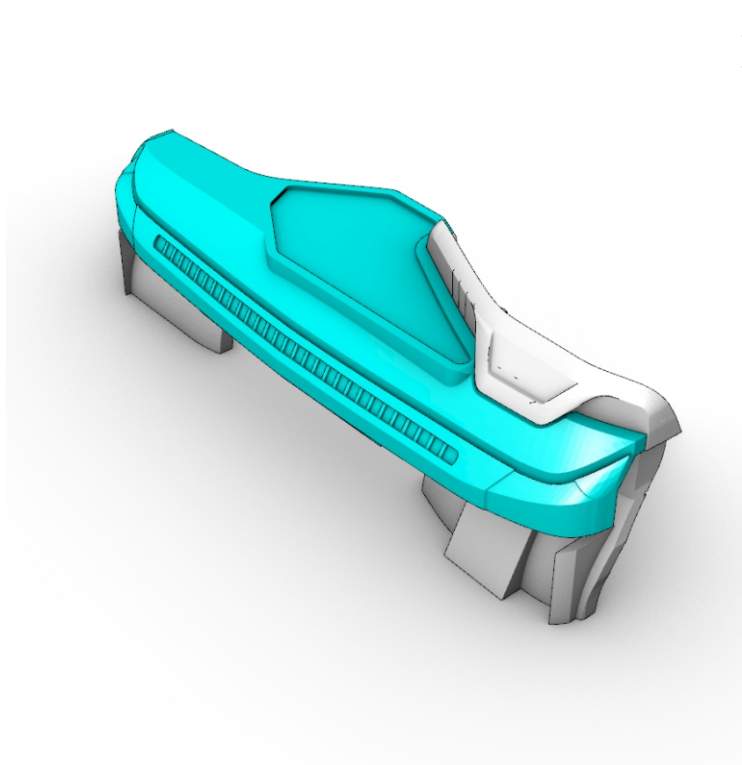




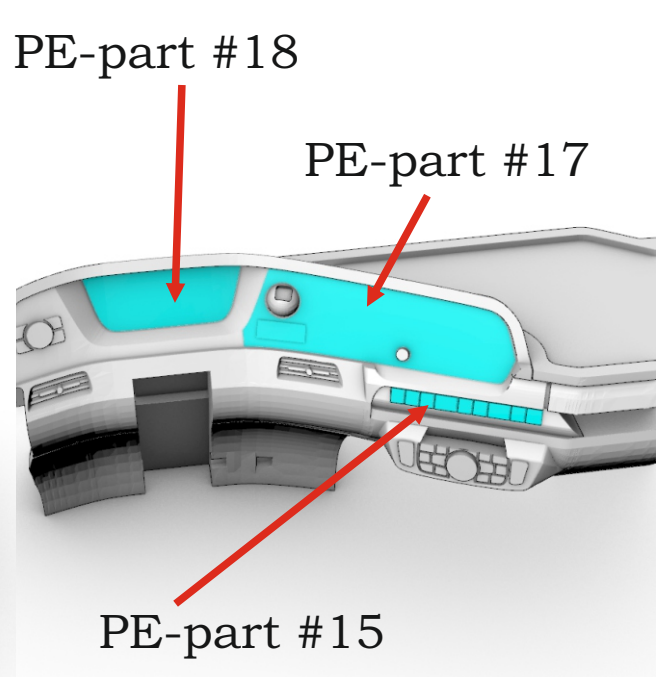
10.  x2



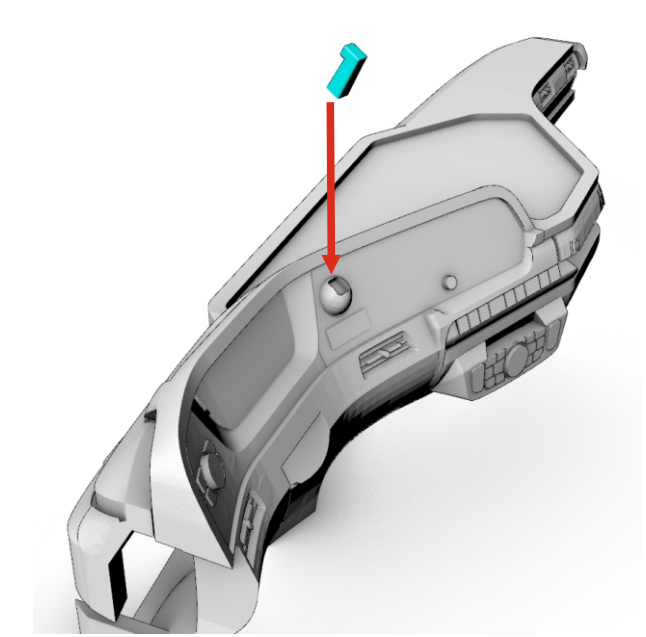
11. 



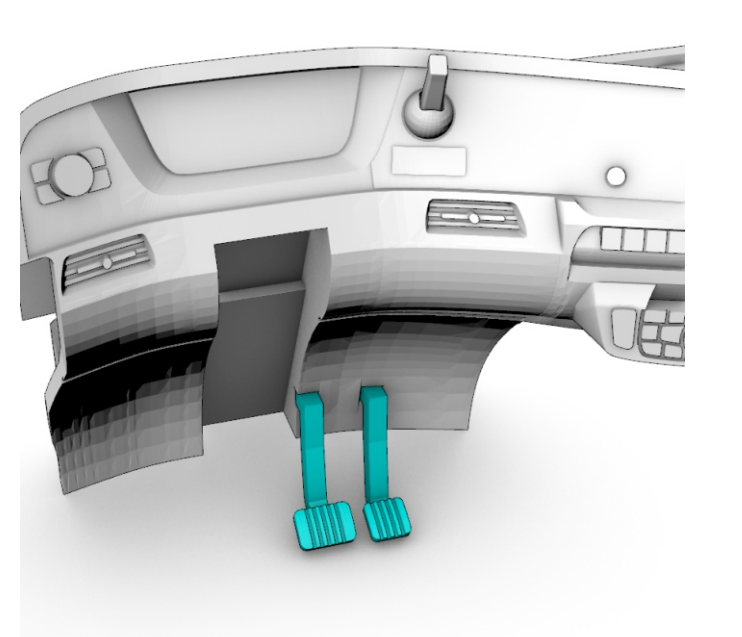
12. 



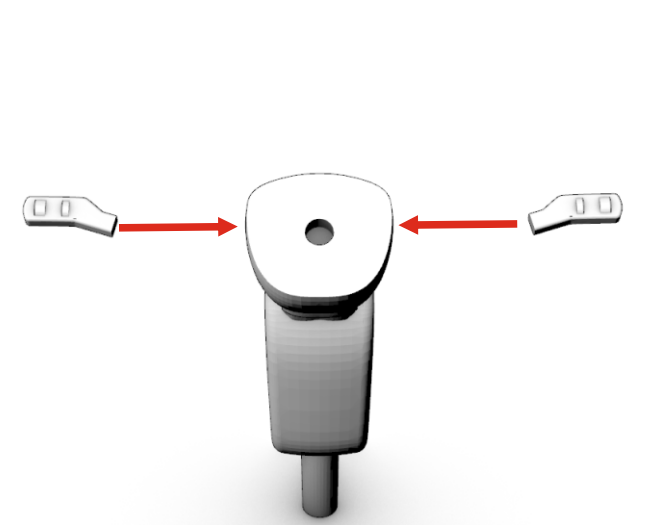
13. 



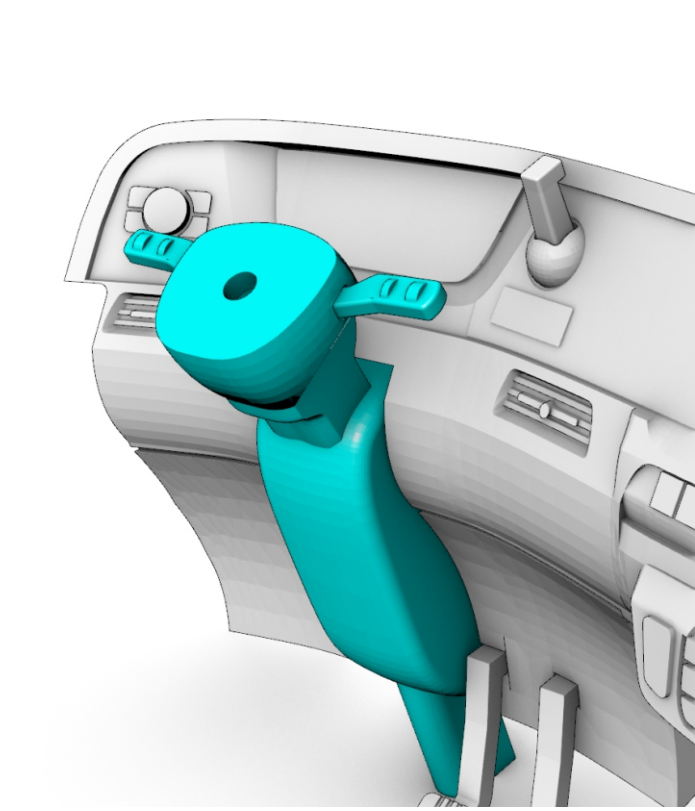
14. 




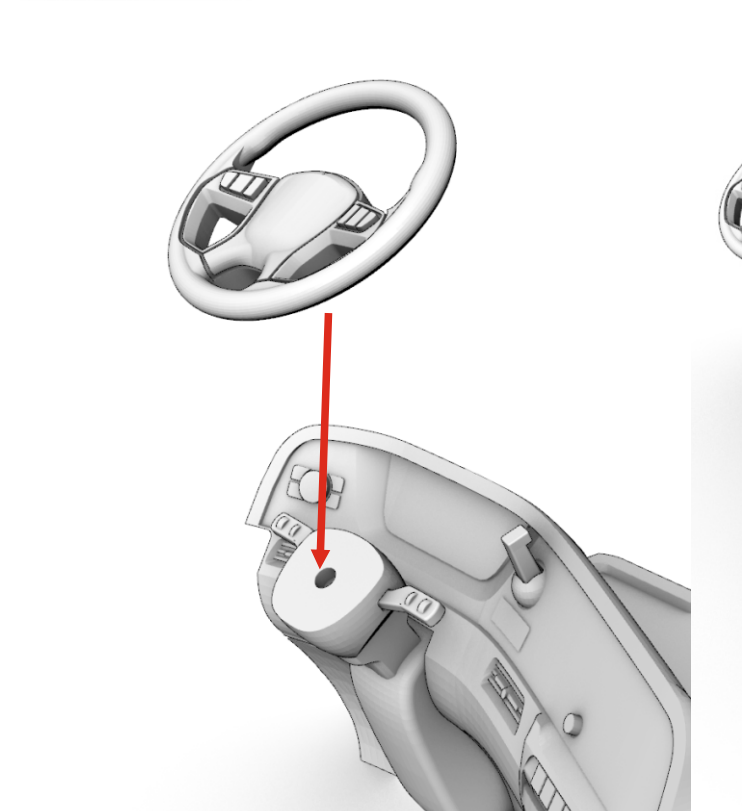
15. 



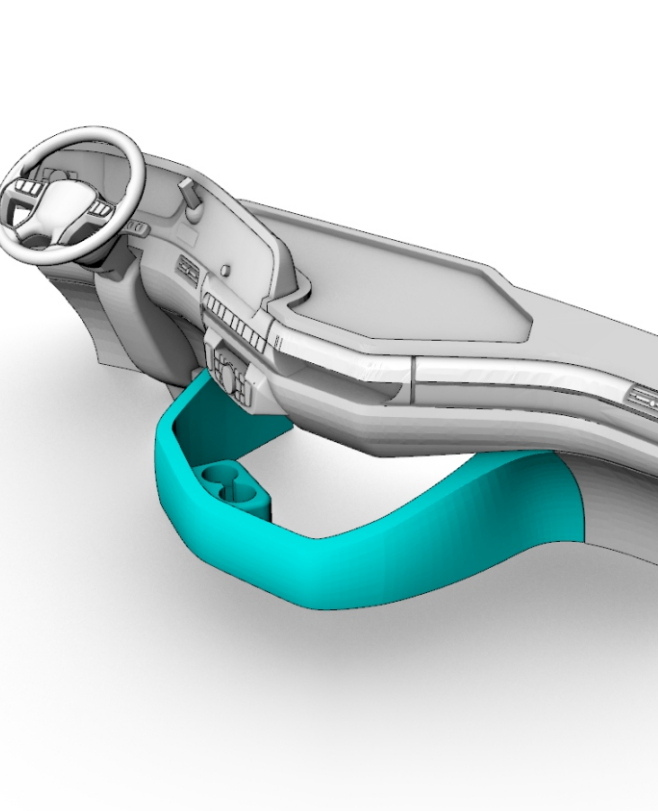
16. 




17. 

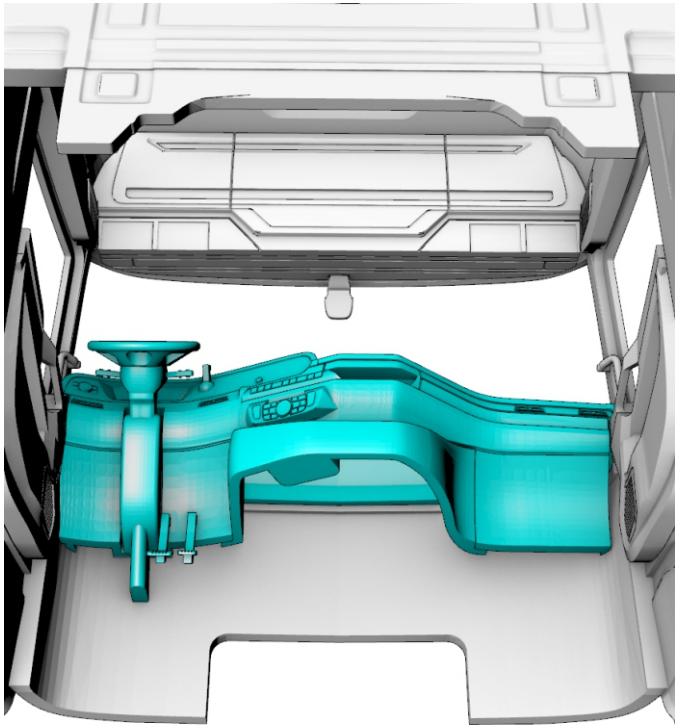



18. 

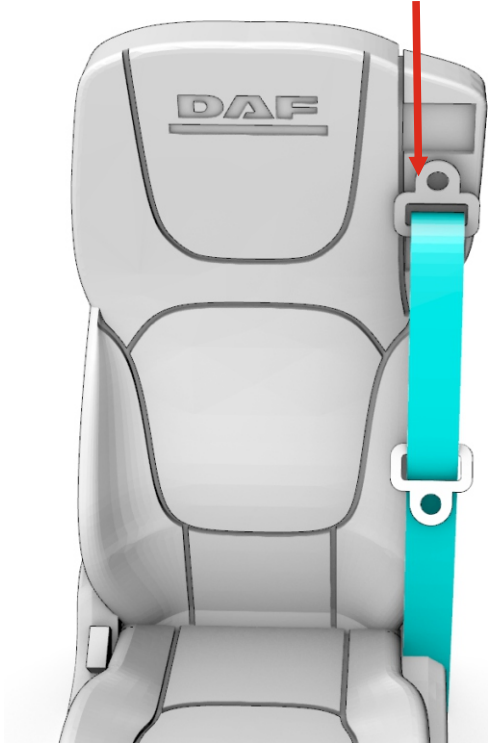




19. 



20.  x2  
PE-part #12



!




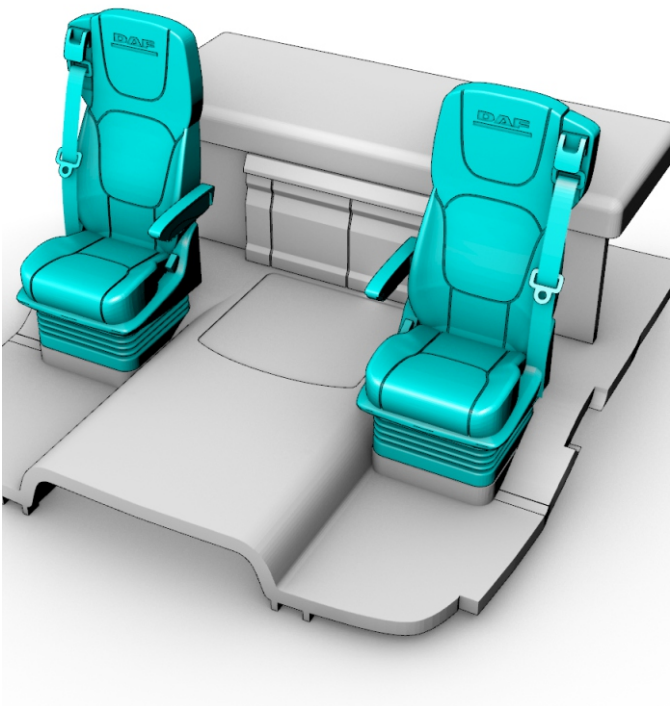
21.  x2



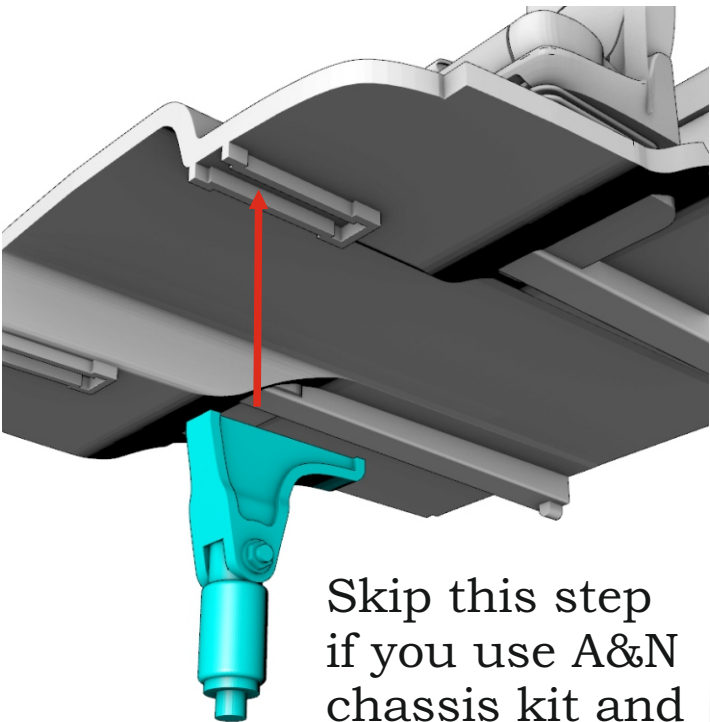
22.  x2



23. 

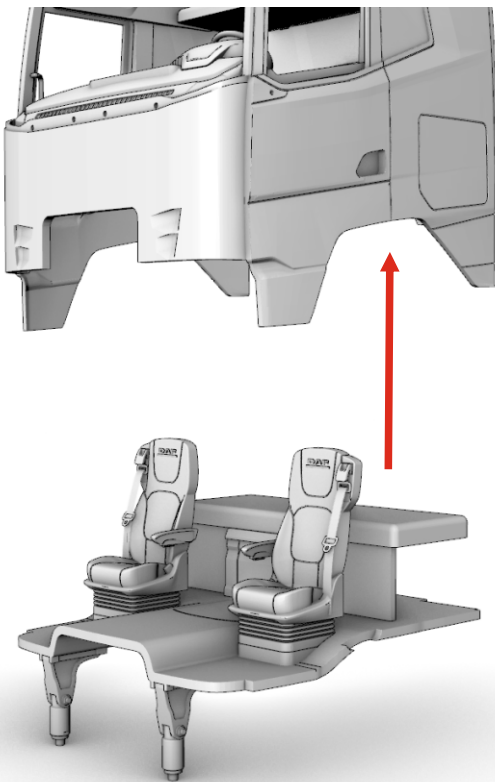


24.  x2

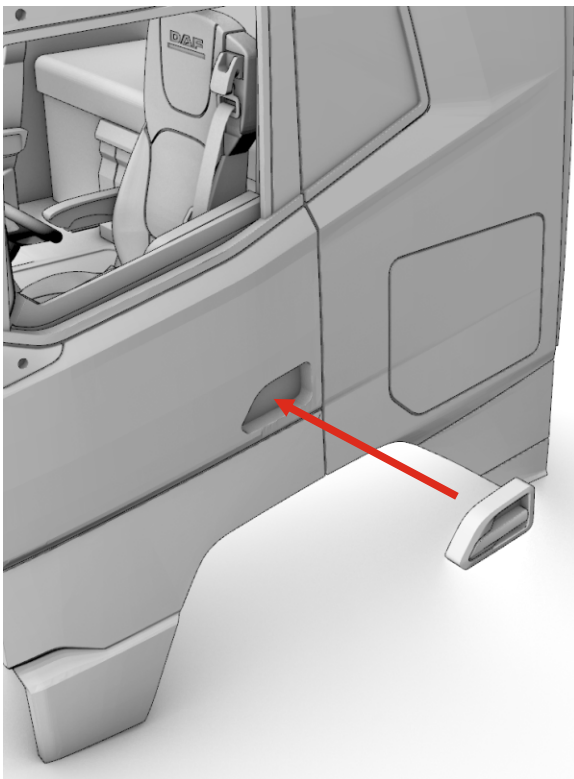


Skip this step  
if you use A&N  
chassis kit and  
plan to make  
tilting cab

25. 

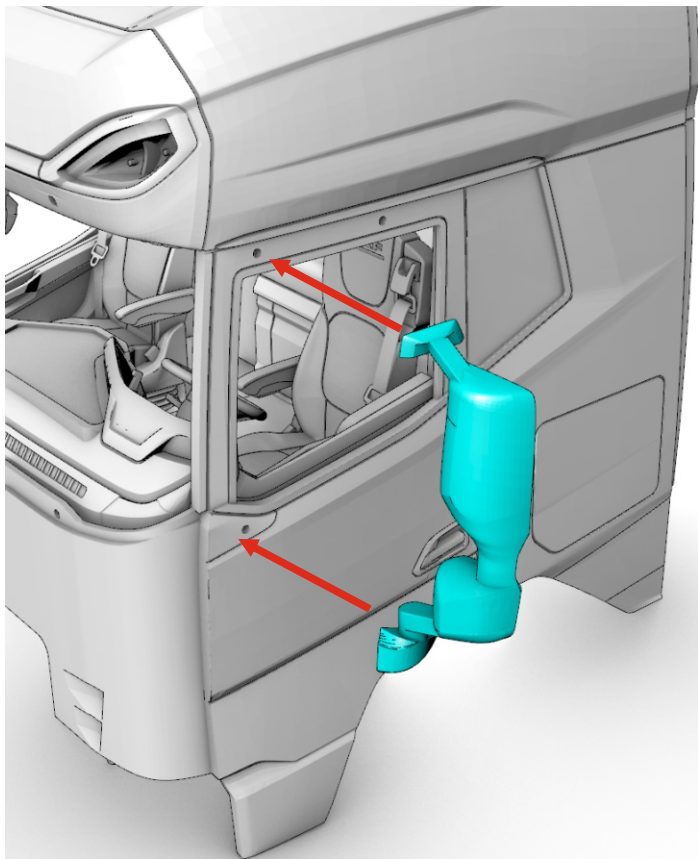


26.  x2

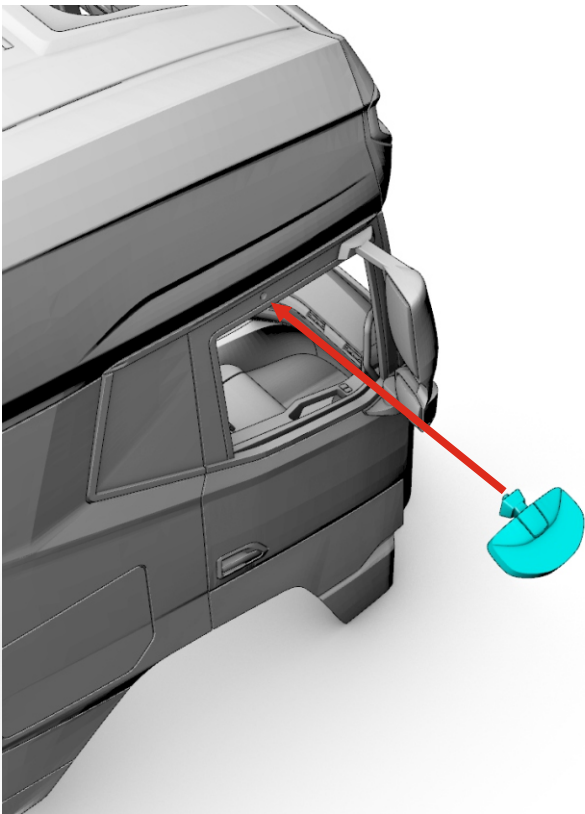




27.  x2



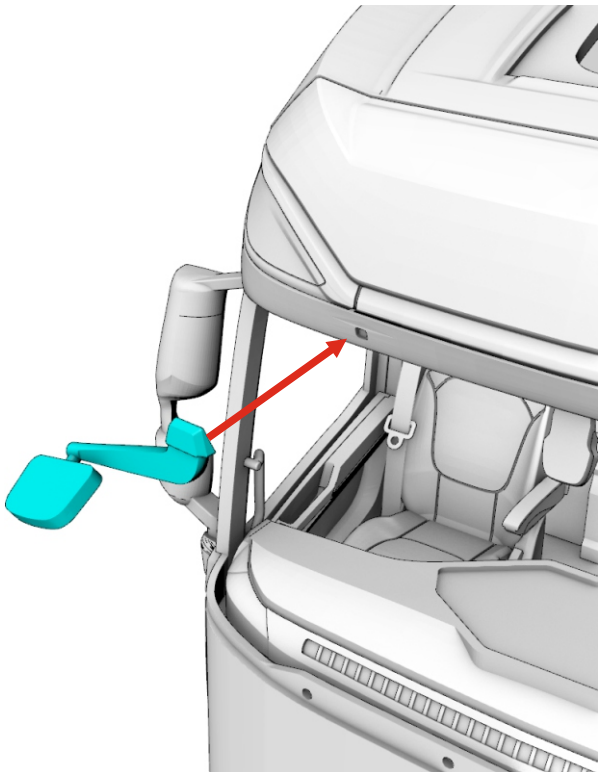
28. 



29.  x2

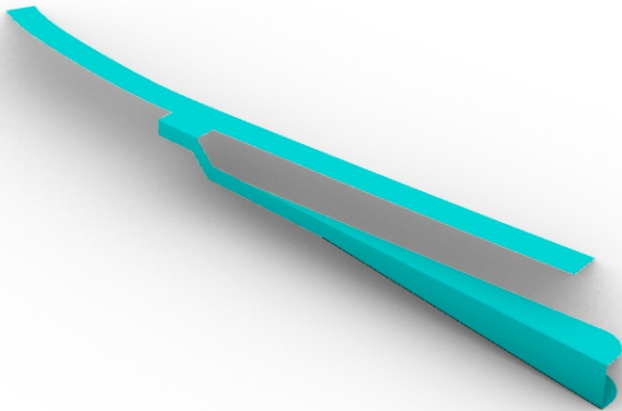


30. 

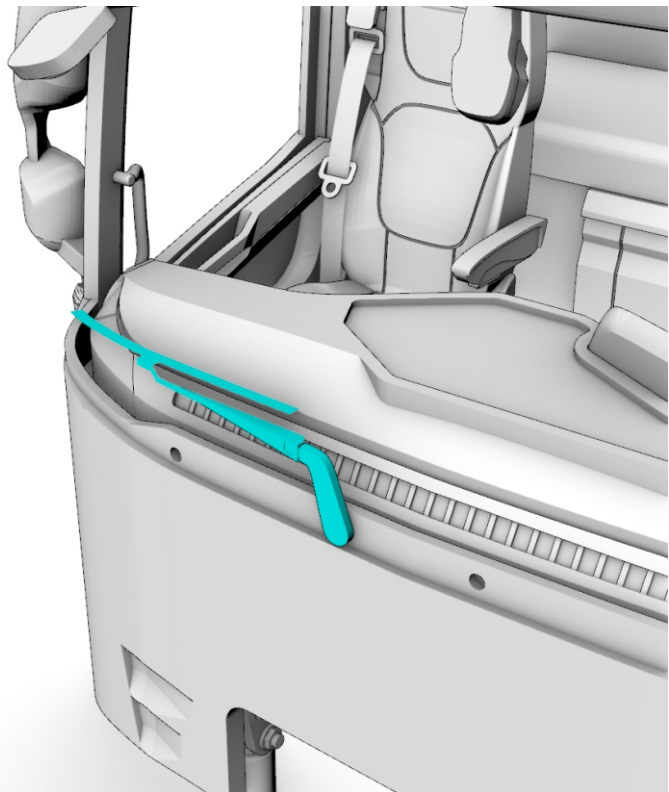


31. 

PE-part #10

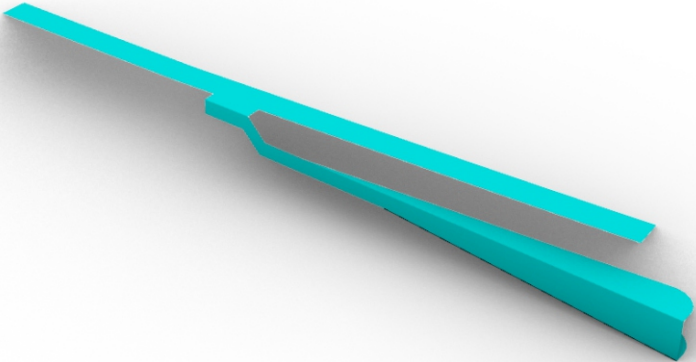


32. 

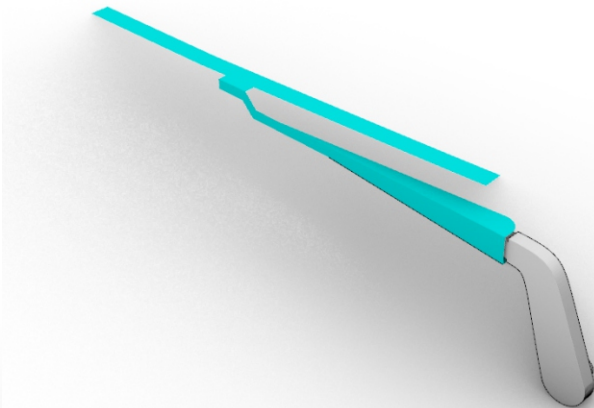


33. 

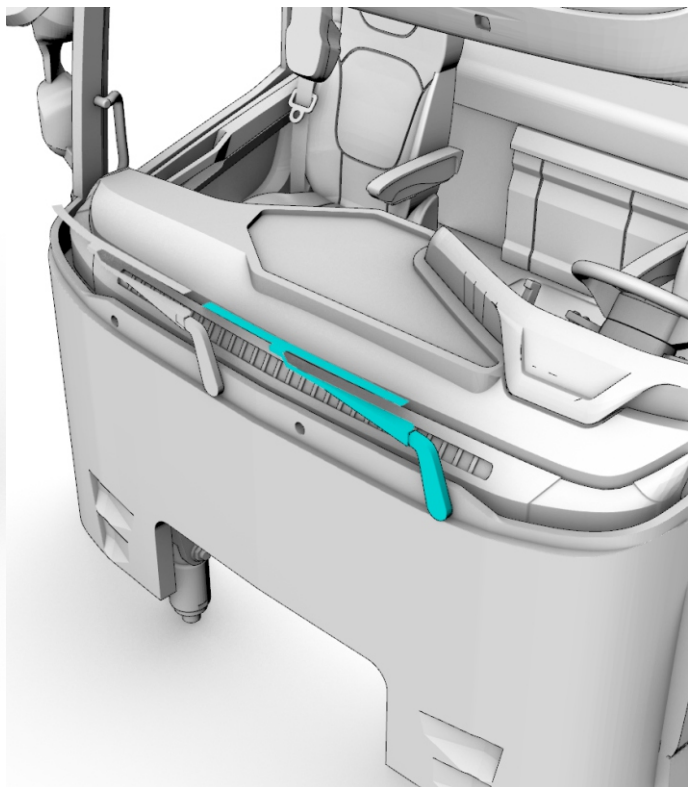
PE-part #11



34.  x2

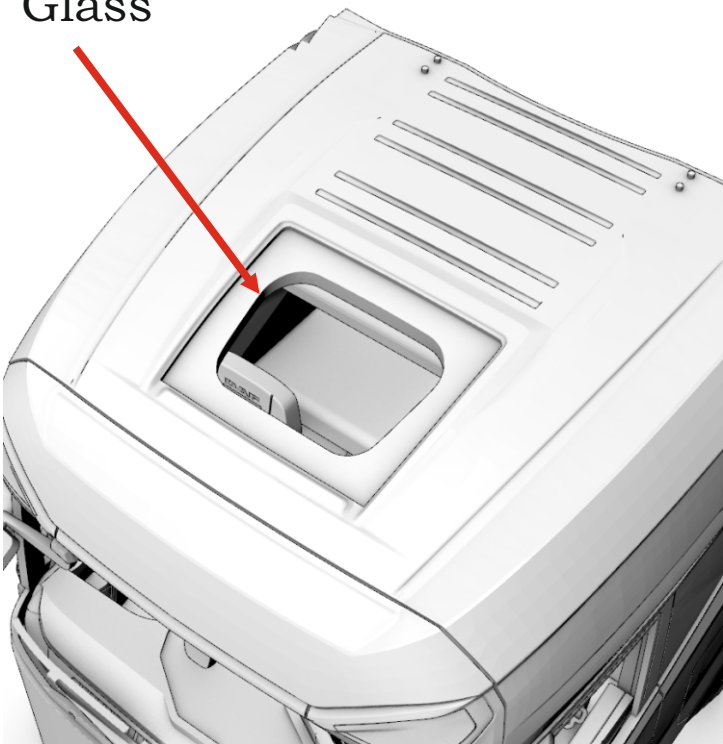


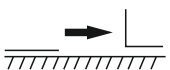
35. 

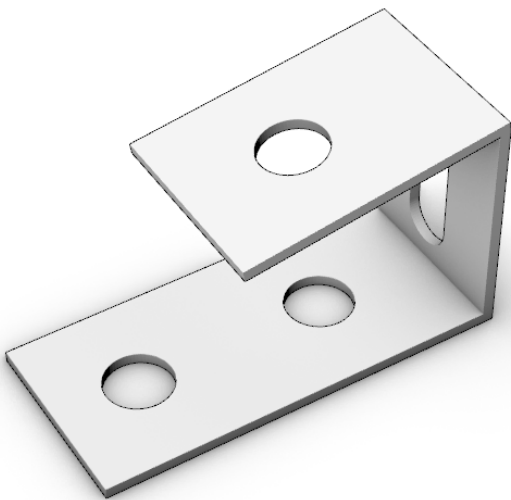




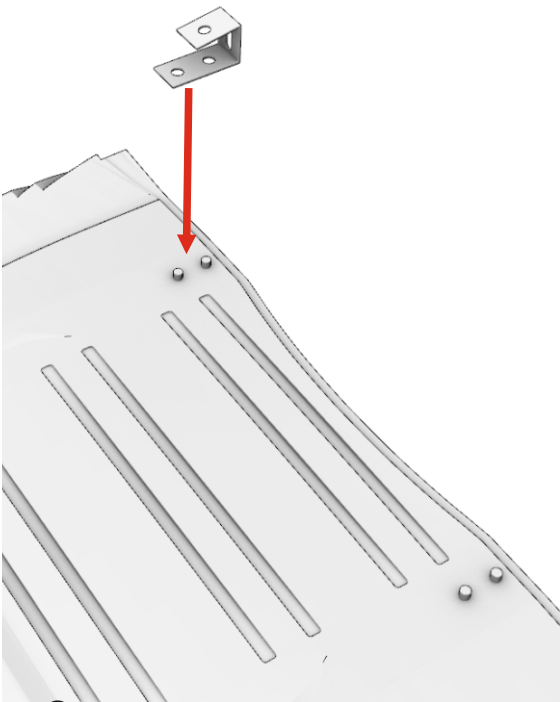
36.   
Glass




37.  x2  
PE-part #4

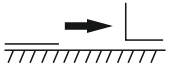


38.  x2



39.   
PE-parts #8

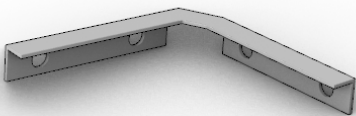


40.  x2

PE-part #2




PE-part #1

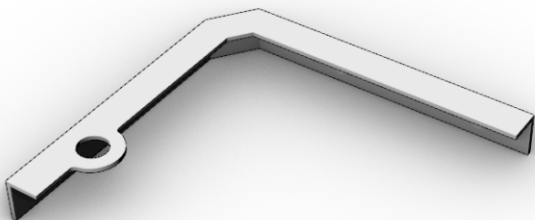


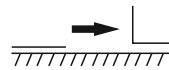
41.  x2



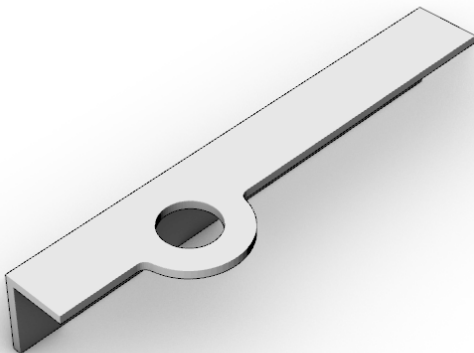
42.  x4

PE-part #5



43.  x4

PE-part #3



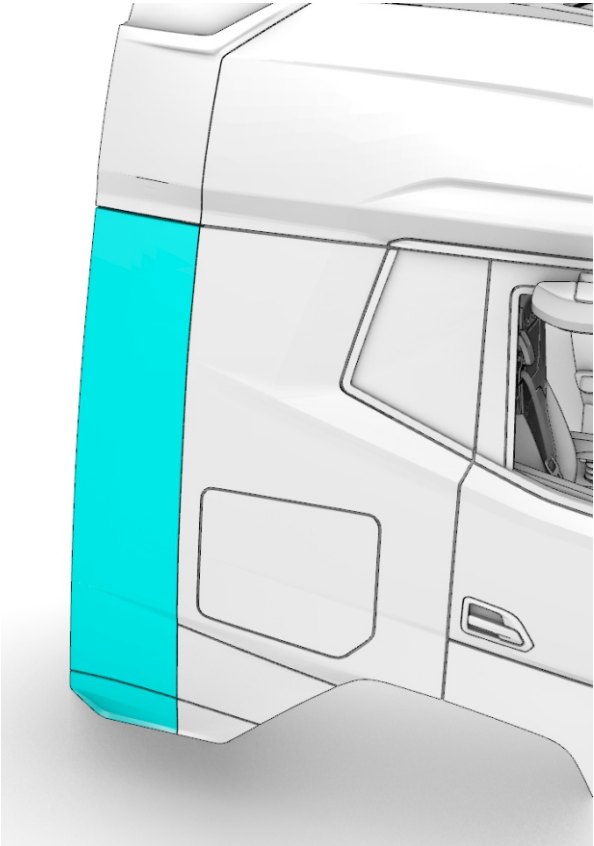
44.  x4



45.  x2



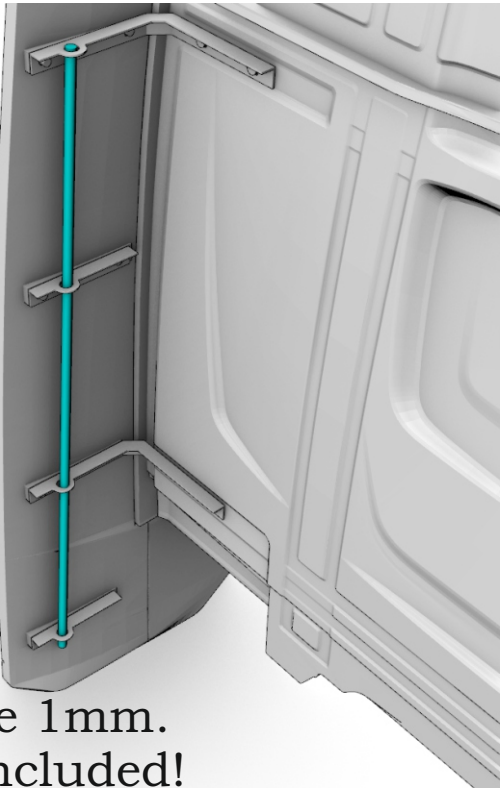
46.  x2



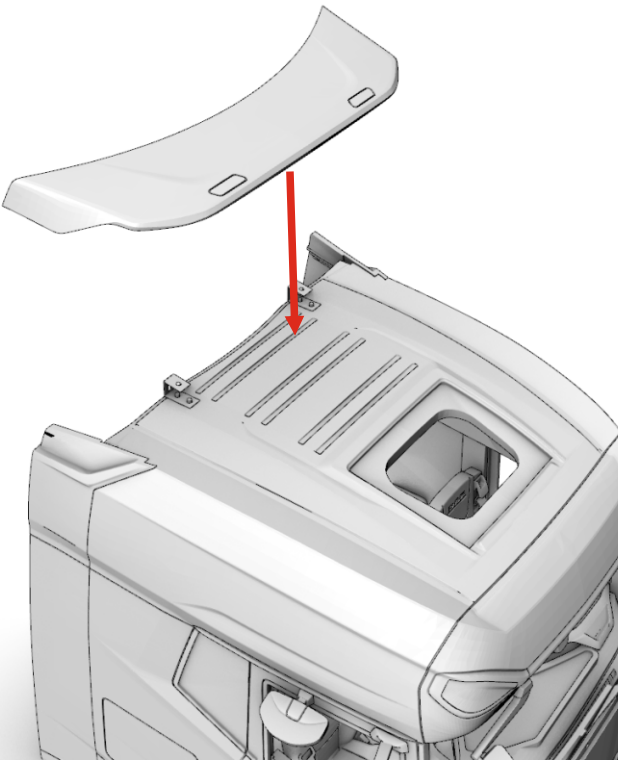
47.  x2



48.  x2

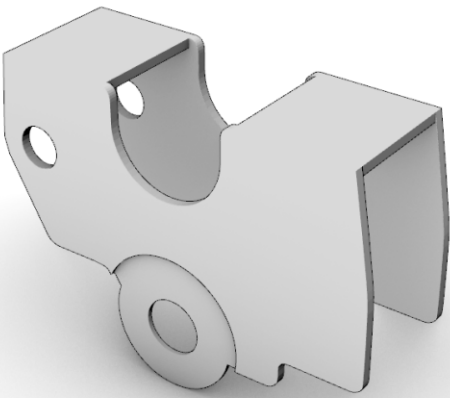


49. 



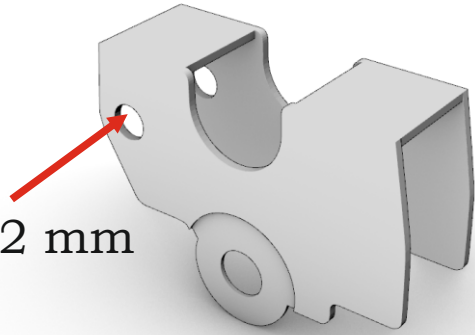
50.  x2

PE-part #6

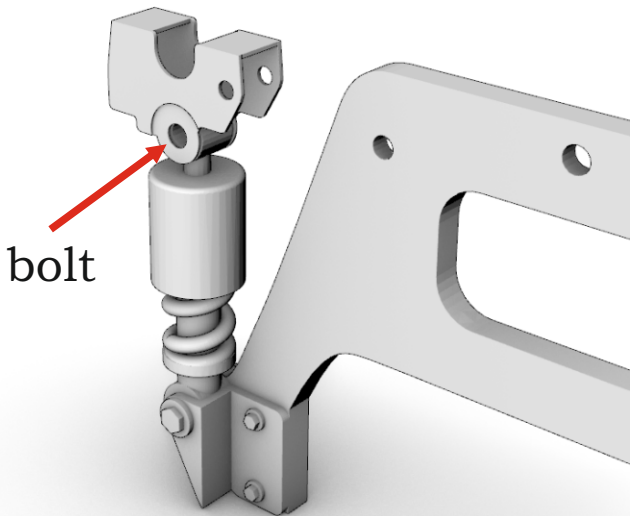


Profile 1mm.  
Not included!

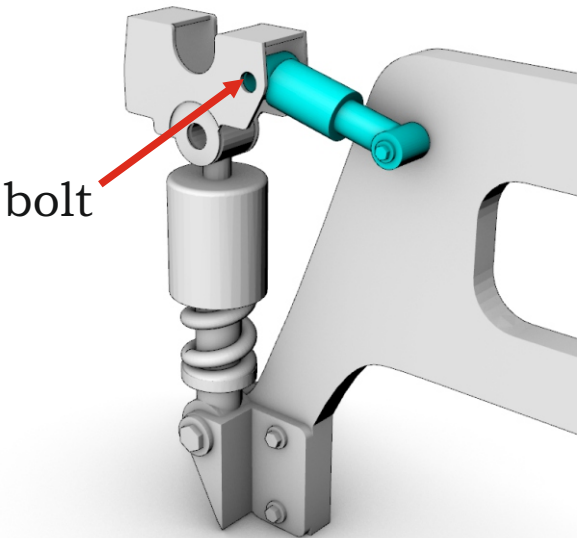
51. 



52.  x2



53.  x2

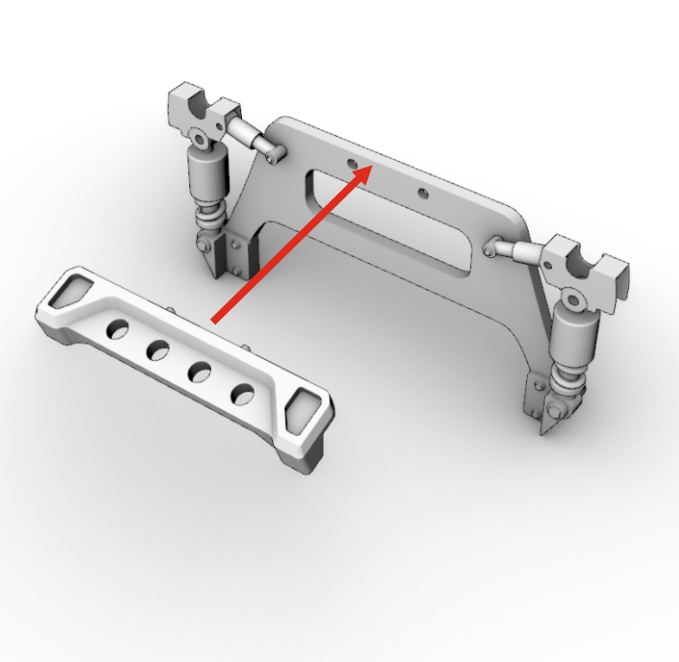


bolt

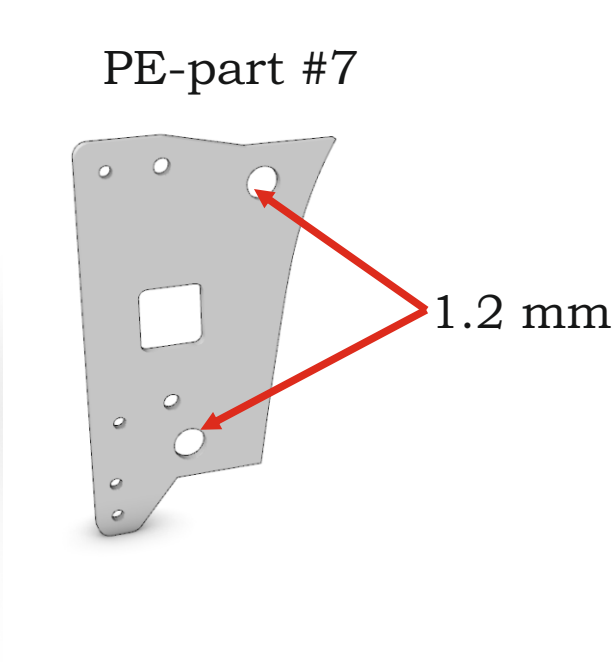


Dutch truck XG+. Scale 1/24

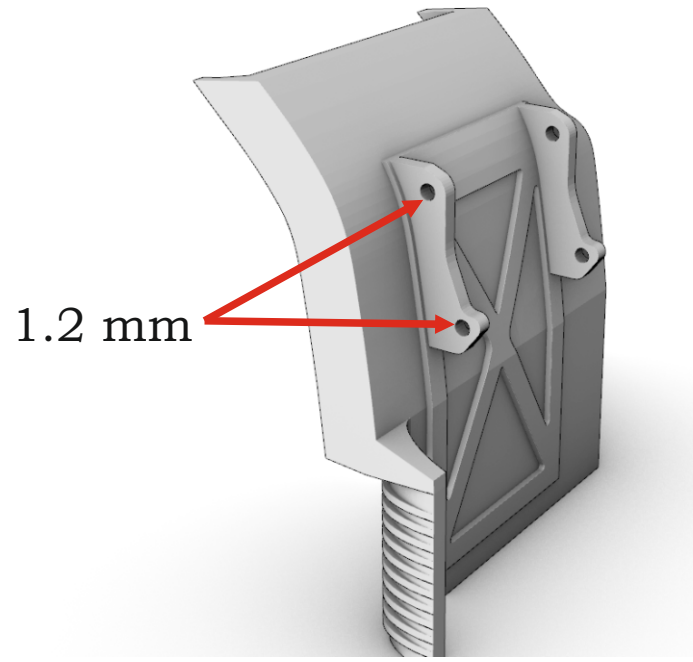
54.  x2



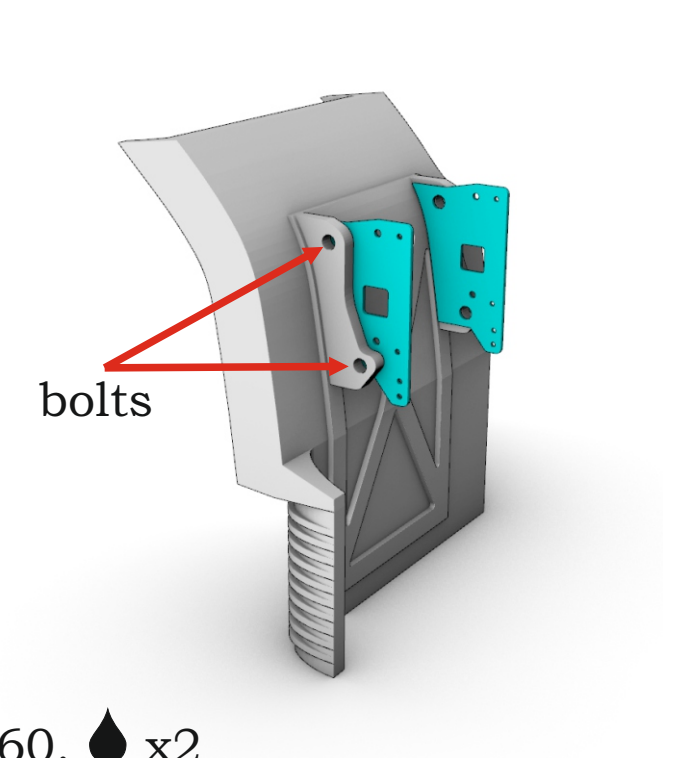
55.  x4



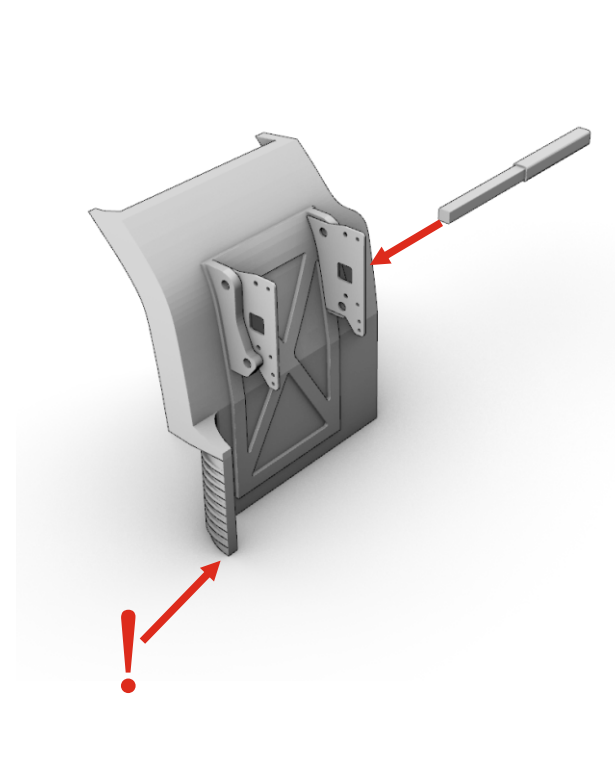
56.  x2



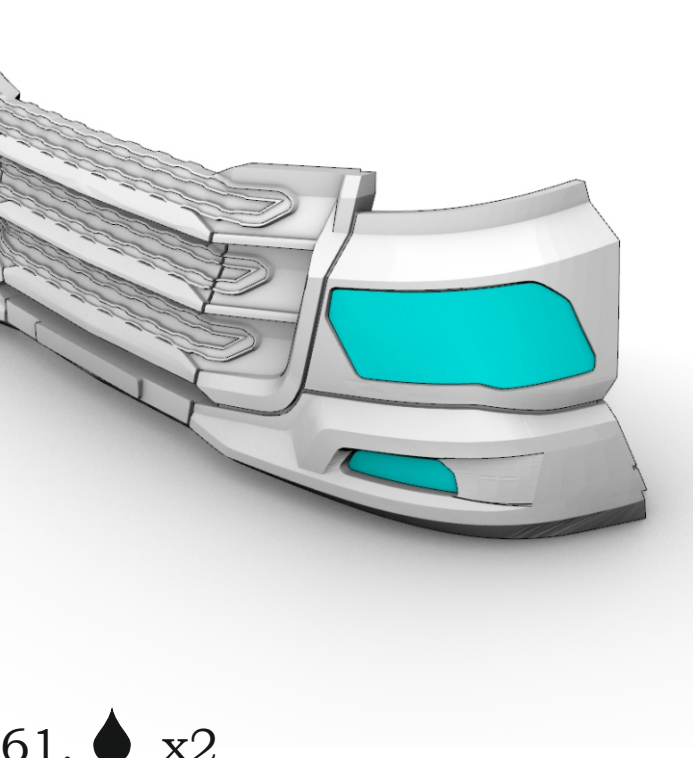
57.  x2



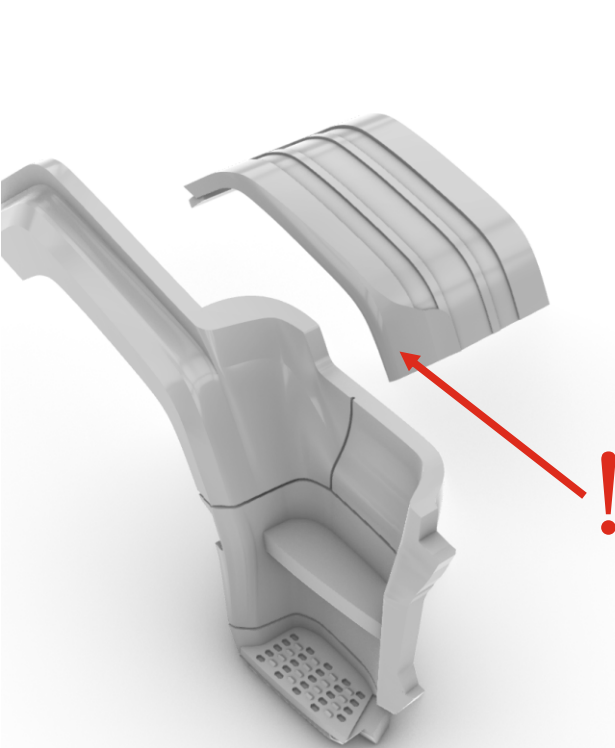
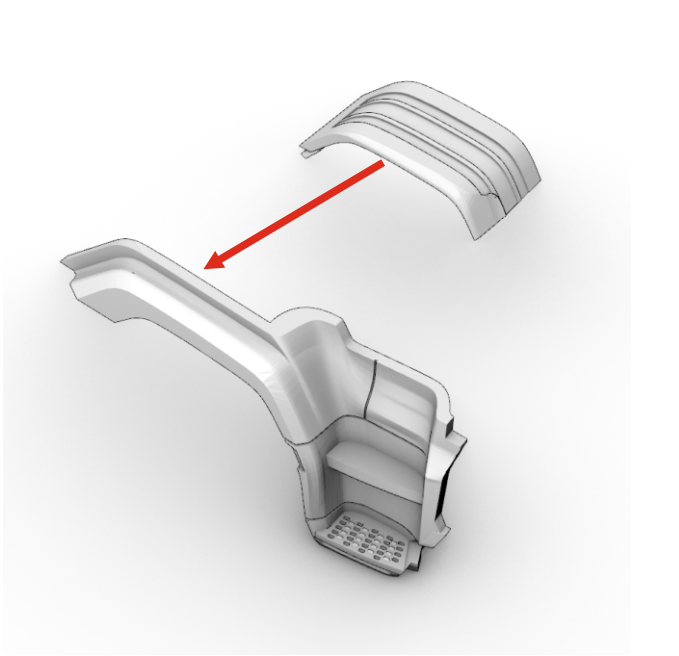
58.  x2



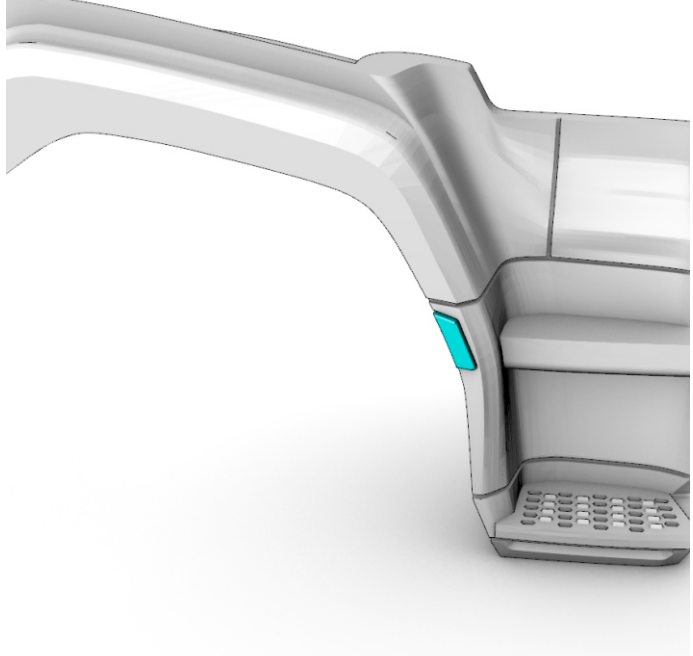
59.  x2



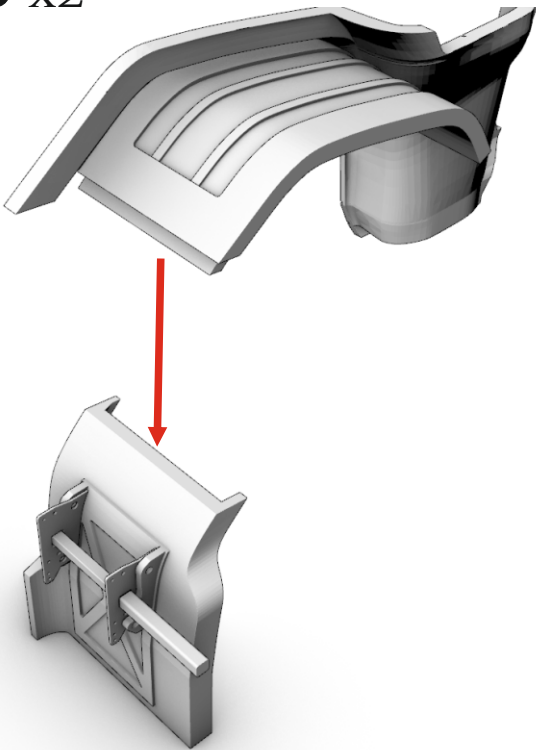
60.  x2



61.  x2



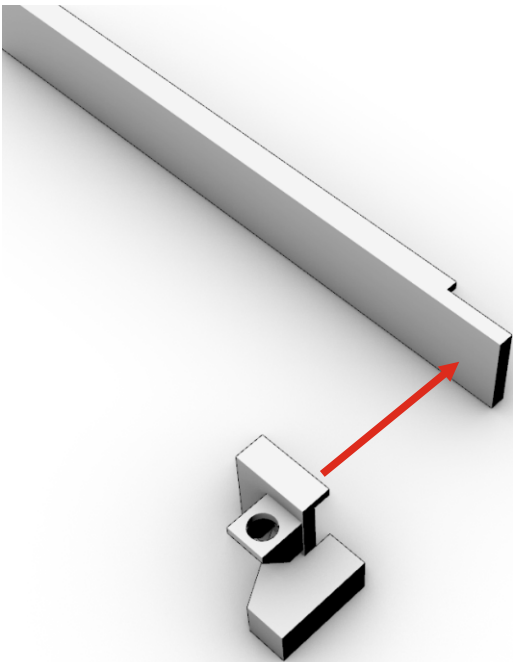
62.  x2



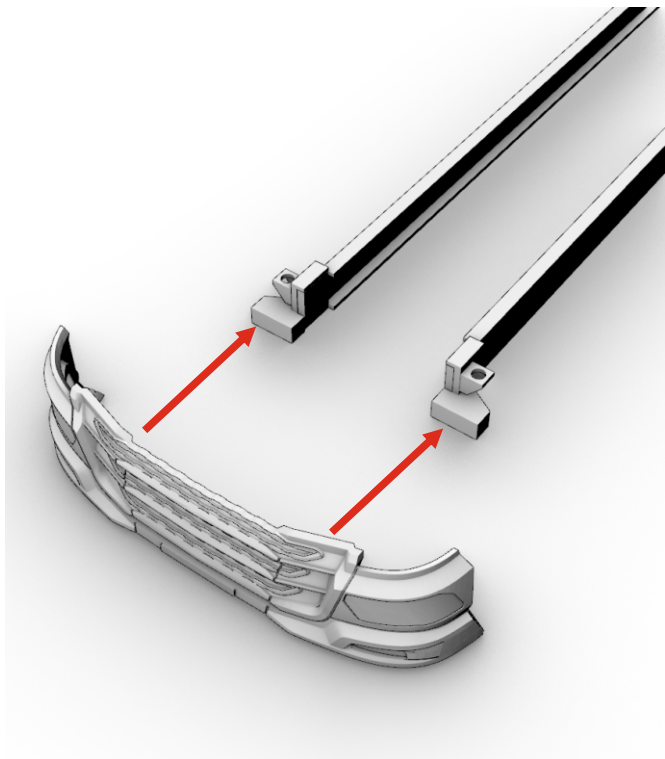
!

The following steps for Italeri donor chassis.  
If you use photo-etched chassis by A&N - refer assembling instruction for chassis.

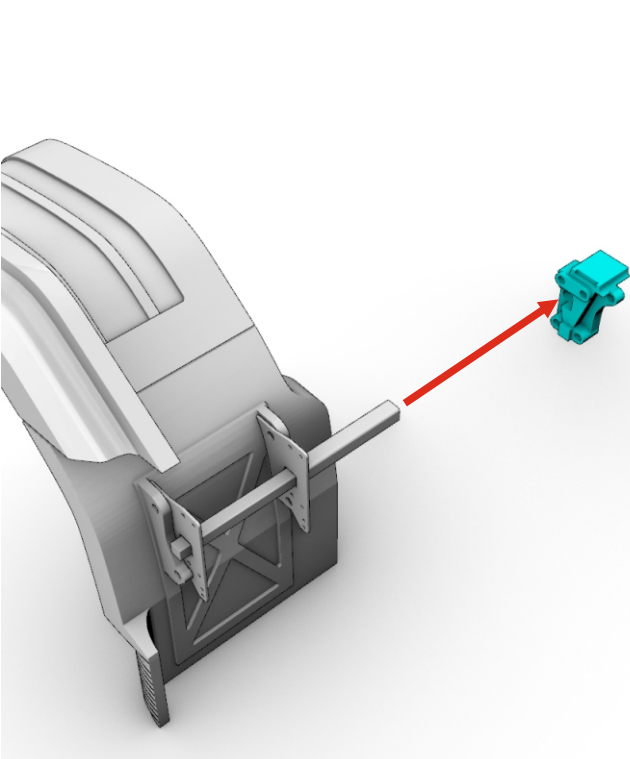
63.  x2



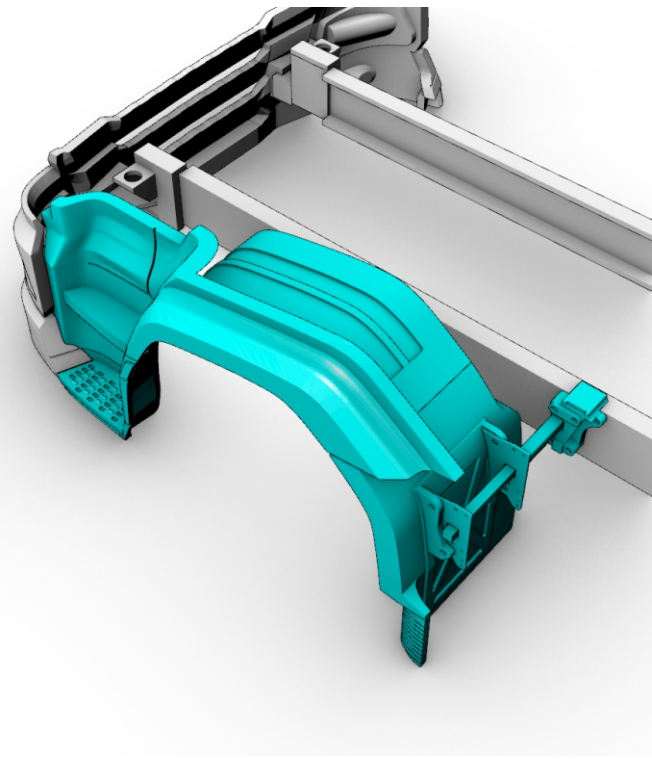
64. 



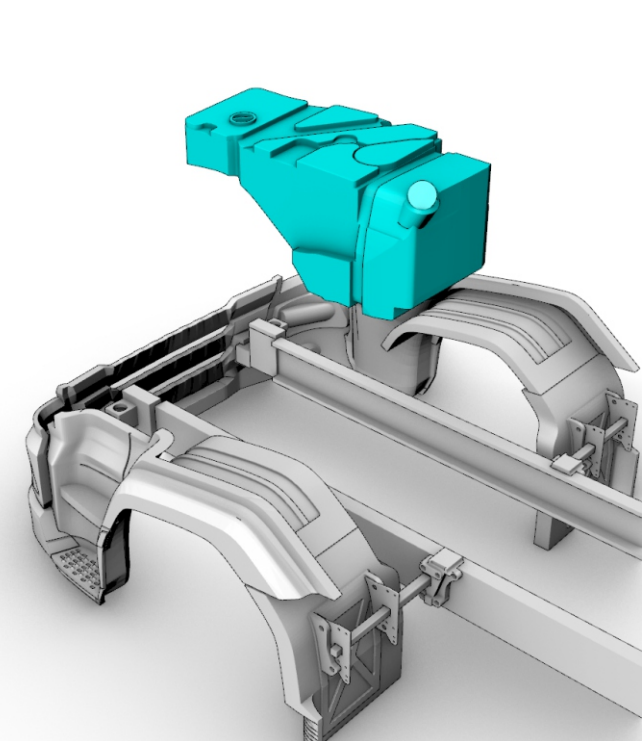
65.  x2



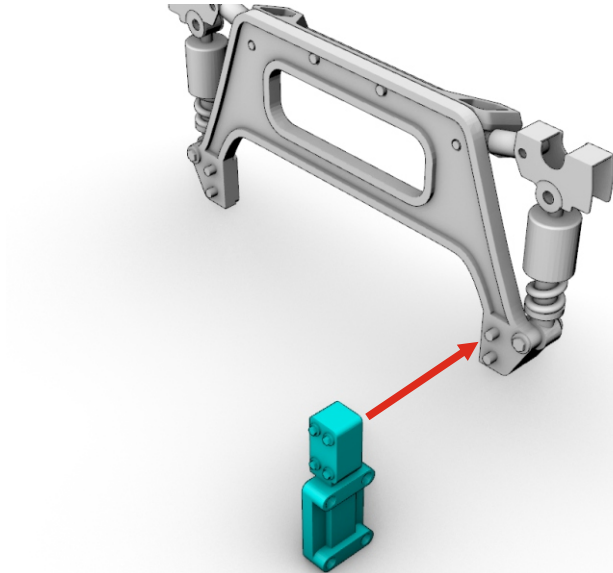
66.  x2



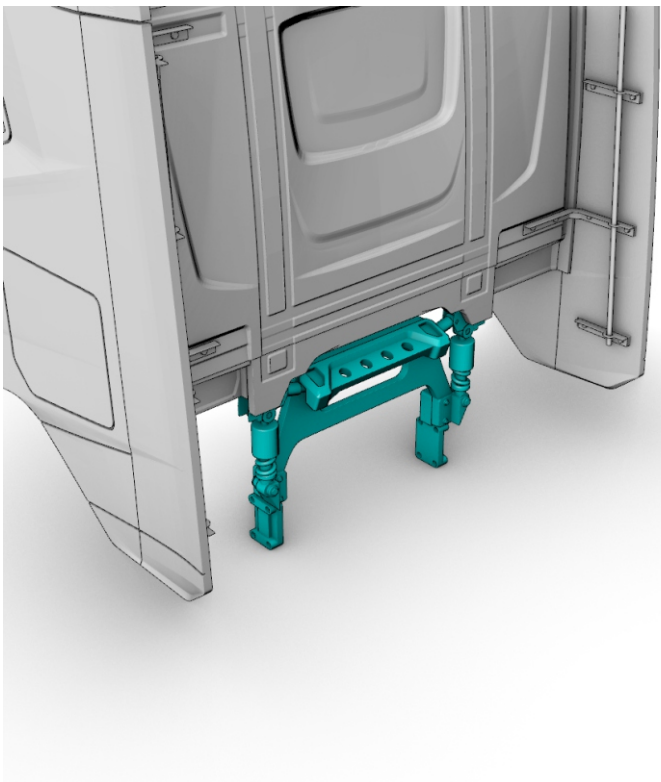
67.  x2



68. 

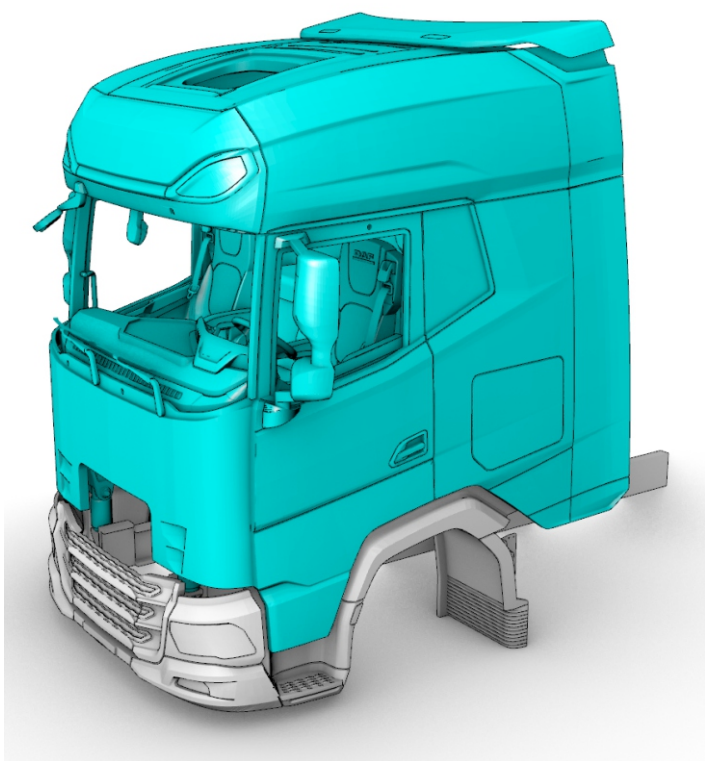


69. 

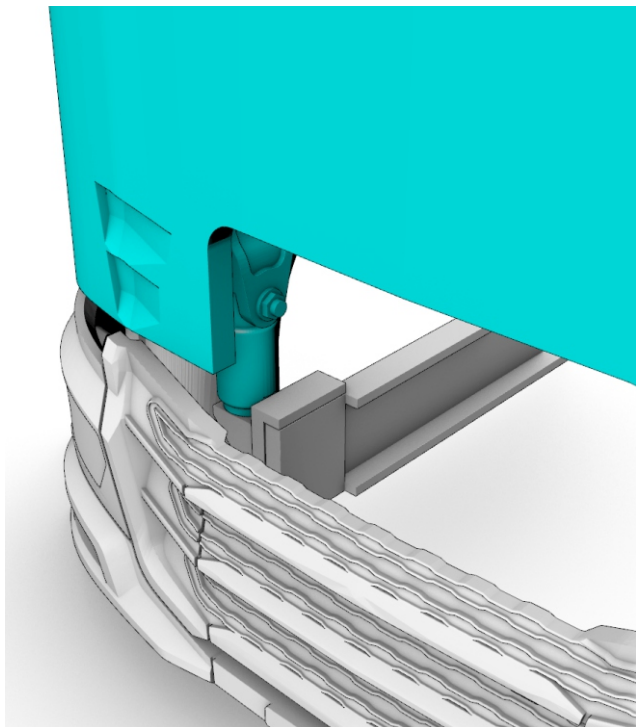




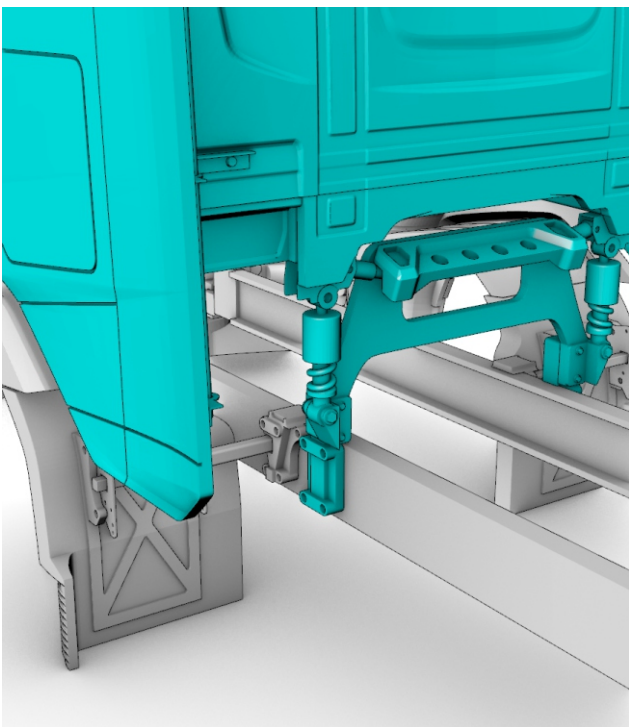
70. 



!

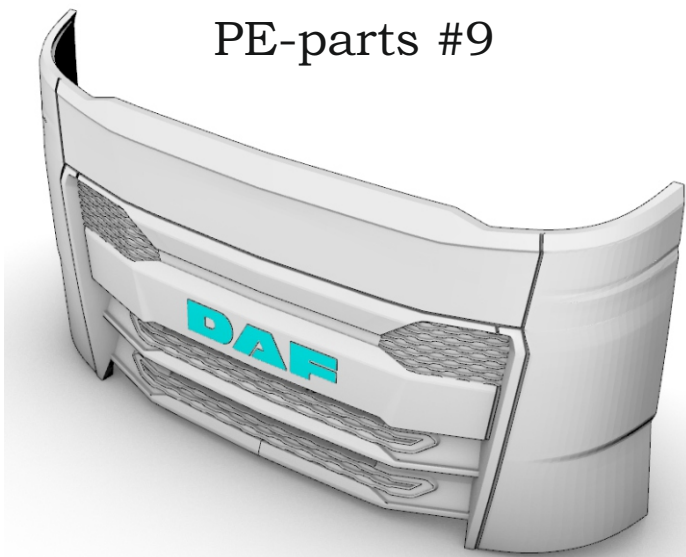


!



71. 

PE-parts #9



72. 

